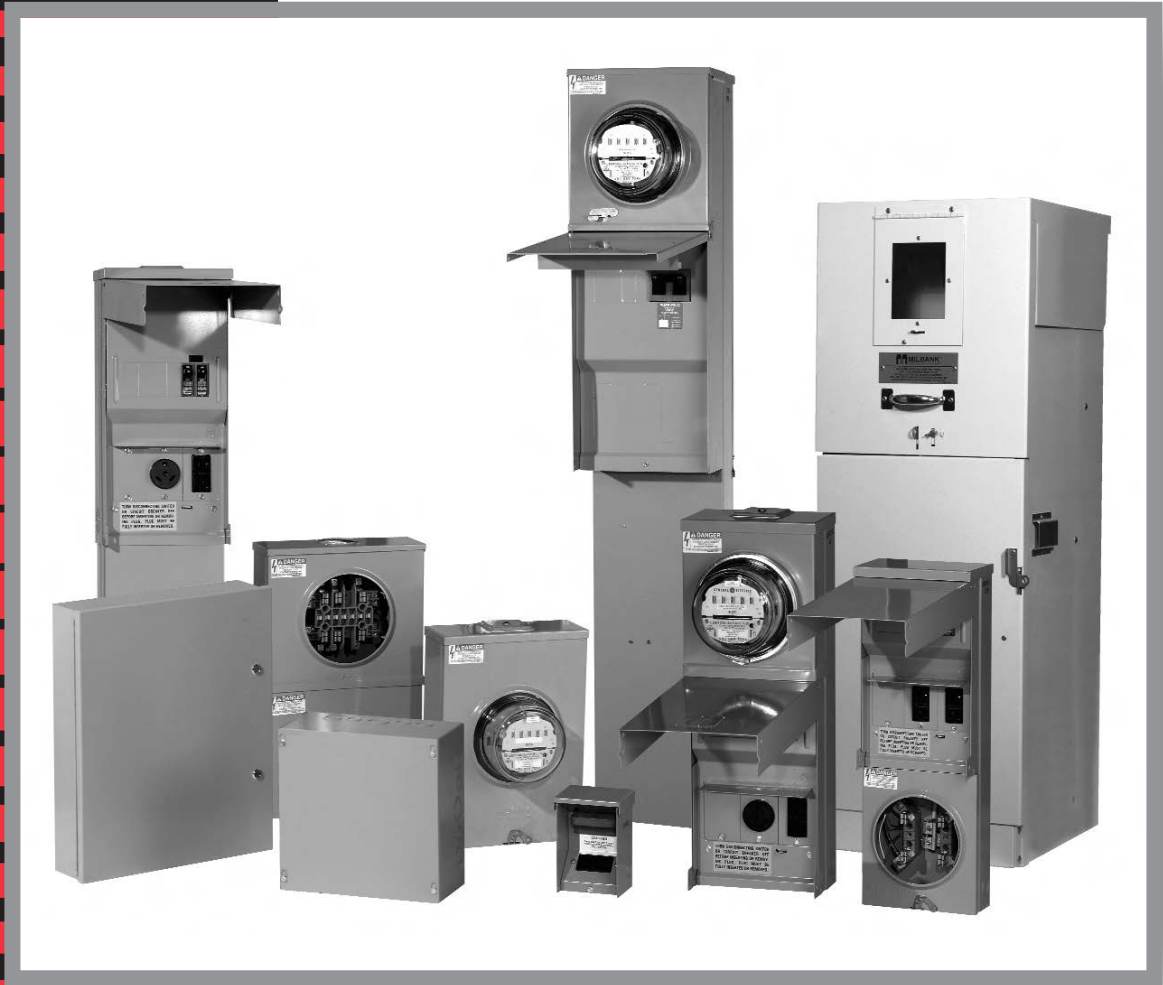


Meter Mounting Equipment

GA/AL/FL Panhandle Area



MILBANK®





Charles A. Milbank
1879-1966



Bill Martin



Robert F. Waldrop,
1922-2002



Robert F. Waldrop, II
Chairman



Katrina Waldrop Henke
Vice Chairman

Milbank—Quality Metering Products for 80 Years

Milbank Manufacturing Company was established in 1927 by Charles A. Milbank. Originally, the company manufactured high voltage switches; however, by 1941 Milbank devoted itself primarily to the manufacture of sheet metal enclosures and related equipment for the electrical generation and distribution industry. Today we are an industry leader in the manufacture of electrical meter sockets. Through a national network of manufacturer's representatives we provide wholesale electrical distributors with quality electrical products for the utility, contractor, industrial and OEM markets.

As the meter standards have changed, Milbank has been successful in adapting its product line to these changes. Our full scale engineering department designs products to meet customer specifications and satisfy all utility requirements. Milbank's employee base of over 1,000 workers, along with our

five manufacturing facilities comprising almost 550,000 square feet give us the flexibility to schedule, produce, and ship orders quickly. Currently, Milbank manufactures over 10,000 different catalog items, and this list continues to grow. Our unique product offering includes: Residential & Commercial Meter Sockets; Residential & Commercial Meter Pedestals; RV/MH Power Outlets, Service Pedestals, and Transformers; Commercial & Industrial Electrical Enclosures; Circuit Breakers; Disconnects & Safety Switches; Safety Sockets; Utility & Residential Secondary Pedestals; Hubs, and related accessories. If you don't find a unit in this catalog to service your needs, send us your specifications and we will be happy to work with you.

Our success has come from a loyal customer base that can rely on us to build quality products at a fair price in a timely manner. Our willingness and ability to design and produce new products

to meet our customer demands is an important factor to remain competitive in today's electrical market.

Milbank has been serving the electric utility & wholesale distribution industries for 80 years with innovative, quality engineered products. So remember us for all of your meter mounting and related requirements, and we will be happy to serve you as we have in the past—with dependable service and quality products!

We take great pride in being one of the few family-owned businesses left in our industry. We are a third generation run business and truly believe that...

**FAMILY MAKES A
DIFFERENCE!**



CATALOG NUMBER LOGIC	4
DISCONNECTS (30-200 AMP)	
30 & 60 AMP FUSIBLE/NON-FUSIBLE AC DISCONNECTS	5
AC DISCONNECT WITH GFCI PROTECTION/SPA BOX	6
SINGLE POSITION	
125 AMP-4 TERMINAL-RINGLESS-600 VAC	7
200 AMP-4 TERMINAL-RINGLESS-600 VAC	8
200 AMP-4 & 5 TERMINAL-RINGLESS-600 VAC	9
320 AMP CONTINUOUS-4 TERMINAL-JAW CLAMPING LEVER-RINGLESS-600 VAC	10
200 AMP-7 TERMINAL-NON JAW CLAMPING-RINGLESS-600 VAC	12
200 AMP-7 TERMINAL-JAW CLAMPING LEVER-RINGLESS-600 VAC	13
320 AMP-7 TERMINAL-JAW CLAMPING LEVER-RINGLESS-600 VAC	14
20 AMP-5, 6, 8, & 13 TERMINAL-TRANSFORMER RATED-RINGLESS-600 VAC	15
20 AMP-6, 8 & 13 TERMINAL TRANSFORMER RATED-RINGLESS-WITH TEST SWITCH PROVISION	16
480 AMP CONTINUOUS / 600 AMP MAX-4 TERMINAL-RINGLESS-1Ø3W-300 VAC	18
480 AMP CONTINUOUS / 600 AMP MAX-4 & 7 TERMINAL-HEAVY DUTY-RINGLESS-1Ø & 3Ø-600 VAC	19
480 AMP CONTINUOUS / 600 AMP MAX-7 TERMINAL-RINGLESS-3Ø4W-600 VAC	20
MULTIPLE POSITION	
200 AMP-4 TERMINAL-MULTIPLE POSITION METERING-HORIZONTAL GANGS-RINGLESS-300 VAC	22
CONDOMINIUM METERING BANKS	23
CONDOMINIUM METERING BANKS-DIMENSIONAL INFORMATION	24
METER MAINS	
200 AMP-4 TERMINAL-METER SOCKET/CB COMBO SERVICE EQUIPMENT-RINGLESS-120/240 VAC	25
100, 150 & 200 AMP-4 TERMINAL-METER MAIN-RINGLESS-120/240 VAC	26
320 AMP-4 TERMINAL-METER MAINS-RINGLESS-120/240 VAC	27
320 AMP-4 TERMINAL METER MAIN WITH BREAKERS-SIDE WIREWAY-1Ø3W-RINGLESS-240 VAC	28
COMMERCIAL PEDESTALS	
COMMERCIAL METER PEDESTALS OVERVIEW	29
APPLICATIONS & ACCESSORIES	30
COMMERCIAL PEDESTALS WORKSHEET	31
METERED PEDESTALS	
U5168 & U5268 RINGLESS METERED PEDESTALS	32
U5136, U5137 & U5139-RINGLESS-METERED PEDESTALS	34
POWER OUTLETS	
U4908 & U4909 UNDERGROUND SERVICE POWER OUTLET-RINGLESS/RING TYPE	36
SERIES U5000-UNMETERED-SURFACE MOUNT POWER OUTLET	38
SERIES U5100-METERED-SURFACE MOUNT POWER OUTLET	40
SERIES U5200-UNMETERED-PEDESTAL POWER OUTLET	42
SERIES U5300-METERED-PEDESTAL POWER OUTLET	44
MISCELLANEOUS	
TEST SWITCHES	17
LUG CONNECTORS	21
UQFP PLUG-IN SERIES CIRCUIT BREAKERS	46
UQFB BOLT-ON SERIES CIRCUIT BREAKERS	47
ACCESSORIES	48
CONDUIT & AMPACITY INFORMATION	50
ENERGIZATION OF ELECTRICAL EQUIPMENT	51
MATERIALS AND FINISHES	52
METER FORMS	53
WATTHOUR METER FORMS-STANDARD FORMS-TRANSFORMER RATED OR SELF-CONTAINED	54
PAGE INDEX BY SKU	55
UTILITY INDEX BY SKU	56
ADDITIONAL MILBANK PRODUCTS	58

Catalog Number Logic

U = UL Listed

S = Non-UL Listed

UAP = UL / Alum / Painted

**Milbank
Drawing
Number**

TG = Triplex Ground

QG = Quadplex Ground

**KK = Horn By-Pass
Provision**

**Specific Utility
Designation**

Barrel Lock

U7040-RL-TG-KK-5T9-BL-AUT

HUB OPENINGS / CLOSING PLATES

O	Plain Top	WL	1"	For -RL Opening
RL	Small Hub Opening	YL	1¼"	For -RL Opening
R	Large Hub Opening	ZL	1½"	For -RL Opening
XL	Small Closing Plate	DL	2"	For -RL Opening
X	Large Closing Plate	EL	2½"	For -RL Opening
RXL	Large Hub Opening adapted to small Closing Plate.	F	3"	For -R Opening
		G	3½"	For -R Opening
RRL	Large Hub Opening adapted to small Hub Opening	H	4"	For -R Opening

Fifth Terminal Designation

- **5T6 installed at 6:00**
- **5T9 installed at 9:00**

Barrel Lock / Guard Provision

U2448-X-QG-5T9-K3-BLG-ARE

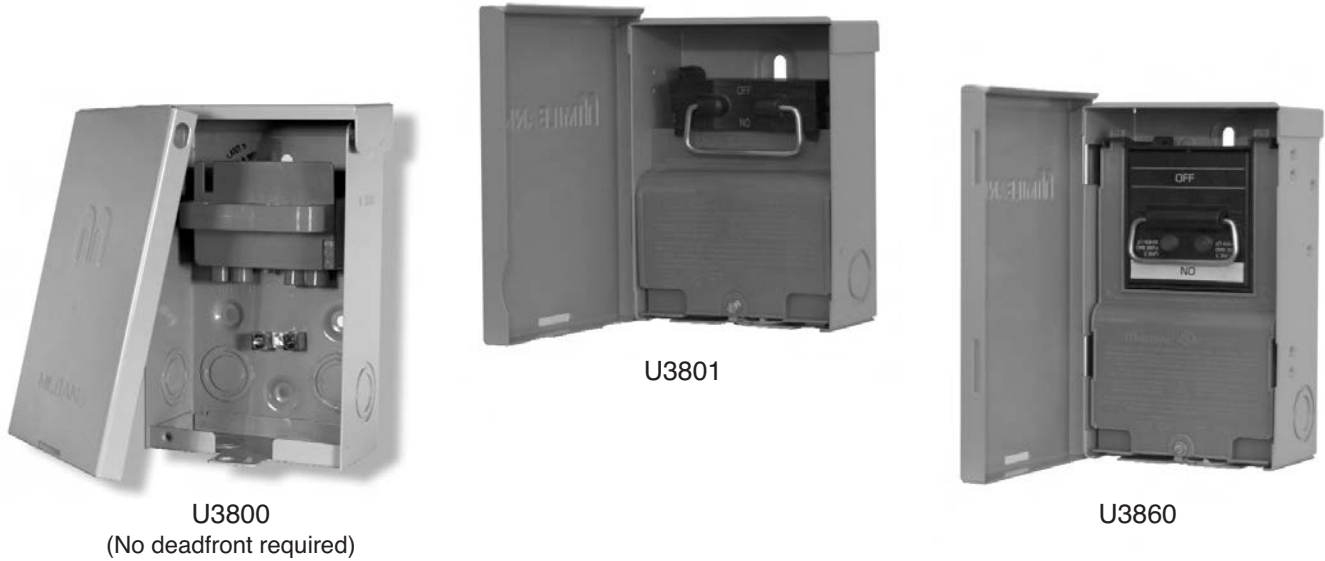
**Milbank
Drawing
Number**

TG = Triplex Ground
QG = Quadplex Ground

Specific Utility Designation

Lugs [1Ø or 3Ø – 350 or 600 kcmil]

- **Single [K1, K3, K5, K7]**
- **Twin [K2, K4, K6, K8]**



PROFILE

Milbank's air conditioner disconnect has a removable hinged cover which makes wiring a breeze. Our compact design meets all wire bending space requirements in the NEC and, also, complies with article 440-14 in the NEC. To insure the safest conditions, we designed our disconnect pullers to be removable or they may be reinstalled in the off position. Another safety feature is the padlock provision on the front cover. As with all Milbank products, our enclosure is constructed of G90U galvanized steel and finished with an attractive, light gray, baked powder coating. Our state of the art finish combines epoxy and polyester hybrid resins into a hybrid powder coating which is then electrostatically applied. This offers a durable, nonfading finish.

TECHNICAL INFORMATION

AMP	TYPE	CATALOG NUMBER	MAX H.P.	WT. @ #	LINE & LOAD WIRE RANGE		GROUND WIRE RANGE	DIMENSIONS			WIRE RATING	
					CU	AL	CU/AL	D"	W"	H"	CU °C	AL °C
30	FUSIBLE	U3830	3	2.7	#14-#3 AWG	#14-#3 AWG	#14-3 AWG	2-5/8	5	7	60°/75°	60°/75°
60	FUSIBLE	U3860	10	3.3	#14-#3 AWG	#14-#3 AWG	#14-3 AWG	3	5	9 1/4	60°/75°	60°/75°
60	NONFUSIBLE	U3800	10	3.25	#14-#2 AWG	#12-#2 AWG	#14-3 AWG	3	5	8	60°/75°	60°/75°
60	NONFUSIBLE	U3801	10	2.5	#14-#3 AWG	#14-#3 AWG	#14-3 AWG	2-3/8	5	6-3/4	60°/75°	60°/75°

✓ U/L listed as Enclosed Pullout Switch

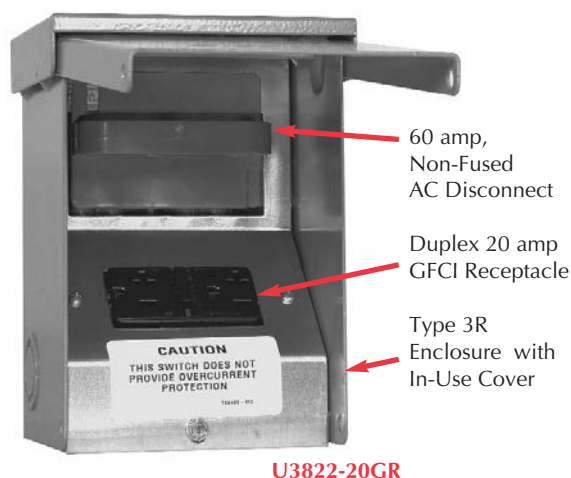
✓ 1Ø, 240 VAC

✓ Type 3R Rainproof

✓ Six one-inch concentric knockouts

Utility requirements for this equipment may vary. Always consult the serving utility for their requirements before ordering or installing equipment in this catalog.

Combination AC Disconnect / 20 Amp GFCI Receptacle—Together in 1 Box



- Meets NEC # 210.63 Requirements *
- UL Listed as Power Outlet
- Type 3R Enclosure
- In-Use Cover**
- Duplex Ground Connector
- 1" Concentric Knockouts

AC DISCONNECT

- 1Ø, 240 Volt
- 60 amp, Non-Fused

GFCI RECEPTACLE

- 20 amp
- Reset/Test Button
- Padlock provision

* NEC® #210.63 Heating, Air-Conditioning and Refrigeration Equipment Outlet.

...The receptacle shall be located on the same level and within 7.5 m (25 ft.) of the heating, air-conditioning and refrigeration equipment.

* NEC® #210.08 Ground-Fault Circuit- Interruptor protection for personnel.

AMP	TYPE	CATALOG NUMBER	MAX H.P.	WT. #	LINE & LOAD CONNECTOR WIRE RANGE		GROUND CONNECTOR WIRE RANGE	DIMENSIONS			WIRE RATING	
					CU	AL	CU/AL	D"	W"	H"	CU °C	AL °C
60	NONFUSIBLE	U3822-20GR	10	6	#14-#2 AWG	#12-#2 AWG	#14-4 AWG	4.8	5.25	7.4	60°/75°	60°/75°

To ensure the safest conditions, Milbank disconnect pullers are designed to be reversible so they may be reinstalled in the OFF position. All units are designed with a padlock provision on the cover for security.

****Note:** U3822-20GR cover rated as *IN-USE COVER* (Cover may be closed with cords plugged into receptacle).

*Reprinted with permission from NFPA 70-2002, *National Electrical Code*®, Copyright 2001, National Fire Protection Association, Quincy, MA 02269. This reprinted material is not the complete and official position of the NFPA on the referenced subject, which is represented only by the standard in its entirety. National Electrical Code® and NEC® are registered trademarks of the National Fire Protection Association, Quincy, MA.

Hot Tub Disconnect or Sub Panel Breaker Enclosure—Type 3R

Spa Box with GFCI Protection



U4881-O-50GB

- 240 volt ground fault protection
- UL listed, Type 3R rainproof
- Milbank reliability
- Easy installation
- 2 pole, 50 or 60 amp GFCI breaker protection
- Compact size:
8-1/2" H x 7-1/2" W x 3-3/4" D
- 3 or 4 wire installation
- 1Ø, 120 / 240 VAC
- Standard package of 12
- 2 extra one-pole breaker spaces
- 100 amp overall rating

Sub Panel Breaker Enclosure

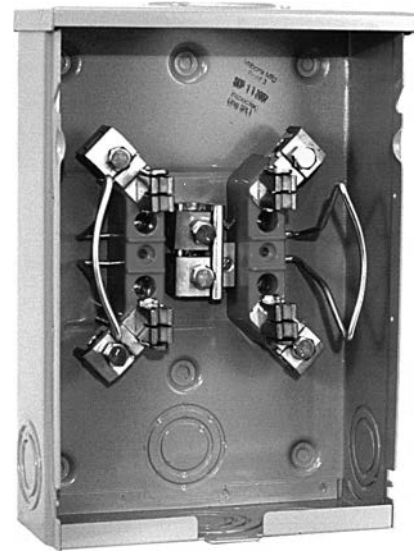
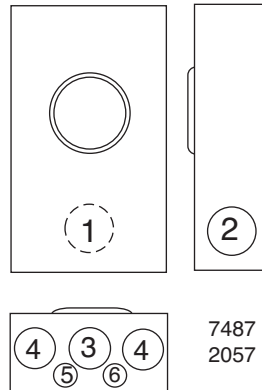
- Use as a 100 amp, 4 circuit sub panel enclosure
- U4881-O has provision for (2) 2-pole or (4) 1-pole small frame breakers



AMP	TYPE	CATALOG NUMBER	WT. #	LINE & LOAD CONNECTOR WIRE RANGE		GROUND CONNECTOR WIRE RANGE	DIMENSIONS		
				CU	AL	CU/AL	D"	W"	H"
—	BREAKER PROVISION	U4881-O	7	#14-1/0	#14-1/0	#14-1/0	3 3/4	7 1/2	8 1/2
50	BREAKER	U4881-O-50GB	8	#14-1/0	#14-1/0	#14-1/0	3 3/4	7 1/2	8 1/2
60	BREAKER	U4881-O-60GB	8	#14-1/0	#14-1/0	#14-1/0	3 3/4	7 1/2	8 1/2



U7487-RL-TG



UAP2057-RL-TG

125 AMP-4 TERMINAL-RINGLESS

SERVICE	CATALOG NUMBER	HUB	CONNECTORS CU/AL		BY-PASS	DIMENSIONS			CONCENTRIC K.O.'S					
			LINE	LOAD		D"	W"	H"	1	2	3	4	5	6
OH/UG	U7487-RL-TG	H.O.	#6-2/0	#6-2/0	NONE	3 ⁵ / ₁₆	8	11 ¹ / ₂	1 ¹ / ₂	1 ¹ / ₂	2	1 ¹ / ₄	—	1 ¹ / ₄
OH/UG	UAP2057-RL-TG	H.O.	#6-2/0	#6-2/0	NONE	3 ⁵ / ₁₆	8	11 ¹ / ₂	1 ¹ / ₂	1 ¹ / ₂	2	1 ¹ / ₄	—	1 ¹ / ₄

HUBS: For proper hub selection see the hub suffix chart on the accessory page.

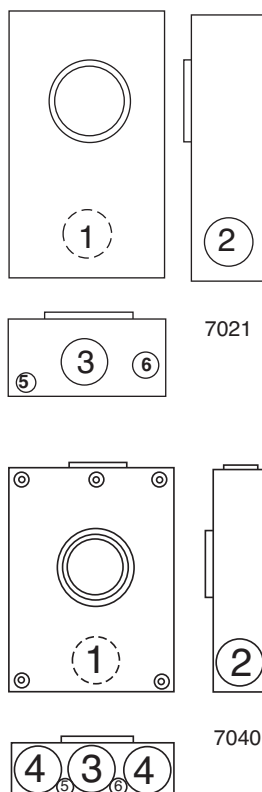
FIFTH TERMINAL: For field mounted fifth terminal order catalog number **5T8K2**.

CONNECTORS: Extruded aluminum connectors are tin plated. Units are supplied with duplex neutral and triplex ground.

Utility requirements for this equipment may vary. Always consult the serving utility for their requirements before ordering or installing equipment in this catalog.



U7021-RL-TG



U7040-XL-TG

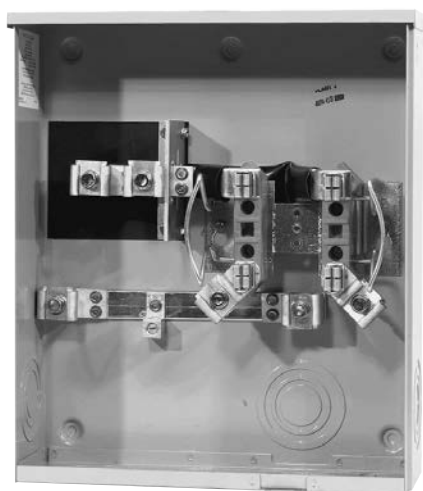
200 AMP—4 TERMINAL—RINGLESS

SERVICE	CATALOG NUMBER	HUB	CONNECTORS CU/AL		BY-PASS	DIMENSIONS			CONCENTRIC K.O.'S					
			LINE	LOAD		D"	W"	H"	1	2	3	4	5	6
OH	U7021-RL-TG	H.O.	#6-350	#6-350	NONE	4 ¹ / ₈	8	15 ¹ / ₂	2 ¹ / ₂	2 ¹ / ₂	2 ¹ / ₂	—	1 ¹ / ₄	1 ¹ / ₂
OH/UG	U7040-XL-TG	C.P.	#6-350	#6-350	NONE	4 ¹ / ₈	11	15 ¹ / ₂	2 ¹ / ₂	2 ¹ / ₂	2 ¹ / ₂	2 ¹ / ₂	1 ¹ / ₄ , 1 ¹ / ₂	1 ¹ / ₄
OH/UG	UAP5792-XL-TG	C.P.	#6-350	#6-350	NONE	4 ⁷ / ₈	13	15 ¹ / ₂	2 ¹ / ₂	2 ¹ / ₂	3	3	1 ¹ / ₄	1 ¹ / ₂

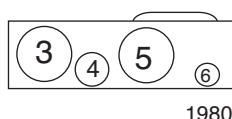
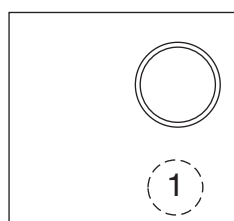
HUBS: For proper hub selection see the hub suffix chart on the accessory page.

FIFTH TERMINAL: For field mounted fifth terminal order catalog number **K5T**.

CONNECTORS: Extruded aluminum connectors are tin plated.



U1980-O



1980



U2569-O

200 AMP—4 TERMINAL—SIDE WIREWAY—RINGLESS

SERVICE	CATALOG NUMBER	HUB	CONNECTORS CU/AL		BY-PASS	DIMENSIONS			CONCENTRIC K.O.'S					
			LINE	LOAD		D"	W"	H"	1	2	3	4	5	6
UG	U1980-O	BLANK	#6-350	#6-350	NONE	4½	13	15½	2½	2½	3	1½	2½	¼, ½
UG	U2569-O*	BLANK	3/8" x 16 STUDS*	#6-350	NONE	4½	13	19	2½	2½	3	1½	2½	¼, ½

FIFTH TERMINAL: For field mounted fifth terminal order catalog number **5T8K2** for round opening, **K5T** for square opening.

CONNECTORS: Extruded aluminum connectors are tin plated.

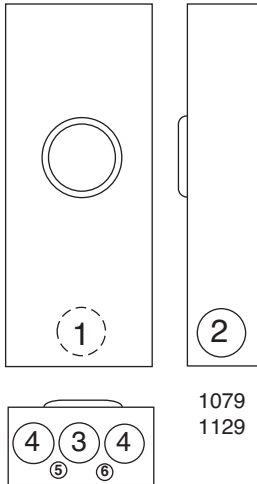
*Line side supplied with 3/8"-16 hex head nuts with Belleville washers. For connector kit, order as extra: **K1539** (350kcmil).

Utility requirements for this equipment may vary. Always consult the serving utility for their requirements before ordering or installing equipment in this catalog.

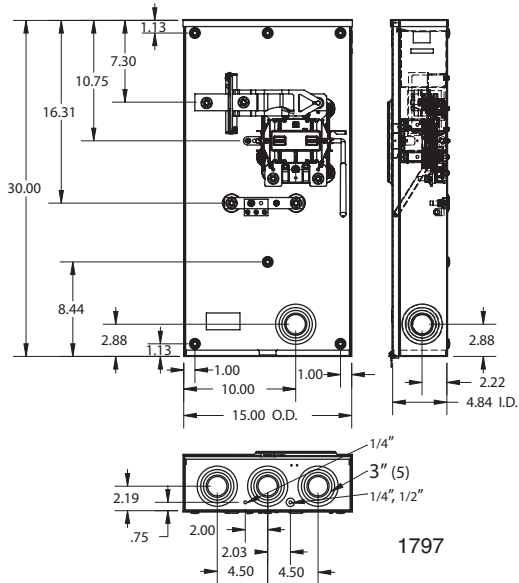
320 AMP CONTINUOUS-4 TERMINAL-JAW CLAMPING LEVER-RINGLESS-600 VAC



U1079-R



U1129-O-K3L-K2L



U1797-O-K3L-K2L

320 AMP-4 TERMINAL-RINGLESS-1Ø3W

SERVICE	CATALOG NUMBER	HUB	CONNECTORS CU/AL		BY-PASS	DIMENSIONS			CONCENTRIC K.O.'S					
			LINE	LOAD		D"	W"	H"	1	2	3	4	5	6
OH	U1079-R**	H.O.	3/8" x 16 STUD	3/8" x 16 STUD	LEVER	4 7/8	13	38 3/4	3	2 1/2	3	3	1/4	1/4, 1/2
UG	U1129-O-K3L-K2L	BLANK	4-600 (1) 1/0-250 (2)	4-600 (1) 1/0-250 (2)	LEVER	4 7/8	15	30	3	3	3	3	1/4	1/4, 1/2
UG	U1797-O-K3L-K2L	BLANK	4-600 (1) 1/0-250 (2)	4-600 (1) 1/0-250 (2)	LEVER	4 7/8	15	30	3	3	3	3	1/4	1/4, 1/2
UG	UAP1797-O-K3L-K2L*	BLANK	4-600 (1) 1/0-250 (2)	4-600 (1) 1/0-250 (2)	LEVER	4 7/8	15	30	3	3	3	3	1/4	1/4, 1/2

HUBS: For proper hub selection see the hub suffix chart on the accessory page.

BYPASS: The lever supplies clamping action and also operates bypass device.

CONNECTORS: Extruded aluminum connectors are tin plated.

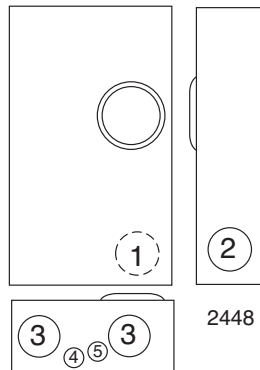
*Aluminum construction: This unit is painted aluminum.

**For connectors, see page accessories page, 2 sets required, 1 for line and 1 for load.

Utility requirements for this equipment may vary. Always consult the serving utility for their requirements before ordering or installing equipment in this catalog.



320 AMP CONTINUOUS 400 AMP MAX.



U2448-X

320 AMP CONTINUOUS-4 TERMINAL-JAW CLAMPING LEVER-RINGLESS-600 VAC

320 AMP-4 TERMINAL-SIDE WIREWAY-RINGLESS-1Ø3W

SERVICE	CATALOG NUMBER	HUB	CONNECTORS CU/AL		BY-PASS	DIMENSIONS			CONCENTRIC K.O.'S					
			LINE	LOAD		D"	W"	H"	1	2	3	4	5	6
OH/UG	U2448-X	C.P.	3/8" x 16 STUD	3/8" x 16 STUD	LEVER	6 1/2	17 3/4	34 1/8	—	3	4	1/4	1/2, 3/4, 1	—

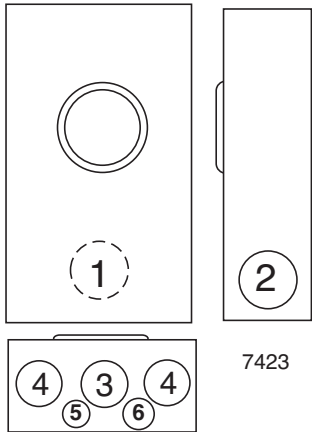
HUBS: For proper hub selection see the hub suffix chart on the accessory page.

BYPASS: The lever supplies clamping action on meter spades and also operates bypass device.

CONNECTORS: Stud type unit supplied with 3/8"-16 hex head nuts with Belleville washers. For connector kits, order as extra:
For single **K1539** (350kcmil) or **K1540** (600kcmil). For twin lug connectors order as extra: **K1350** (350kcmil). Separate kits are required for both line and load.

Utility requirements for this equipment may vary. Always consult the serving utility for their requirements before ordering or installing equipment in this catalog.

200 AMP-7 TERMINAL-RINGLESS-NON JAW CLAMPING-600 VAC



U7423-RXL

200 AMP-7 TERMINAL-RINGLESS-3Ø4W

SERVICE	CATALOG NUMBER	HUB	CONNECTORS CU/AL		BY-PASS	DIMENSIONS			CONCENTRIC K.O.'S					
			LINE	LOAD		D"	W"	H"	1	2	3	4	5	6
OH/UG	U7423-RXL	C.P.	#6-350	#6-350	LEVER	4 1/2	13	19	3	2 1/2	3	3	1/4	1/4, 1/2

HUBS: For proper hub selection see the hub suffix chart on the accessory page.

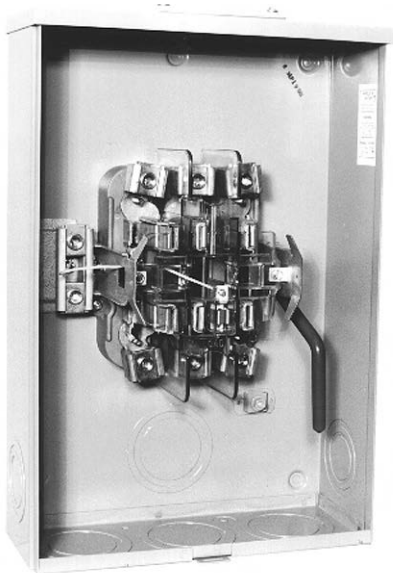
BYPASS: Lever operates bypass device only; does not provide clamping action on meter spades.

CONNECTORS: Units supplied with extruded aluminum connectors and bonded triplex neutral.

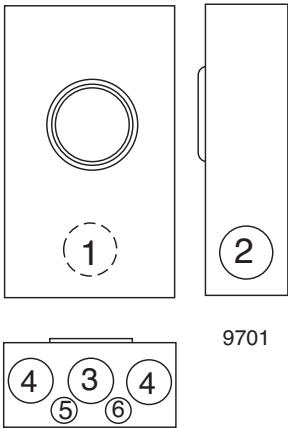
For field installed isolated neutral, order kit number **K1047**.

Utility requirements for this equipment may vary. Always consult the serving utility for their requirements before ordering or installing equipment in this catalog.





U9701-RRL



9701

200 AMP—7 TERMINAL—RINGLESS—3Ø4W

SERVICE	CATALOG NUMBER	HUB	CONNECTORS CU/AL		BY-PASS	DIMENSIONS			CONCENTRIC K.O.'S					
			LINE	LOAD		D"	W"	H"	1	2	3	4	5	6
OH/UG	U9701-RRL	H.O.	#6-350	#6-350	LEVER	4 ⁷ / ₈	13	19	3	2 ¹ / ₂	3	3	1 ¹ / ₄	1 ¹ / ₄ , 1 ¹ / ₂
OH/UG	UAP9701-RRL	H.O.	#6-350	#6-350	LEVER	4 ⁷ / ₈	13	19	3	2 ¹ / ₂	3	3	1 ¹ / ₄	1 ¹ / ₄ , 1 ¹ / ₂

HUBS: For proper hub selection see the hub suffix chart on the accessory page.
INSULATED NEUTRAL: For field installed insulated neutral for catalog numbers **U9701** and **UAP9701** order kit number **K1047**.

Utility requirements for this equipment may vary. Always consult the serving utility for their requirements before ordering or installing equipment in this catalog.

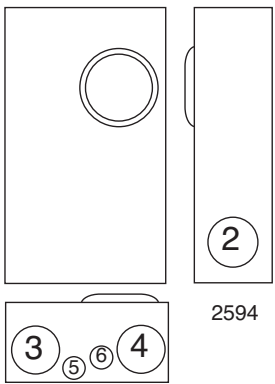
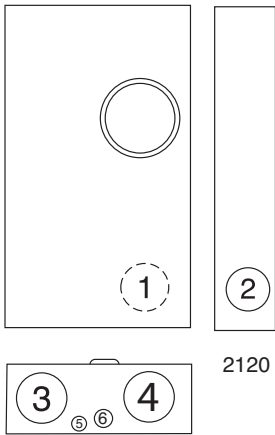


320 AMP-CONTINUOUS-7 TERMINAL-JAW CLAMPING LEVER-RINGLESS-600 VAC

320 AMP CONTINUOUS
400 AMP MAX.



U2120-X



U2594-X

320 AMP—SIDE WIREWAY—7 TERMINAL—RINGLESS—3Ø4W

SERVICE	CATALOG NUMBER	HUB	CONNECTORS CU/AL		BY-PASS	DIMENSIONS			CONCENTRIC K.O.'S					
			LINE	LOAD		D"	W"	H"	1	2	3	4	5	6
UH	U2120-X	C.P.	3/8" x 16 STUD	3/8" x 16 STUD	LEVER	6 ¹ / ₂	17 ³ / ₄	31 ³ / ₄	4	3	4	4	1/4	1/2, 3/4, 1
OH/UG	U2594-X	C.P.	3/8" x 16 STUD	3/8" x 16 STUD	LEVER	6 ¹ / ₂	17 ³ / ₄	34 ¹ / ₈	—	3	4	4	1/4	1/2, 3/4, 1

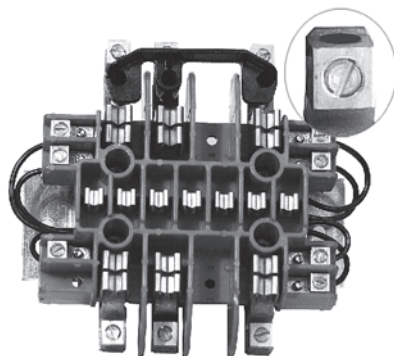
HUBS: For proper hub selection see the hub suffix chart on the accessory page.

BYPASS: Lever supplies clamping action on meter spades and also operates bypass device.

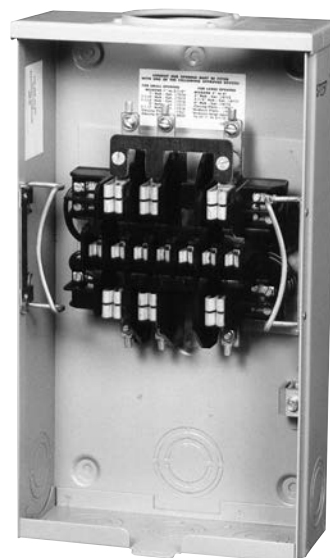
CONNECTORS: Stud type units supplied with 3/8"-16 hex head nuts with Belleville washers. For single lug connector kits, order as extra: **K3082** (350kcmil) or **K3441** (600kcmil). For twin lug connectors order as extra: **K3442** (350kcmil). Separate kits are required for both line and load.

Utility requirements for this equipment may vary. Always consult the serving utility for their requirements before ordering or installing equipment in this catalog.





Block with detail


Block Assembly for UC7237-RL
(Prefix "UC" designates
sleeve connector for
#4 wire maximum)

RINGLESS—PLUNGER TYPE BYPASS

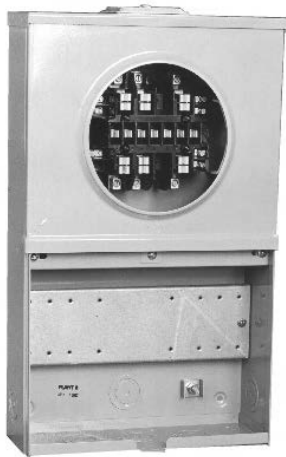
NO. OF TERMS	METER FORM	CATALOG NUMBER	HUB	CONNECTORS CU	BY- PASS	DIMENSIONS			CONCENTRIC K.O.'S					
						D"	W"	H"	1	2	3	4	5	6
5	3S	UC1290-RL	H.O.	#14 - #4 MAX	YES	3 ⁵ / ₁₆	8	14	1 ¹ / ₂	1 ¹ / ₂	1 ¹ / ₄	1 ¹ / ₄	1 ¹ / ₄	1 ¹ / ₄
6	4S	UC1299-RL	H.O.	#14 - #4 MAX	YES	3 ⁵ / ₁₆	8	14	1 ¹ / ₂	1 ¹ / ₂	1 ¹ / ₄	1 ¹ / ₄	1 ¹ / ₄	1 ¹ / ₄
8	5S	UC7235-RL	H.O.	#14 - #4 MAX	YES	3 ⁵ / ₁₆	8	14	1 ¹ / ₂	1 ¹ / ₂	1 ¹ / ₄	1 ¹ / ₄	1 ¹ / ₄	1 ¹ / ₄
13	6, 8, 9 & (ALT) 10S	UC7237-RL	H.O.	#14 - #4 MAX	YES	3 ⁵ / ₁₆	8	14	1 ¹ / ₂	1 ¹ / ₂	1 ¹ / ₄	1 ¹ / ₄	1 ¹ / ₄	1 ¹ / ₄

HUBS: For proper hub selection see the hub suffix chart on the accessory page.

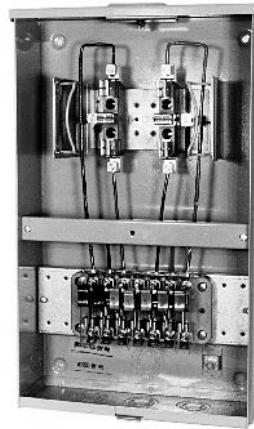
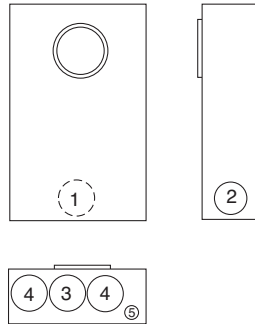
BYPASS: Plunger type bypass automatically closes when meter is removed.

CONNECTORS: Units are supplied with sleeve type connectors (#4 max.)

Utility requirements for this equipment may vary. Always consult the serving utility for their requirements before ordering or installing equipment in this catalog.



UC7449-XL



UC7532-RL-TS10-0109
(shown prewired with
Milbank Test Switch)



UC7478-YL

1 PIECE COVER—RINGLESS—WITH TEST SWITCH PROVISION *

NO. OF TERMS	METER FORM	CATALOG NUMBER	HUB	CONNECTORS CU	BY- PASS	DIMENSIONS			CONCENTRIC K.O.'S					
						D"	W"	H"	1	2	3	4	5	6
6	4S	UC7478-RL	H.O.	#14 - #4 MAX	NONE	4 ¹ / ₈	12	20	1 ¹ / ₄	1 ¹ / ₄	1 ¹ / ₄	1 ¹ / ₄	1 ¹ / ₄	1 ¹ / ₄ , 1 ¹ / ₂
8	5S	UC7444-RL	H.O.	#14 - #4 MAX	NONE	4 ¹ / ₈	12	20	1 ¹ / ₄	1 ¹ / ₄	1 ¹ / ₄	1 ¹ / ₄	1 ¹ / ₄	1 ¹ / ₄ , 1 ¹ / ₂
13	6, 8, 9 & (ALT) 10S	UC7445-RL	H.O.	#14 - #4 MAX	NONE	4 ¹ / ₈	12	20	1 ¹ / ₄	1 ¹ / ₄	1 ¹ / ₄	1 ¹ / ₄	1 ¹ / ₄	1 ¹ / ₄ , 1 ¹ / ₂

2 PIECE COVER—RINGLESS—WITH TEST SWITCH PROVISION *

NO. OF TERMS	CATALOG NUMBER	HUB	CONNECTORS CU	BY- PASS	DIMENSIONS			CONCENTRIC K.O.'S					
					D"	W"	H"	1	2	3	4	5	6
6	UC7532-RL	H.O.	#14 - #4 MAX	NONE	4 ¹ / ₈	12	20	1 ¹ / ₄	1 ¹ / ₄	1 ¹ / ₄	1 ¹ / ₄	1 ¹ / ₄	1 ¹ / ₄ , 1 ¹ / ₂
8	UC7448-RL	H.O.	#14 - #4 MAX	NONE	4 ¹ / ₈	12	20	1 ¹ / ₄	1 ¹ / ₄	1 ¹ / ₄	1 ¹ / ₄	1 ¹ / ₄	1 ¹ / ₄ , 1 ¹ / ₂
13	UC7449-RL	H.O.	#14 - #4 MAX	NONE	4 ¹ / ₈	12	20	1 ¹ / ₄	1 ¹ / ₄	1 ¹ / ₄	1 ¹ / ₄	1 ¹ / ₄	1 ¹ / ₄ , 1 ¹ / ₂

HUBS: For proper hub selection see the hub suffix chart on the accessory page.

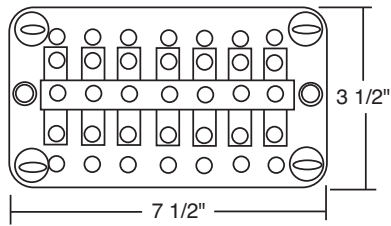
PREWIRING: If custom factory prewiring is required, specify on order. Be sure to include meter socket catalog number, test switch model and number, and meter form number. Please be sure to provide a copy of your wiring diagram.

CONNECTORS: Units are supplied with sleeve type connectors (#4 max.)

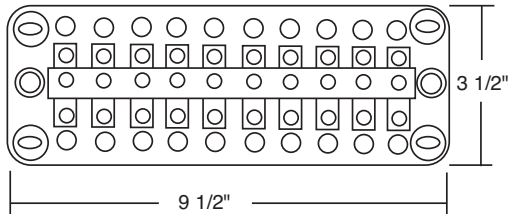
TEST SWITCH COVER: Units on this page are not designed for use with test switch covers.

SERVICE: Units are rated for overhead or underground service.

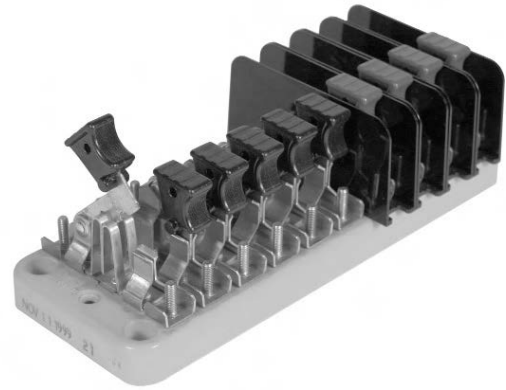
Utility requirements for this equipment may vary. Always consult the serving utility for their requirements before ordering or installing equipment in this catalog.




4 & 7 Pole Base



7 & 10 Pole Base



CATALOG NUMBER	4-POLE						
TS04-0101	X	P	Pn	X	C+	C	X
TS04-0104	X	C+	C	X	P	Pn	X

KEY	
P	Potential Switch
C+	Line side current switch with short circuit assembly
C	Load side current switch with test jack assembly
N	Neutral bar (no switch)
Pn	Neutral potential switch
X	Unused position on base
	Insulating barrier, isolates both sides of switch

CATALOG NUMBER	7-POLE						
TS07-0105	P	P	Pn	C+	C	C+	C

CATALOG NUMBER	7-POLE ON A 10 POLE BASE									
TS07-0049	P	X	P	X	P	X	C+	C	C	C+

CUSTOM POLE ARRANGEMENTS:

The key may be used to diagram your own pole arrangement. Be sure to specify base size and whether all C+ line side, current switch / shunt circuit assemblies are to be bussed together. The catalog numbers shown are connected in line-load pairs; therefore, if bussed is required, different catalog numbers will apply.

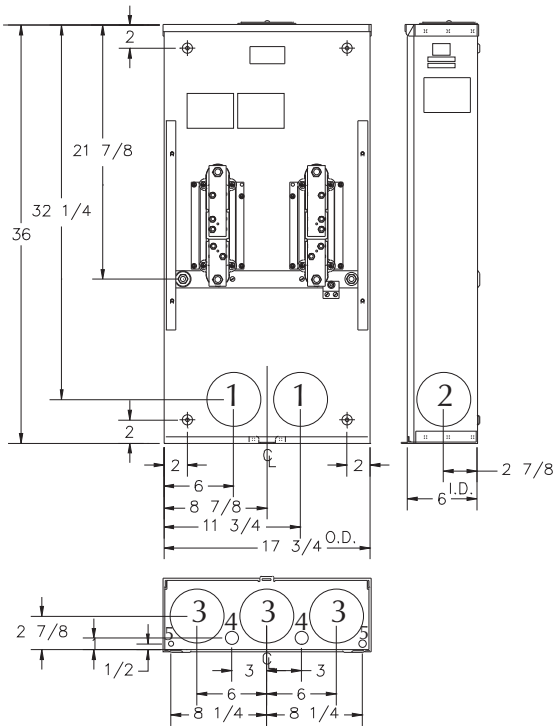
CATALOG NUMBER	10-POLE									
TS10-0109	P	P	Pn	C+	C	C+	C	C+	C	C
TS10-0110	P	C+	C	P	C+	C	P	C+	C	Pn
TS10-0111	P	P	Pn	C	C+	C	C+	C	C+	C
TS10-0112	C+	C	C+	C	C+	C	P	P	P	Pn

Utility requirements for this equipment may vary. Always consult the serving utility for their requirements before ordering or installing equipment in this catalog.

PROVISION FOR BOLT-IN BYPASS



U4664-X-8507



4 TERMINAL-RINGLESS-1Ø3W-OVERHEAD / UNDERGROUND

SERV.	CATALOG NUMBER	HUB	CONNECTOR CU/AL		DIMENSIONS			CONCENTRIC K.O.'S (INCHES)				
			LINE	LOAD	D"	W"	H"	1	2	3	4	5
OH/UG	U4664-X-8507	(1) Large C.P. (-X)	1/2"-20 STUD	1/2"-20 STUD	6	17 3/4	36	3,3 1/2, 4	3,3 1/2, 4	3,3 1/2, 4	1 1/2, 3/4	1/4

APPLICATION: For use with 1Ø3W self-contained type MS-K watthour meters.

CAPACITY: 480 amperes continuous / 600 amp max.

TERMINALS: 1/2"-20 steel studs with nuts and captive Belleville washers to accommodate various bolt-on type lugs for conductors from #6 to 800 kcmil.

ENCLOSURE: Constructed of 14 gauge galvanized steel suitable for indoor or outdoor installations.
Ringless cover.

METER MOUNTING: Two position stud type. One set of studs provides out-of-service storage. The in-service studs are positioned so the meter cannot be installed upside-down. Full travel meter opening slide plate eliminates the need for repositioning the slide plate for the "IN" or "OUT OF SERVICE" position.

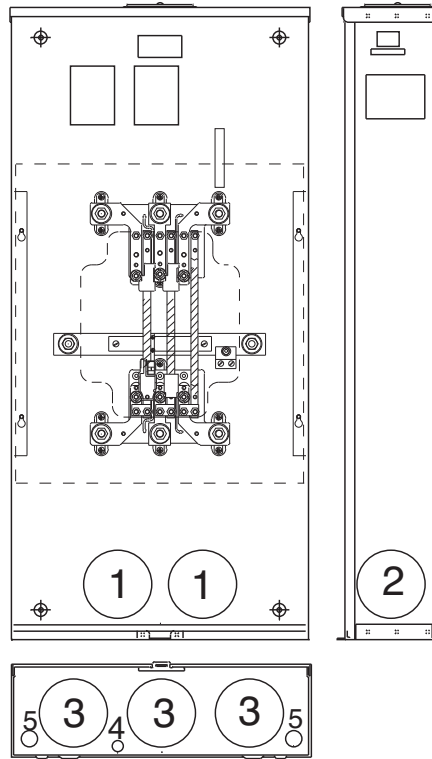
BLOCKS: Glass fiber reinforced polyester plastic. High arc withstand strength and track resistant.
Provisions for lightning arresters.

WEIGHT: 58 lbs.—approximate.

CONNECTORS: Phase and neutral connectors not included. For lug connector kit explanation see accessories page.

Utility requirements for this equipment may vary. Always consult the serving utility for their requirements before ordering or installing equipment in this catalog.





600 AMP MAX
480 AMP CONTINUOUS

PROVISION FOR
BOLT-IN BYPASS
(SUPPLIED BY UTILITY)



U4667-X-8528

480 AMP CONTINUOUS-600 AMP MAX-4 & 7 TERMINAL
HEAVY DUTY-RINGLESS-1Ø & 3Ø-600 VAC

CATALOG NUMBER	WIRE RANGE	TYPE	WIRE ENTRY
Z703916-AC	¾" - 800	SINGLE	SIDE
Z703921-AC	¾" - 800	SINGLE	FRONT
Z703918-AC	#4-350	TWIN	FRONT
Z703919-AC	#6-350	TWIN	SIDE
Z704693-AC	#2-500	TWIN	SIDE
Z704694-AC	#4-500	TWIN	FRONT
Z708145-AC	#6-250	TRIPLE	FRONT

4 & 7 TERMINAL — RINGLESS

CATALOG NUMBER	PHASE	HUB	CONNECTORS LINE/LOAD	GROUND LUG	DIMENSIONS			CONCENTRIC K.O.'S				
					D"	W"	H"	1	2	3	4	5
U4667-X-8528	3	C.P.	NONE	#12 - 1/0	6	20¾"	43	4	4	4	¼"	½, ¾"
U4667-XT-9526	3	C.P.(2)	NONE	#12 - 1/0	6	20¾"	43	4	4	4	¼"	½, ¾"
*UA4667-XT-9527	3	C.P.(2)	NONE	#12 - 1/0	6	20¾"	43	4	4	4	¼"	½, ¾"
*UA4667-X-8062	3	C.P.	703919/703918	#12 - 1/0	6	20¾"	34	4	4	4	¼"	½, ¾"
*UA4667-X-8529	3	C.P.	NONE	#12 - 1/0	6	20¾"	43	4	4	4	¼"	½, ¾"
U4664-XT-9507	1	C.P.	NONE	#12 - 1/0	6	17¾"	36	4	4	4	½, ¾"	¼"
U4667-X-8061	3	C.P.	703919/703918	#12 - 1/0	6	20¾"	34	4	4	4	¼"	½, ¾"

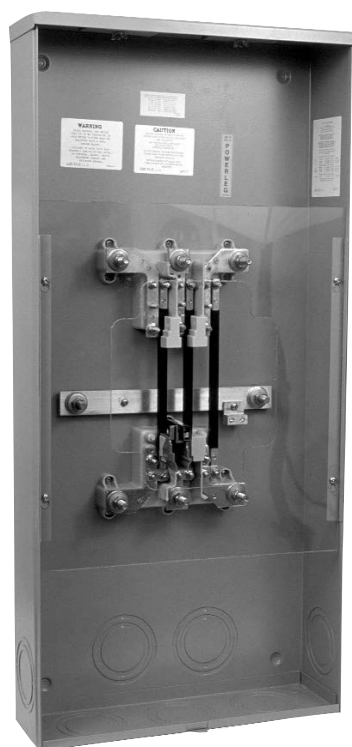
HUBS: For proper hub selection, see the hub suffix chart on the accessory page.

CONNECTORS: Units require a total of 8 connectors. These units are supplied with two ground lugs. Order line and load connectors as extra. See chart above for ordering information.

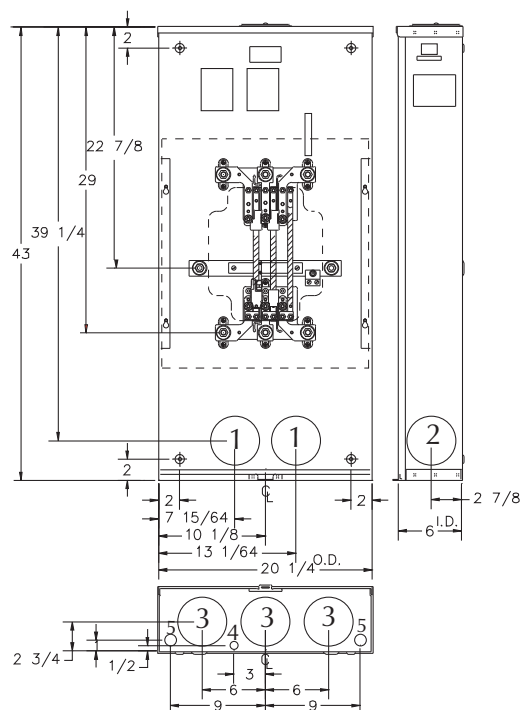
***ALUMINUM CONSTRUCTION:** This unit is constructed of aluminum.

Utility requirements for this equipment may vary. Always consult the serving utility for their requirements before ordering or installing equipment in this catalog.

PROVISION FOR BOLT-IN BYPASS



U4667-XT-BAR-9572
(Shown without connectors)



U4667-XT-BAR-9572
UA4667-XT-9504

7 TERMINAL-RINGLESS-3Ø4W-OVERHEAD / UNDERGROUND

CATALOG NUMBER	PHASE	HUB	CONNECTORS LINE/LOAD	GROUND LUG	DIMENSIONS			CONCENTRIC K.O.'S				
					D"	W"	H"	1	2	3	4	5
U4667-XT-BAR-9572	3	C.P.(2)	704693 / 704694	#12 - 1/0	6	20 1/4	43	4	4	4	1/4	1 1/2 3/4
UA4667-XT-9504	3	C.P.(2)	1/2"-20 STUD	#12 - 1/0	6	20 1/4	43	4	4	4	1/4	1 1/2 3/4

APPLICATION: For use with self-contained Type MT-K watt-hour meters on 3Ø4W wye or 4-wire delta services.

CAPACITY: 480 amperes continuous / 600 amperes maximum.

TERMINALS: 1/2"-20 plated steel studs with nuts and captive Belleville washers to accommodate various bolt-on type lugs for conductors from #6 to 800 kcmil CU or AL.

ENCLOSURE: Constructed of 14 gauge galvanized steel suitable for indoor or outdoor installations. Ringless cover.

UA4667-XT-9504 has aluminum enclosure. Consult factory. (-BAR) suffix provides Lexan® barrier.

METER MOUNTING: The meter is mounted on 6 studs using 5/16"-24 studs with nuts with captive Belleville washers.

The upper studs are positioned so that the meter cannot be installed upside down. Use 1/2" insulated wrench.

Another set of studs provides on site out-of-service storage. Full travel meter opening slide plate eliminates the need for re-positioning the slide plate for the "IN" or "OUT OF SERVICE" position.

WEIGHT: 71 lbs.—approximate.

CONNECTORS: Phase and neutral connectors included on **U4667-XT-BAR-9572**. **UA4667-XT-9504** with 1/2"-20 studs require (8) connectors for line & load. For Lug connector kit explanation refer to chart on page 16.

Utility requirements for this equipment may vary. Always consult the serving utility for their requirements before ordering or installing equipment in this catalog.

**SCE&G APPROVED K4 & K7 METER SOCKET CONNECTORS
(FOR USE WITH 201-600A 1Ø & 201-600A 3Ø SERVICE)**

Milbank Catalog Number

U4664-X-8507

400 amp–4 Terminal–1Ø3W–OH / UG–K4
(for use on 201-600A 120 / 240V 1Ø service)

Lug Requirements:

Option 1: Overhead

- Line Side (2) **Z705545-AC** – Single 3/0-800 kcmil side entry
- Load Side (2) **Z708124-AC** – Single 3/0-800 kcmil bottom entry
- Neutral (2) **Z703921-AC** – Single 3/0-800 kcmil front entry

Option 2: Underground

- Line Side (2) **Z703917-AC** – Parallel #6-350 kcmil side entry
- Load Side (2) **Z705456-AC** – Parallel #6-350 kcmil bottom entry
- Neutral (1) **Z705420-AC** – Quad #6-350 kcmil front entry

Milbank Catalog Number

U4667-XT-9504

480 amp continuous–600 amp max–7 Terminal–3Ø4W
600V–WYE or DELTA–OH / UG–K7

Lug Requirements:

Option 1: Overhead

- (8) **Z703921-AC** – Single 3/0-800 kcmil front entry

Option 2: Underground

- (3) **Z703916-AC** – Single 3/0-800 kcmil side entry
- (5) **Z703921-AC** – Single 3/0-800 kcmil front entry

Option 3: Overhead

- (8) **Z703918-AC** – Parallel #4-350 kcmil front entry

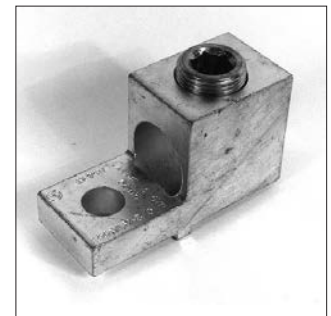
Option 4: Underground

- (3) **Z703919-AC** – Parallel #6-350 kcmil side entry
- (5) **Z703918-AC** – Parallel #4-350 kcmil front entry

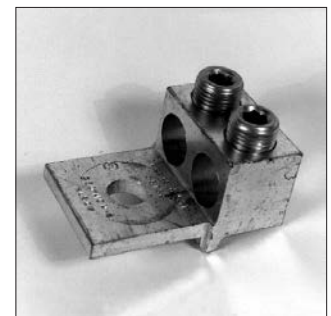
CONNECTOR CATALOG NUMBER	WIRE RANGE	TYPE	WIRE ENTRY
Z703916-AC	3/0-800 kcmil	SINGLE	SIDE
Z703921-AC	3/0-800 kcmil	SINGLE	FRONT
Z703918-AC	#4-350 kcmil	TWIN	FRONT
Z703919-AC	#6-350 kcmil	TWIN	SIDE
Z704693-AC	#2-500 kcmil	TWIN	SIDE
Z704694-AC	#4-500 kcmil	TWIN	FRONT
Z705545-AC	3/0-800 kcmil	SINGLE	SIDE
Z708124-AC	3/0-800 kcmil	SINGLE	BOTTOM
Z703917-AC	#6-350 kcmil	TWIN	SIDE
Z705456-AC	#6-350 kcmil	TWIN	BOTTOM
Z705420-AC	#6-350 kcmil	QUAD	FRONT



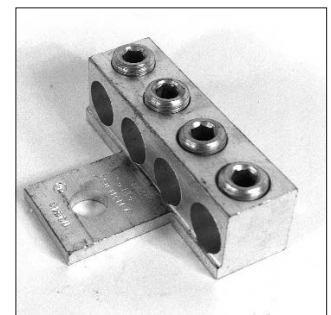
#Z703916-AC #58852



#Z703921-AC #56476



#Z703918-AC #56732



#Z705420-AC #56426

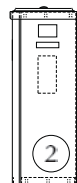
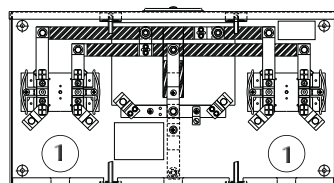


#Z703919-AC #58853

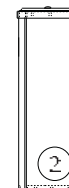
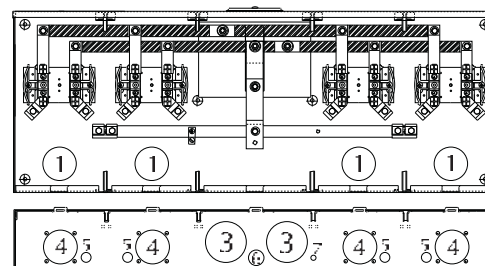
Utility requirements for this equipment may vary. Always consult the serving utility for their requirements before ordering or installing equipment in this catalog.



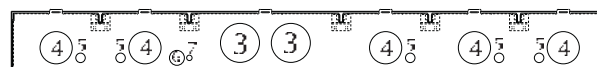
U1252-X-K1



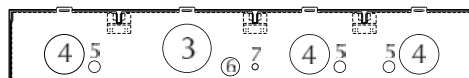
1252



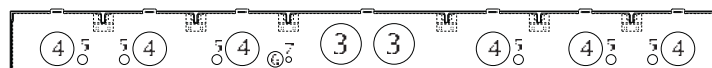
1254



1255



1253 Bottom



1256 Bottom

150 & 200 AMP-4 TERMINAL-MULTIPLE POSITION-RINGLESS-1Ø3W-OH/UG*

AMPS	NO. OF POS.	CATALOG NUMBER	HUB	CONNECTOR CU/AL		BY-PASS	DIMENSIONS			CONCENTRIC K.O.'S					
				LINE	LOAD		D"	W"	H"	1	2	3	4	5	6
150	2	U1232-X-HSP	C.P.	3/8" x 16 STUD	#6-350	NONE	5 1/8	26 1/2	14	2 1/2	3	2 1/2	1/2	1/4	1
150	3	U1233-X-HSP	C.P.	3/8" x 16 STUD	#6-350	NONE	5 1/8	34 3/4	14	2 1/2	3	(3)2 1/2	1/2	1/4	1
150	4	U1234-X-HSP	C.P.	3/8" x 16 STUD	#6-350	NONE	5 1/8	42 7/8	16	2 1/2	3	(4)2 1/2	1/2	1/4	1
150	5	U1235-X-HSP	C.P.	3/8" x 16 STUD	#6-350	NONE	5 1/8	54 7/8	16	2 1/2	3	(5)2 1/2	1/2	1/4	1
150	6	U1236-X-HSP	C.P.	3/8" x 16 STUD	#6-350	NONE	5 1/8	63 1/16	18	2 1/2	3	(6)2 1/2	1/2	1/4	1
200	2	U1252-X-K1	C.P.	#2-350	#6-350	NONE	5 1/8	26 1/2	14	2 1/2	3	2 1/2	1/2	1/4	1
200	2	U1252-X-HSP	C.P.	#2-350	#6-350	NONE	5 1/8	26 1/2	14	2 1/2	3	2 1/2	1/2	1/4	1
200	3	U1253-X-HSP	C.P.	#2-350	#6-350	NONE	5 1/8	34 11/16	14	2 1/2	3	2 1/2	1/2	1/4	1
200	4	U1254-X-HSP	C.P.	#2-350	#6-350	NONE	5 1/8	42 7/8	16	2 1/2	3	2 1/2	1/2	1/4	1
200	5	U1255-X-HSP	C.P.	#2-350	#6-350	NONE	5 1/8	54 7/8	16	2 1/2	3	2 1/2	1/2	1/4	1
200	6	U1256-X-HSP	C.P.	#2-350	#6-350	NONE	5 1/8	63 1/16	18	2 1/2	3	2 1/2	1/2	1/4	1

All units are configured for underground service.

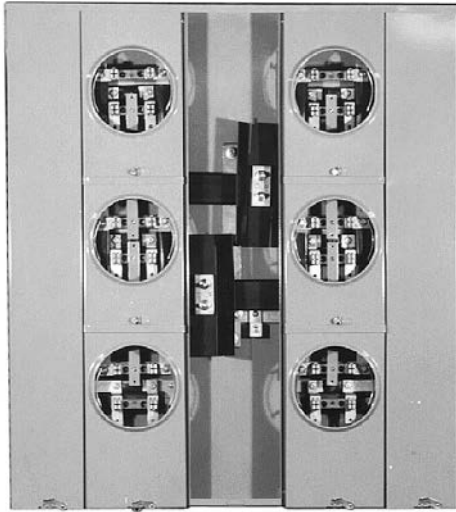
CONNECTORS: Extruded aluminum connectors are tin plated.

BUSSING: Bussing is 5/16" x 1" aluminum except for the 4, 5 & 6 position units where 3/8" x 1" aluminum bussing is supplied.

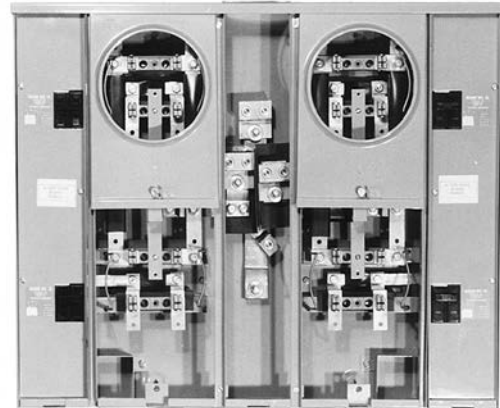
***FOR OVERHEAD SERVICE:** The U1254-56 units are **factory assembled for underground service**. If overhead service is desired, an extension kit is required. Order catalog number **K3923** for the U1254 & U1255 units, and **K3955** for the U1256 unit.

FIFTH TERMINAL: For field installed fifth terminal, order catalog number **K5T**.

Utility requirements for this equipment may vary. Always consult the serving utility for their requirements before ordering or installing equipment in this catalog.



U2866-X


U2854-X-4/125
(Order circuit breakers as extra)

125 AMP/POSITION

VERTICAL

200 AMP/POSITION

NO. OF POS.	CATALOG NUMBER	MAIN BUS RATING	LINE CONNECTOR SIZE
2	U2852-X	200 AMP	*3/8"-16 STUD
3	U2853-X	200 AMP	*3/8"-16 STUD

NO. OF POS.	CATALOG NUMBER	MAIN BUS RATING	LINE CONNECTOR SIZE
2	U2862-X	250 AMP	*3/8"-16 STUD
3	U2863-X	300 AMP	*3/8"-16 STUD

125 AMP/POSITION

RECTANGULAR

200 AMP/POSITION

NO. OF POS.	CATALOG NUMBER	MAIN BUS RATING	LINE CONNECTOR SIZE
4	U2854-X	400 AMP	*3/8"-16 STUD
5	U2855-X	400 AMP	*3/8"-16 STUD
6	U2856-X	400 AMP	*3/8"-16 STUD

NO. OF POS.	CATALOG NUMBER	MAIN BUS RATING	LINE CONNECTOR SIZE
4	U2864-X	400 AMP	*3/8"-16 STUD
5	U2865-X	600 AMP	*3/8"-16 STUD
6	U2866-X	600 AMP	*3/8"-16 STUD

CONNECTOR KITS *

SIZE	SUFFIX	KIT NUMBER	COMPATIBLE WITH	WIRE RANGE
SINGLE	-K1	K1539	U2852-56 U2862-66	#6-350 or 2-1/0 / 250
	-K3	K1540	U2854-56 U2864-66	#4-600
TWIN	-K2	K1350	U2854-56 U2863-66	#6-350
	-K4	K1541	U2864-66	#2-600

*CONNECTORS: For line wire connector kits, order separately.

FIFTH TERMINALS: For field mounted fifth terminal order catalog number K2381. Order one per meter position (9 o'clock position only).

BREAKERS: Units have provision for one double pole main per meter position. Breakers not included. Order as extra Milbank.

PLUG-IN BREAKER COMPATIBILITY CHART

AMPS	CUTLER-HAMMER (WESTINGHOUSE)	SIEMENS (ITE)	SIEMENS MURRAY / CROUSE-HINDS	G.E.	SQ-D
125-200	HQP / BR / WBJ	—	MD	THQ	—
≤ 100	QP / BR / HQP	QP	MP	THQ	HOMELINE

Utility requirements for this equipment may vary. Always consult the serving utility for their requirements before ordering or installing equipment in this catalog.

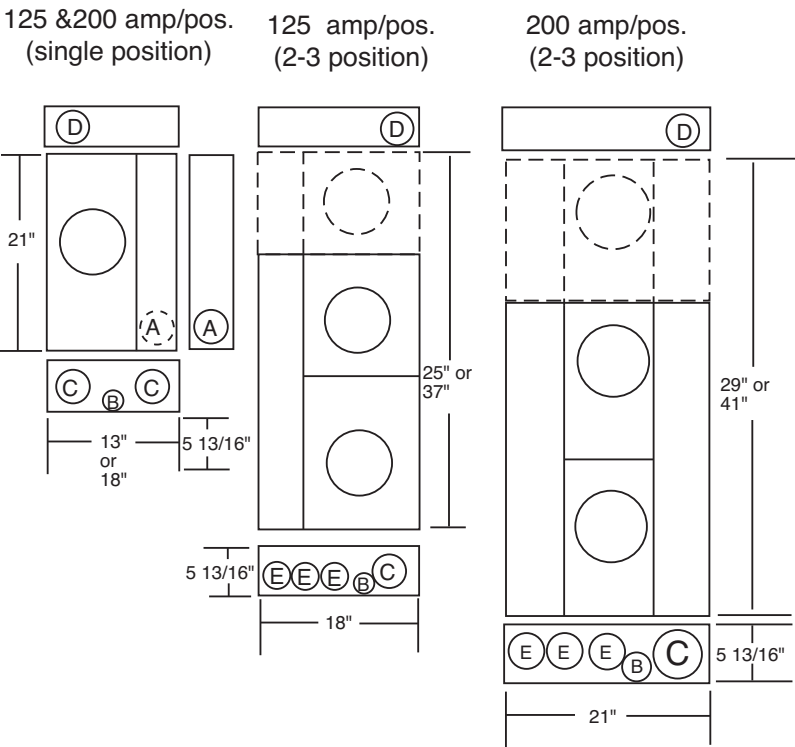


U2852-X

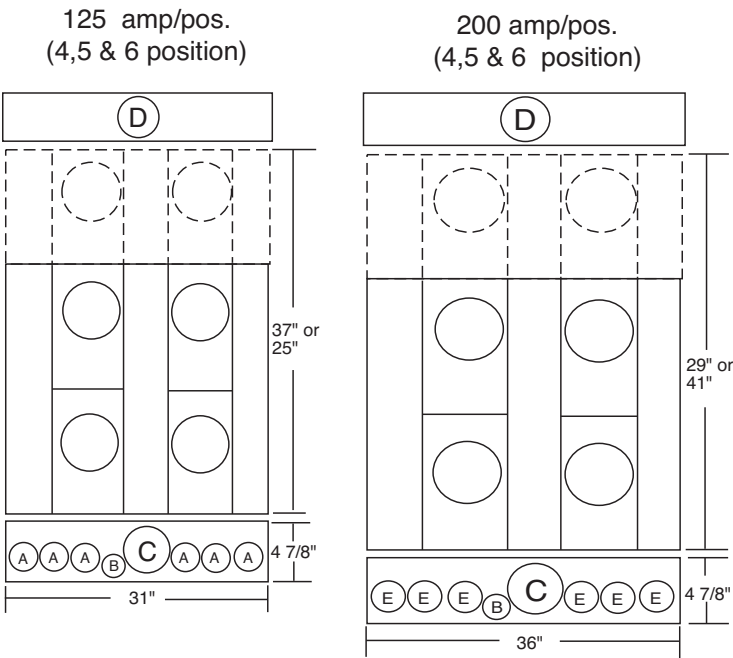
CONDOMINIUM
METERING BANKS

FIG.	DIMENSIONS
A	1 1/4" CONCENTRIC K.O.
B	1/4, 1/2" CONCENTRIC K.O.
C	3" CONCENTRIC K.O.
D	4" HUB OPENING
E	2" CONCENTRIC K.O.

VERTICAL

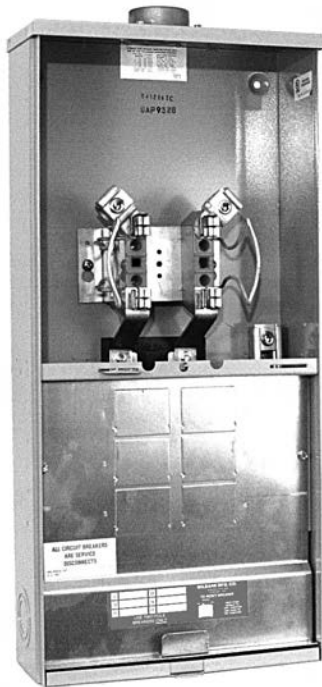


RECTANGULAR

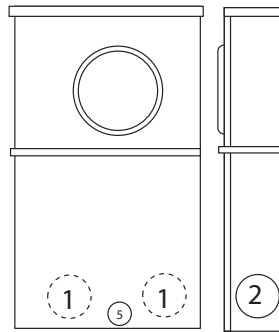


Utility requirements for this equipment may vary. Always consult the serving utility for their requirements before ordering or installing equipment in this catalog.

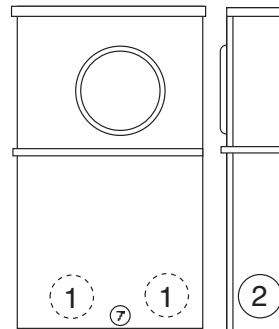
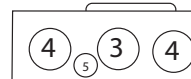




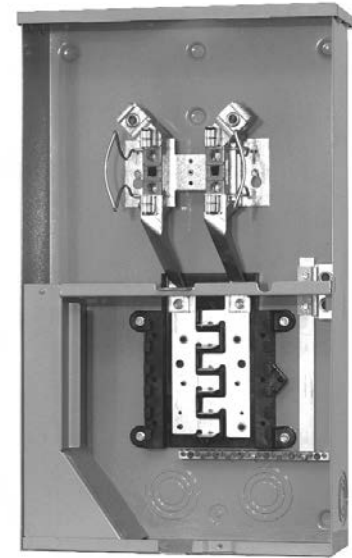
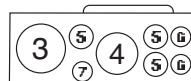
UAP9328-RL



9328



5024



UAP5024-XL

200 AMP-4 TERMINAL-RINGLESS-METER SOCKET / CB COMBO-ALUMINUM CONSTRUCTION

SERVICE	CATALOG NUMBER	HUB	CONNECTORS CU/AL	BY- PASS	DIMENSIONS			CONCENTRIC K.O.'S						
			LINE		D"	W"	H"	1	2	3	4	5	6	7
OH	UAP9328-DL	2"	#6-350	NONE	4 ¹ / ₂	12 ¹ / ₈	26	2	2	2 ¹ / ₂	2 ¹ / ₂	1 ¹ / ₄ , 1 ¹ / ₂	—	—
OH/UG	UAP5024-XL*	C.P.	#2-350	NONE	4 ¹ / ₂	14 ¹ / ₈	24	2	2	3	2 ¹ / ₂	1 ¹ / ₄ , 1 ¹ / ₂ , 1	1 ¹ / ₂ , 3 ³ / ₄	1 ¹ / ₄ , 1 ¹ / ₂

HUBS: Order hub as extra. Refer to accessory page.

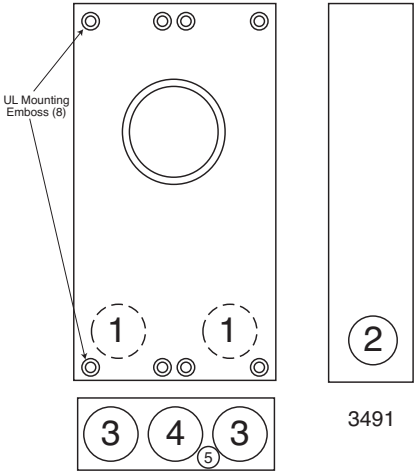
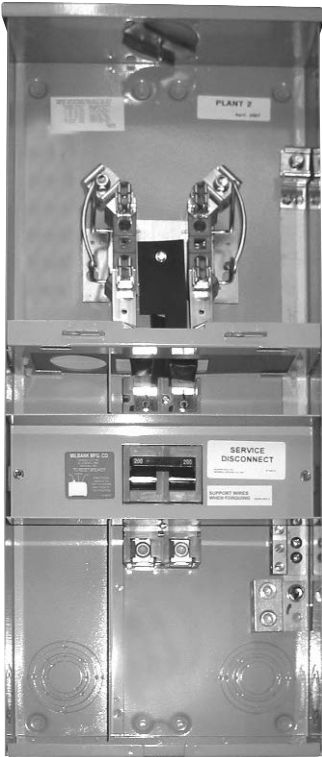
CONNECTORS: Extruded aluminum connectors are tin plated.

BUSSING: Factory bussed from load side meter to line side CB section. Load side bus bars and circuit breaker interior are made from plated copper

***WIREWAY:** Provided with underground pull section wireway with removable cover

BREAKERS: Breaker section has provision for six double pole "plug-in" type circuit breakers. All circuit breakers will be parallel.

100, 150 & 200 AMP-4 TERMINAL-METER MAIN-RINGLESS-120/240 VAC



U3491-XL-200

4 TERMINAL-METER MAIN-RINGLESS-1Ø3W

AMPS	SERVICE	CATALOG NUMBER	HUB	CONNECTOR CU/AL		BY-PASS	DIMENSIONS			CONCENTRIC K.O.'S				
				LINE	LOAD		D"	W"	H"	1	2	3	4	5
150	OH/UG	U3491-XL-150	C.P.	#6-350	#1-300	NONE	4 ¹ / ₈	12	29	2 ¹ / ₂	2 ¹ / ₂	2 ¹ / ₂	2 ¹ / ₂	1/4
200	OH/UG	U3491-XL-200	C.P.	#6-350	#1-300	NONE	4 ¹ / ₈	12	29	2 ¹ / ₂	2 ¹ / ₂	2 ¹ / ₂	2 ¹ / ₂	1/4
200	OH/UG	U3795-XL-R-200	C.P.	#6-350	#1-300	NONE	4 ⁷ / ₈	13	29	3	3	-R	3	1/4, 1/2

HUBS: For proper hub selection refer to the hub suffix chart on the accessory page.

BREAKERS: Bolt-on circuit breakers are factory installed.

BREAKER CHART

AMPS	CATALOG NUMBER	BREAKER
150	U3491-RL	UQFB-150-X1
200	U3491-RL	UQFB-200-X1
200	U3795-XL-R-200	UQFB-200-X1

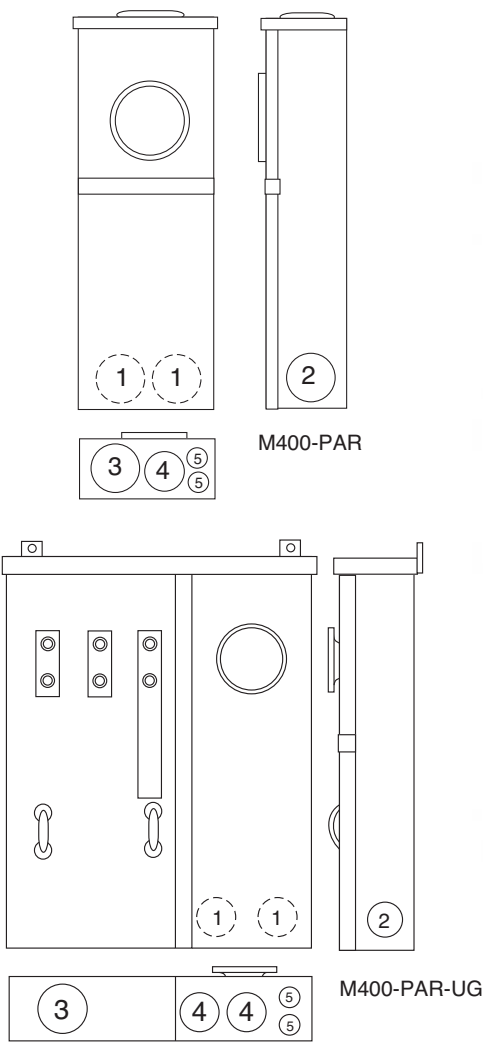
Utility requirements for this equipment may vary. Always consult the serving utility for their requirements before ordering or installing equipment in this catalog.



320 AMP CONTINUOUS
400 AMP MAX



M400-PAR



M400-PAR-UG

320 AMP-4 TERMINAL-METER MAINS-RINGLESS-120/240 VAC

320 AMP-1Ø-4 TERMINAL-RINGLESS-200 AMP MAIN BREAKER INSTALLED

SERV.	CATALOG NUMBER	DESCRIPTION	CONNECTOR CU/AL		BY-PASS	DIMENSIONS			CONCENTRIC K.O.'S					FIG. #
			LINE	LOAD		D"	W"	H"	1	2	3	4	5	
OH	M400-PAR	UQFP-200 + (provision for UQFP)	#6-350	C.B.	LEVER	6 ¹ / ₈	9 ¹ / ₂	47 ¹ / ₈	2	2	2	1 ¹ / ₂	1 ¹ / ₂ ³ / ₄	2
UG	M400-PAR-UG	UQFP-200 + (provision for UQFP)	#6-350	C.B.	LEVER	6 ¹ / ₈	22 ¹ / ₈	36	2 ¹ / ₂	2 ¹ / ₂	4	2 ¹ / ₂	1 ¹ / ₂ ³ / ₄	1

Utility requirements for this equipment may vary. Always consult the serving utility for their requirements before ordering or installing equipment in this catalog.

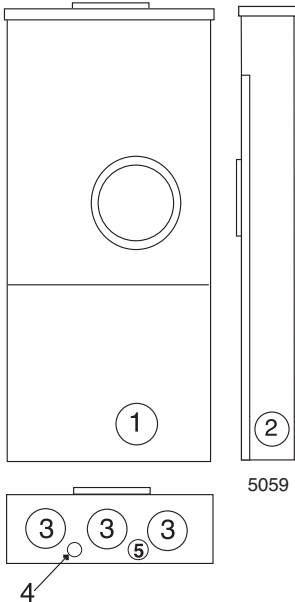
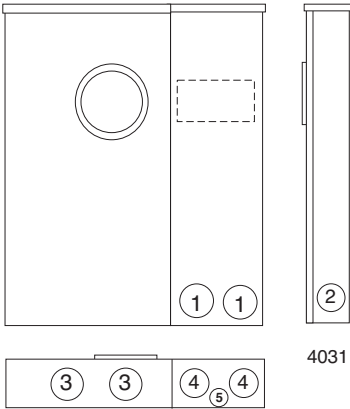


320 AMP-METER MAIN WITH BREAKERS-SIDE WIREWAY-1Ø3W-RINGLESS-240 VAC

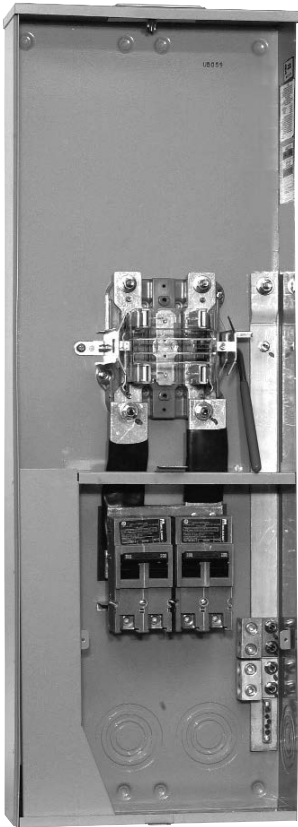
320 AMP CONTINUOUS
400 AMP MAX



U4031-O-2/200



5059



U5059-X-2/200

320 AMP—4 TERMINAL—METER MAIN WITH BREAKERS—RINGLESS

SERVICE	CATALOG NUMBER	HUB	CONNECTORS CU/AL		BY-PASS	DIMENSIONS			CONCENTRIC K.O.'S				
			LINE	LOAD		D"	W"	H"	1	2	3	4	5
UG	U4031-O-2/200	BLANK	3/8" x 16 STUD	#1/0-300	LEVER	5 ³ / ₄	25	30	3	3	4	3	1
OH/UG	U5059-X-2/200	C.P.	#4-600	#1/0-300	LEVER	4 ⁷ / ₈	15	42	3	3	3	1 ¹ / ₄	1 ¹ / ₂

CONNECTORS: The line wire section is supplied with 3/8"-16 studs with hex head nuts and captive Belleville washers.
For single lug connector kits, order as extra: **K1539** (350kcmil) or **K1540** (600kcmil). For twin: **K1350** (350 kcmil.)

BYPASS: The lever supplies clamping action on the meter spades and also operates the bypass device.

FIFTH TERMINAL: For field installed fifth terminal order catalog number **K3865**.

Utility requirements for this equipment may vary. Always consult the serving utility for their requirements before ordering or installing equipment in this catalog.



Commercial Pedestals

• Attractive • Easy to install • Secure • Cost effective

**Un-Strut
Your
Stuff...**



Milbank Commercial Pedestals are pad-mounted, weatherproof electrical enclosures consisting of a utility pull section with optional meter socket, and a customer section containing distribution and control equipment. Milbank

Commercial Pedestals are an attractive, secure, easy to install and cost-effective solution when underground remote site power distribution and control equipment is required, replacing unsightly and inefficient strut and backboard structures.



Strut and backboard design



Commercial Pedestal

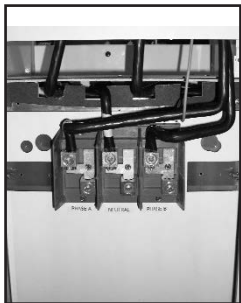
UL Listed as Industrial Control Equipment (File E113855).



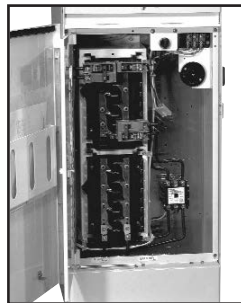
Ringless Socket



Ring-type Socket



Utility Lug Landing



Customer Interior

STANDARD FEATURES –COMMERCIAL PEDESTALS

- Type 3R rainproof, vandal-resistant cabinet of polyurethane powder-coated steel (aluminum or stainless steel also available)
- UL listed as enclosed industrial control equipment (UL508)
- Isolated, lockable & sealable utility metering & lug landing sections
- Lockable customer section for distribution & control equipment with internal deadfront
- Print pocket inside customer section door contains wiring schematics and installation instructions
- Most load centers are UL listed for use with various manufacturers' circuit breakers
- All stainless steel external hardware (screws, bolts, hinges, handles, hasps and sealing screws)
- Meets EUSERC 308 and other utility standards.



Utility requirements for this equipment may vary. Always consult the serving utility for their requirements before ordering or installing equipment in this catalog.

APPLICATIONS

These units are ideal for controlling and metering:

- Traffic signals
- Street lighting
- Irrigation / sprinkler systems
- Cell towers / telephone vaults
- Pump stations
- Temporary power for fairgrounds, swap meets, outdoor markets, portable offices, holiday lights, etc.
- Outdoor lighting for athletic fields, tennis and basketball courts, parking lots, landscaping and subdivision entrances, etc.



AVAILABLE FACTORY-INSTALLED OPTIONS

- Meter sockets – ring type or **ringless**, to 400 amp (unmetered pedestals also available)
- Main and branch breakers or T fuses
- Distribution – copper load centers & panel boards
- Clocks / timers / relays
- Photoelectric cells and controls
- Power receptacles – pin & sleeve, twist lock or straight blade
- Contactors – definite purpose, electrical or mechanically held, IEC and mercury types
- Surge protection & lightning arrestors
- Reserve inlet generator receptacle with interlocked circuit breakers
- Motor starters, relays
- Push button controls
- Thermostat controls, fans and heating strips
- Power blocks and terminal blocks
- Steel, aluminum and plywood back boards
- Transformers
- Interlock devices for circuit breakers
- Available in steel, aluminum (raw painted or anodized) or stainless steel construction with powder-coated finish available in 8 standard colors or special ordered RAL colors.
- Available for applications up to 400 amp, 120V, 208V, 240V, 277V, 480V – 1Ø or 3Ø.

ACCESSORIES



K3865

Fifth terminal kit for use with ringless meter sockets

105J

Fifth terminal kit for use with ring-type meter sockets



CP-TC7D

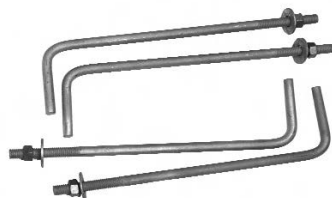
7-day time clock kit

CP-TC24H

24-hour time clock kit

CP-TCWIRE

Male four-pin connector and wiring harness for use with time clocks other than shown



CP-ABK5/8

Anchor bolt kit (includes four 5/8 - 13 x 18" anchor bolts)



CP-16PDMNT-CALT

Pedestal mounting base for 16" pedestal

CP-24PDMNT-CALT

Pedestal mounting base for 24" pedestal (includes mounting hardware)



CP-PE-HOA-3POS

HOA switch – for field installation



Commercial Pedestal Worksheet

Phone (816)483-5314 • Fax (816)483-6357

Please answer all of the questions as best as you can. Additional comments as to application and future requirements will help Milbank will determine the best product for your job.

Distributor: _____ Phone: _____ Fax: _____

Contact Name: _____ Application: _____

Milbank Representative: _____ Salesmen: _____

Job Name & Location: _____

Agency Specifications: (DOT-City-Other) _____

Unit Amperage: _____ Voltage: _____ Phase: _____ Wire: _____

Meter socket (200 Amp) RING-TYPE RINGLESS Fifth Terminal? NO YES (at _____ o'clock)

Meter socket (200 Amp) RING-TYPE RINGLESS Fifth Terminal? NO YES (at _____ o'clock)

Main breaker requirements: Amp: _____ Poles: _____ KAIC: _____

Main breaker requirements: Amp: _____ Poles: _____ KAIC: _____

Interior #1 0-42 circuits _____ Load center _____ Panel board _____ Metered? YES NO

Interior #2 0-42 circuits _____ Load center _____ Panel board _____ Metered? YES NO

Branch breakers: Amps: _____ Poles: _____ KAIC: _____ Label & Special requirements:

Qty _____ Breakers _____

Qty _____ Breakers _____

Qty _____ Breakers _____

Qty _____ Breakers _____

Qty _____ Breakers _____

Qty _____ Breakers _____

Controls:

Qty _____ Time Clock: 24 Hr _____ 7 Day _____ 365 Day Astro _____ Description: _____

Qty _____ Photo Electric Control Receptacle

Qty _____ Test switch: 2 Pos. _____ 3 Pos. _____ HOA Type _____ Other _____

Qty _____ Control Transformer _____ Voltage _____ VA Size (required for all 277/480v)

Contactors:

Type: Lighting - **LT** / Definite Purpose - **DP** / Mechanical Held - **MH** / Mercury - **MV** / IEC - **IC**

Qty _____ Type _____ Amps _____ Poles _____ Coil voltage _____ Other _____

Qty _____ Type _____ Amps _____ Poles _____ Coil voltage _____ Other _____

Qty _____ Type _____ Amps _____ Poles _____ Coil voltage _____ Other _____

Cabinet / Finish requirements: Alum - Untreated = **AO** / Alum Anodized = **AL** / Stainless Steel = **SS**

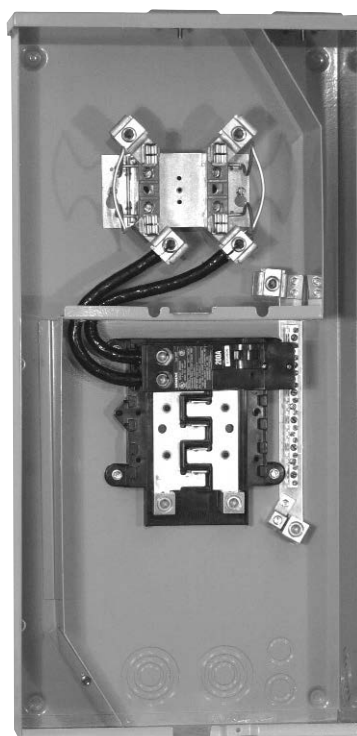
Aluminum - Painted = **A** / GALVANIZED STEEL PAINTED (STANDARD) _____ (specify paint below)

MINT GREEN (STANDARD) = **G** / Pine Green = **PG** / Dark Green = **DG** / Black = **BK** / Desert Tan = **DT**

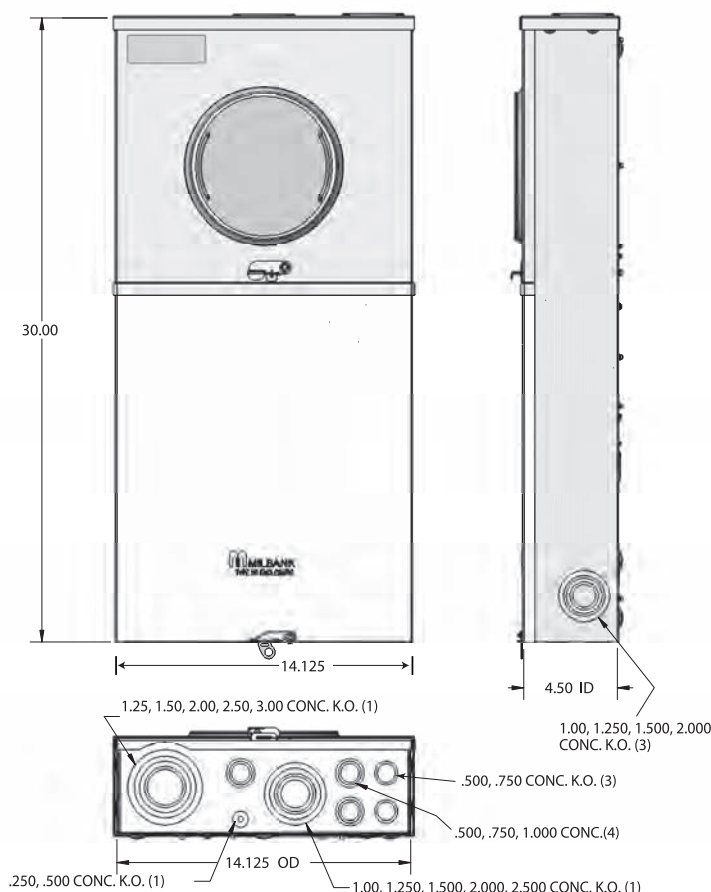
White = **W** / Gray = **P** / Summerland Gray = **SG** / Other (RAL finish number) _____

Other Requirements: _____

Please send any drawings, plans, specifications, and load/panel board schedules with worksheet



U5168-XTL-200 shown



SPECIFICATIONS

- Listed under UL 67 as “suitable only for use as service equipment”.
- 200 amp continuous ringless meter socket with or without horn type bypass. Accepts ANSI type C12.10 watt-hour meters. Overall ampere rating limited to main circuit breaker rating.
- For use on 120/240 volt single phase applications.
- Short circuit withstand rating 22K AIC. See wiring diagrams on back page for series rating compatibility.
- Type 3R enclosure constructed with G90 galvanized steel or 5052 aluminum.
- Light gray polyester powder coat finish.
- Service entrance overhead or underground. OH has up to 2-1/2” hub opening and UG has up to 3” knockout
- Load exit overhead or underground.
- Wire terminations accept copper or aluminum conductors:
Line & Neutral: # 6-350 kcmil Ground: #14-2/0
- Main circuit breaker: 100 amp type **Q** small frame, 150 & 200 amp type **QN** large frame.
- Branch circuit breaker ground and neutral: See wiring diagram on back page.
- Interior: 8 or 20 space copper buss accepts most manufacturers plug-in type circuit breakers. See wiring diagrams for acceptable manufacturers and models on back page.
- #6-350 kcmil sub-feed lugs provided on 8 circuit interior. Not available on 20 circuit interior.

METER MAIN ALL-IN-ONE WITH 8 CIRCUIT INTERIOR

<u>Catalog Number</u>	<u>Amp</u>	<u>Main</u>	<u>Term</u>	<u>By-Pass</u>	<u>Spaces</u>
♦ U5168-XTL-100*	100	100a 2p	4	None	10
♦ U5168-XTL-150	150	150a 2p	4	None	8
♦ U5168-XTL-200	200	200a 2p	4	None	8
U5168-XTL-100-KK*	100	100a 2p	4	Horn	10
U5168-XTL-150-KK	150	150a 2p	4	Horn	8
♦ U5168-XTL-200-KK	200	200a 2p	4	Horn	8
U5168-XTL-100-KK-5T*	100	100a 2p	5	Horn	10
♦ U5168-XTL-150-KK-5T	150	150a 2p	5	Horn	8
♦ U5168-XTL-200-KK-5T	200	200a 2p	5	Horn	8

METER MAIN ALL-IN-ONE WITH 20 CIRCUIT INTERIOR

<u>Catalog Number</u>	<u>Amp</u>	<u>Main</u>	<u>Term</u>	<u>By-Pass</u>	<u>Spaces</u>
U5268-XTL-150	150	150a 2p	4	None	20
♦ U5268-XTL-200	200	200a 2p	4	None	20
U5268-XTL-150-KK	150	150a 2p	4	Horn	20
♦ U5268-XTL-200-KK	200	200a 2p	4	Horn	20

* Amperage rating limited to main breaker rating. Interior has 10 branch circuit breaker provisions.

HUB: Supplied with two (2) closing plates packed inside. Order hubs separately from chart below.

FIFTH TERMINAL: For field installed 208Y/120 network service order K5T. Installs in the 9 o'clock position.

INTERLOCK KIT: For generator auxiliary circuit breaker interlock for large frame **QN** with small frame **Q** order **K5815**; for large frame **QN** with large frame **QN** order **K5820**; for small frame **Q** to small frame **Q** order **K5830**. For painted aluminum construction, change first three catalog letters to "UAP". Consult factory.

HUB CHART

Conduit size	1"	1-1/4"	1-1/2"	2"	2-1/2"
Catalog no.	A7514	A7515	A7516	A7517	A7518



MAIN CIRCUIT BREAKER CHART

Amperage	100	150	200
Catalog no.	Q2100H	QN2150RH	QN2200RH

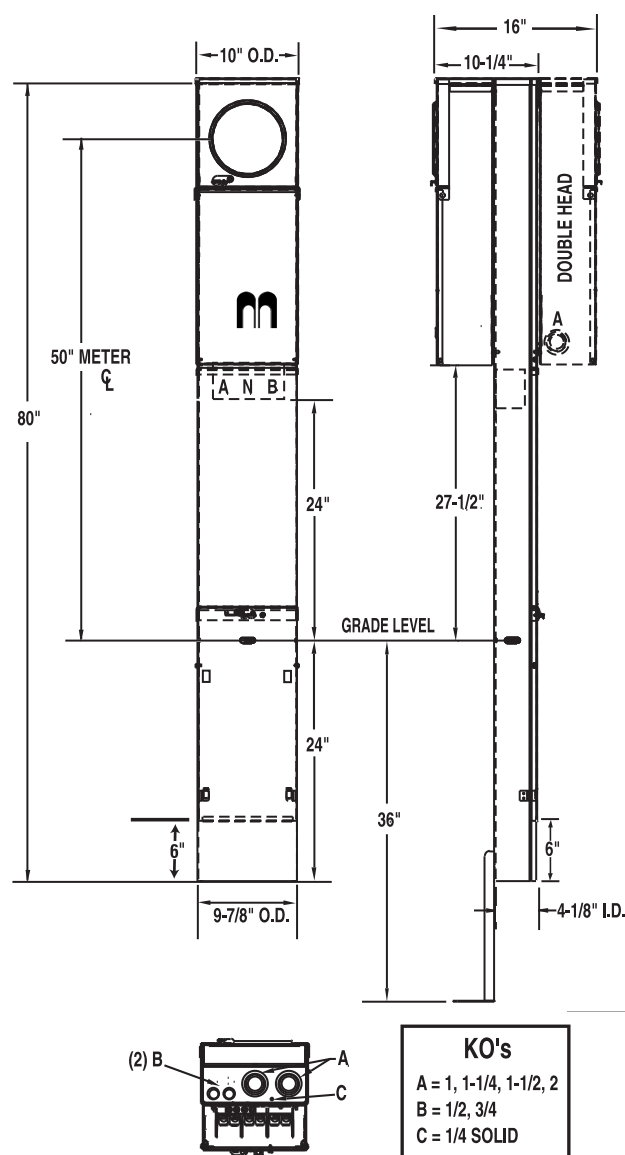


♦ Stock model – unit weight 37 lbs. – pallet quantity 24

Utility requirements for this equipment may vary. Always consult the serving utility for their requirements before ordering or installing equipment in this catalog.



U5136-0-200S with series wired
main & K5400-520GR kit



SPECIFICATIONS

- UL listed – conforms to EUSERC drawing number 307
- 200 amp maximum, 120/240 volt, single phase, three wire meter socket
- Ringless meter socket with horn bypass and stainless steel latch
- Short circuit withstand rating 22K AIC.
- Type 3R construction for durable outdoor use, one piece post – lockable and sealable
- Milbank grey polyester powder coat finish
- Wire terminations accept copper or aluminum conductors
- Line & Neutral: (2) #6-350 kcmil per phase
- Line Ground: (4) #14-1/0
- Load (CB): 2/0 to 300 kcmil per pole
- Load Neutral: (1) #6-350 kcmil
- Load Ground: (2) #14-1/0, (4) #14/6
- Milbank plug-in main circuit breaker. Available in 100, 125, 150 & 200 amp. Type UQFPH-M.
- Four-circuit plated copper interior accepts (2) 2-pole or (4) 1-pole standard plug-in type circuit breakers up to a total of 125 amps maximum. Acceptable manufacturers: Cutler-Hammer, GE or Siemens
- Factory or field installable receptacle bridge and receptacle / circuit breaker kits available. See Accessories.

SINGLE PEDESTAL (Direct Burial)

<u>CATALOG NUMBER</u>	<u>MAIN BREAKER</u>	<u>MAIN CB</u>	<u>BRANCH</u>	<u>WEIGHT (lbs)</u>
◆ U5136-O-100S	◆ UQFPH-M-100	100	4 Circuit	82
◆ U5136-O-200S	◆ UQFPH-M-200	200	4 Circuit	82
◆ U5136-O (parallel wired)	provision for UQFPH-M Series	—	4 Circuit	80

SINGLE PEDESTAL (Pad Mount)

U5138-O-200S	UQFPH-M-200	200	4 Circuit	82
U5138-O (parallel wired)	provision for UQFPH-M Series	—	4 Circuit	80




DOUBLE PEDESTAL (Direct Burial)

<u>CATALOG NUMBER</u>	<u>MAIN BREAKER</u>	<u>MAIN CB</u>	<u>BRANCH</u>	<u>WEIGHT (lbs)</u>
◆ U5137-O-100S	(2) UQFPH-M-100	100	4 Circuit	115
◆ U5137-O-200S	(2) UQFPH-M-200	200	4 Circuit	115
◆ U5137-O (parallel wired)	provision for (2) UQFPH-M Series	—	4 Circuit	111

DOUBLE PEDESTAL (Pad Mount)

U5139-O (parallel wired)	provision for (2) UQFPH-M Series	—	4 Circuit	111
---------------------------------	----------------------------------	---	-----------	-----

RECEPTACLE / CIRCUIT BREAKER KITS AND ACCESSORIES (ORDER SEPARATELY)

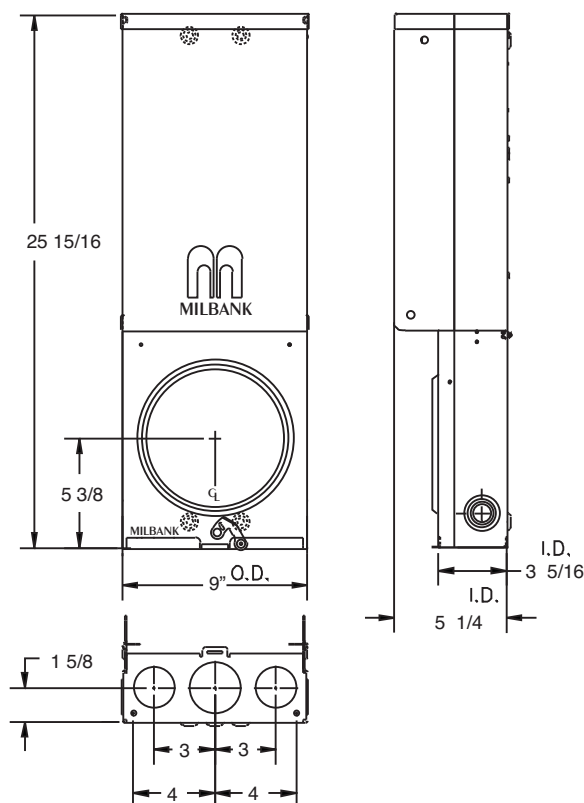
<u>CATALOG #</u>	<u>RECEPTACLE</u>	<u>CIRCUIT BREAKER</u>	<u>CONDUCTOR</u>	<u>CONFIGURATION</u>
◆ K5400-520GR	5-20R Duplex GFI	20 Amp, 1 Pole	12 Awg	 GFI Rec.
◆ K5400-TT30	TT30R	30 Amp, 1 Pole	10 Awg	
◆ K5400-1450	14-50R	50 Amp, 2 Pole	8 Awg	
◆ K5400-BRIDGE-1POS	Self-grounded one position receptacle bridge with hardware			
◆ K5400-BRIDGE-2POS	Self-grounded two position receptacle bridge with hardware			
◆ K5415	Stabilizer Foot with hardware			
◆ K5035	Pad Mount Kit with hardware for U5138/39 pad mount pedestals required			
◆ K5T	5th Terminal for 208y / 120 volt 3-wire service			
◆ K5193	Bus kit to convert series-wired main breaker to parallel			
◆ K5194	Wire kit to convert parallel-wired main breaker to series			
◆ K3450	Telephone / CATV mounting bracket (mounts left or right)			

- Up to two receptacle / circuit breaker kits can be field-installed in each powerhead. Order mounting bridge and receptacle kits separately from above. For three receptacles or factory-installed kits, contact factory.
 - Receptacle / circuit breaker kits include receptacle, circuit breaker, connected wire, cover plate and mounting screws. Other receptacle / circuit breaker kits available.
 - K5415 Stabilizer Foot sold separately. Recommended for double pedestals.
 - Pad mount pedestals require **K5035** pad mount kit. Order separately.
 - ◆ Stock item – availability subject to prior sale.
- Non-stock items – minimum order quantity required.

Utility requirements for this equipment may vary. Always consult the serving utility for their requirements before ordering or installing equipment in this catalog.



U4908-O-76GBGR

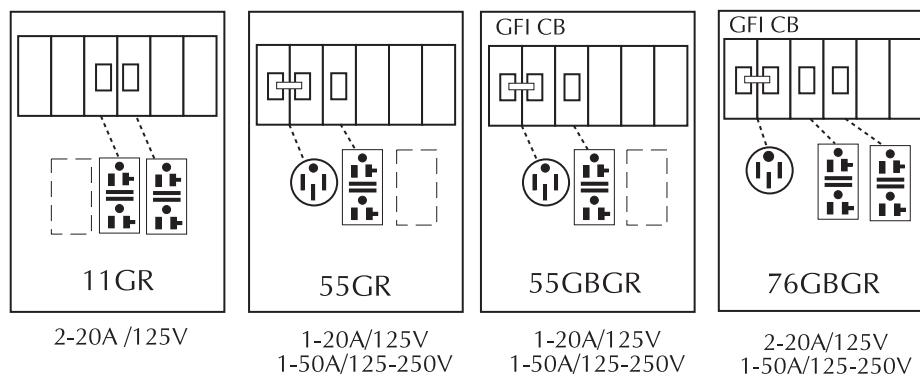


SPECIFICATIONS

- Available in **ringless** style (**U4908** series) or ring type (**U4909** series)
- UL Listed 100 Amp, 120/240 Volt – 1Ø Underground Service Power Outlet
- Short circuit current withstand rating 10K RMS symmetrical amperes
- Type 3R welded enclosure for durable outdoor use
- Enclosure constructed with galvanized 16 gauge steel
- ASA 61 grey polyester powder coat finish
- Convenient concentric knock-out configurations and mounting embosses
- Wire terminations accept copper or aluminum conductors
Service-Line & Neutral: (1) #6-2/0 Load Ground: (2) 1/0-#14 & (4) #6-#14
Load Neutral: (2) 1/0-#14 & (4) #6-#14 Service Ground: #2-#8
- Six circuit plated copper interior accepts standard plug-in type circuit breakers
- Three position **self-grounded** receptacle bridge accepts most standard NEMA receptacles with mounting plates
- Four terminal, ringless meter socket with stainless steel locking hasp. Ring type socket has aluminum **MR-2** snap action sealing ring
- Lockable hinge cover and deadfront are removable for installation and maintenance. Stay-open hinge cover has safety interlock on deadfront. Deadfront must be removed before hinge cover can be removed.
- Tamper proof fastening available

Utility requirements for this equipment may vary. Always consult the serving utility for their requirements before ordering or installing equipment in this catalog.

U4908 / U4909 STANDARD CONFIGURATIONS



ORDERING INFORMATION

CATALOG #	SOCKET TYPE	DESCRIPTION
◆ U4908-O	Ringless	Order base model and up to three factory installed receptacle/breaker kit separately from list below. Other kits available. Consult factory.
◆ U4908-O-11GR	Ringless	
◆ U4908-O-55GBGR	Ringless	
◆ U4909-O	Ring type	Order base model and up to three factory installed receptacle/breaker kit separately from list below. Other kits available. Consult factory.
◆ U4909-O-11GR	Ring type	
◆ U4909-O-55GBGR	Ring type	

RECEPTACLE & CIRCUIT BREAKER KITS

CATALOG NUMBER	AMP	BLADE	VOLTAGE	NEMA CONFIG.	TYPE	CIRCUIT BREAKER TYPE
◆ K5400-520	20	Straight	120	5-20	Std. Duplex	20 Amp 1 Pole
◆ K5400-520GR	20	Straight	120	5-20	GFI Duplex	20 Amp 1 Pole
◆ K5400-620	20	Straight	240	6-20	Single	20 Amp 2 Pole
◆ K5400-620GB	20	Straight	240	6-20	Single	20 Amp 2 Pole GFI
◆ K5400-1450	50	Straight	120/240	14-50	Single	30 Amp 2 Pole
◆ K5400-1450GB	50	Straight	120/240	14-50	Single	30 Amp 2 Pole GFI

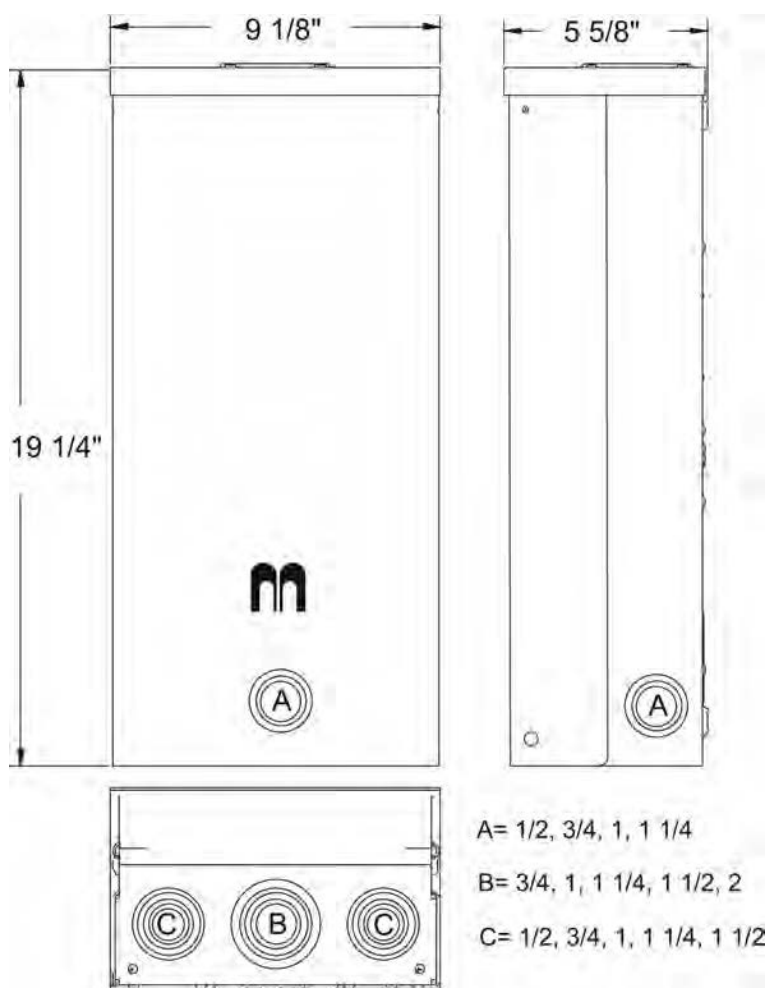
Flat cover may not close completely with twist locking devices in use.

Order slope-front 3R cover # 1107681 separately to use with twist lock type receptacles.

◆ Stock item – availability subject to prior sale.

Non-stock items – minimum order quantity required

Utility requirements for this equipment may vary. Always consult the serving utility for their requirements before ordering or installing equipment in this catalog.

**U5000-XL-75****SPECIFICATIONS:**

- UL Listed 125 Amp, 120/240 Volt, 1Ø Power Outlet.
- Short circuit current withstand rating 10K RMS symmetrical amperes.
- Type 3R welded enclosure for durable outdoor use.
- Enclosure constructed with galvanized 16 gauge steel.
- ASA 61 grey polyester powder coat finish.
- Convenient concentric knock-out configurations and mounting embosses.
- Hub opening with closure plate allows for meter retrofit.
- Wire terminations accept copper or aluminum conductors for loop feed wiring.
Line: (2) 1/0-#12 Ground: (2) 1/0-#14 & (4) #6-#14 Neutral: (2) 1/0-#14 & (4) #6-#14
- Six circuit plated copper interior accepts standard plug-in type circuit breakers. Rated up to 125 amps.
- Three position **self-grounded** receptacle bridge accepts most standard NEMA receptacles with mounting plates.
- Components factory wired with stranded copper wire.
- Lockable hinge cover and dead front are removable for installation and maintenance. Stay-open hinge cover has safety interlock on dead front. Dead front cover must be removed before hinge cover can be removed.
- Low wattage, 120 Volt fluorescent site light available. Factory or field installable.
- Unit weight: 21 lbs.

Utility requirements for this equipment may vary. Always consult the serving utility for their requirements before ordering or installing equipment in this catalog.

U5000 STANDARD MODELS

CATALOG #	RECEPTACLES		CIRCUIT BREAKERS	
◆ U5000-XL-41	(1) TT30R (1) 5-20R GFI		(1) 30A, 1P, 120V (1) 20A, 1P, 120V	
◆ U5000-XL-332	(2) TT30R (1) 5-20R GFI		(2) 30A, 1P, 120V (1) 20A, 1P, 120V	
◆ U5000-XL-55	(1) 14-50R (1) 5-20R GFI		(1) 50A, 2P, 120/240V (1) 20A, 1P, 120V	
◆ U5000-XL-75	(1) 14-50R (1) TT30R (1) 5-20R GFI		(1) 50A, 2P, 120/240V (1) 30A, 1P, 120V (1) 20A, 1P, 120V	
U5000-XL-75GB	(1) 14-50R (1) TT30R (1) 5-20R		(1) 50A, 2P, 120/240V (1) 30A, 1P, 120V (1) 20A, 1P, 120V, GFI	

U5000 STANDARD BASE MODEL

Order up to (3) receptacle / breaker kits. Sold separately for field installation.

CATALOG #	DESCRIPTION
-----------	-------------

◆ U5000-XL	Base model without receptacles or circuit breakers.
-------------------	---

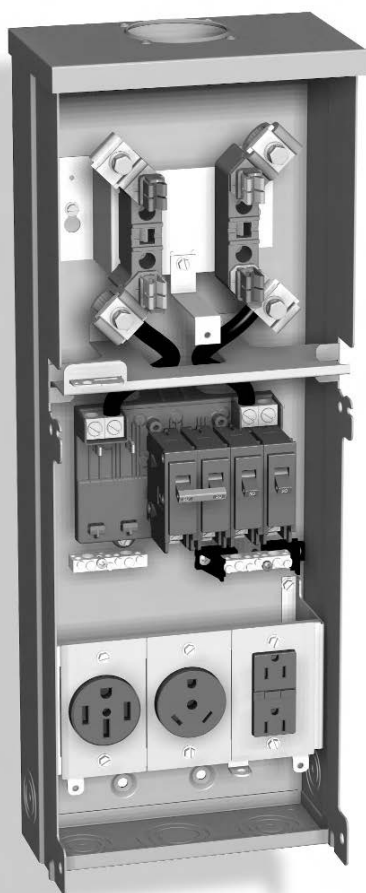
RECEPTACLE & CIRCUIT BREAKER KITS

CATALOG #	RECEPTACLES	CIRCUIT BREAKERS	CONDUCTORS	CONFIGURATION
◆ K5400-520GR	5-20R Duplex GFI	20 Amp, 1 Pole	12 Awg	GFI Rec.
K5400-520GB	5-20R Duplex	20 Amp, 1 Pole GFI	12 Awg	GFI CB
◆ K5400-TT30	TT30R	30 Amp, 1 Pole	10 Awg	
K5400-TT30GB	TT30R	30 Amp, 1 Pole GFI	10 Awg	GFI CB
◆ K5400-1450	14-50R	50 Amp, 2 Pole	8 Awg	

◆ **Stock model. Availability subject to prior sale.**

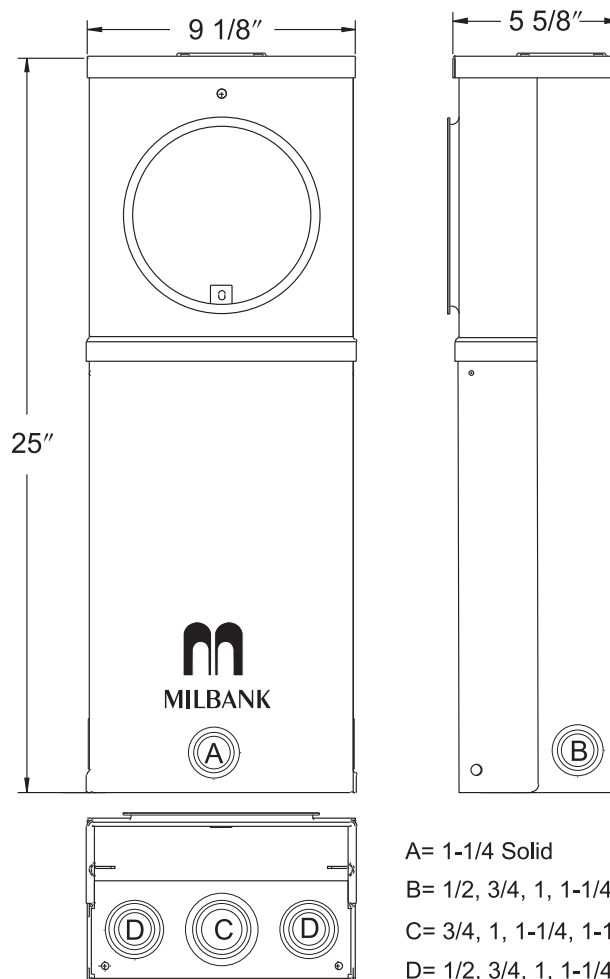
Note: 20 Amp GFI required at each RV site by UL and NEC 551-71

Utility requirements for this equipment may vary. Always consult the serving utility for their requirements before ordering or installing equipment in this catalog.



U5100-XL-75

Loop
feed not
available.



A= 1-1/4 Solid

B= 1/2, 3/4, 1, 1-1/4

C= 3/4, 1, 1-1/4, 1-1/2, 2

D= 1/2, 3/4, 1, 1-1/4, 1-1/2

SPECIFICATIONS

- UL Listed 125 Amp, 120/240 Volt—1Ø Power Outlet.
- This is an **overhead only** unit.
- Short circuit current withstand rating 10K RMS symmetrical amperes.
- Type 3R welded enclosure for durable outdoor use.
- Enclosure constructed with galvanized 16 gauge steel.
- ASA 61 grey polyester powder coat finish.
- Convenient concentric knock-out configurations and mounting embosses.
- Hub opening with closure plate.
- Wire terminations accept copper or aluminum conductors. Loop feed not available.
Line: (1) #6-250 kcmil Ground: (2) 1/0-#14 & (4) #6-#14 Neutral: (2) 1/0-#14 & (4) #6-#14
- Six circuit plated copper interior accepts standard plug-in type circuit breakers. Rated up to 125 amps.
- Three position **self-grounded** receptacle bridge accepts most standard NEMA receptacles with mounting plates.
- Four terminal, drawn ring type meter socket with aluminum sealing ring. **Ringless** meter socket available. Use **U5101** prefix.
- Components factory wired with stranded copper wire.
- Lockable hinge cover and dead front are removable for installation and maintenance. Stay-open hinge cover has safety interlock on dead front. Dead front must be removed before hinge cover can be removed.
- Low wattage, 120 Volt fluorescent site light available. Factory or field installable.
- Unit weight: 26 lbs.

Utility requirements for this equipment may vary. Always consult the serving utility for their requirements before ordering or installing equipment in this catalog.

U5100 STANDARD MODELS

CATALOG #	RECEPTACLES		CIRCUIT BREAKERS	
◆ U5100-XL-41	(1) TT30R (1) 5-20R GFI		(1) 30A, 1P, 120V (1) 20A, 1P, 120V	
◆ U5100-XL-55	(1) 14-50R (1) 5-20R GFI		(1) 50A, 2P, 120/240V (1) 20A, 1P, 120V	
◆ U5100-XL-75	(1) 14-50R (1) TT30R (1) 5-20R GFI		(1) 50A, 2P, 120/240V (1) 30A, 1P, 120V (1) 20A, 1P, 120V	
U5100-XL-75GB	(1) 14-50R (1) TT30R (1) 5-20R		(1) 50A, 2P, 120/240V (1) 30A, 1P, 120V (1) 20A, 1P, 120V, GFI	
U5100-XL-552GR	(2) 14-50R (1) 5-20R GFI		(2) 50A, 2P, 120/240V (1) 20A, 1P, 120V, GFI	

U5100 STANDARD BASE MODELS

Order up to (3) receptacle / breaker kits. Sold separately for field installation.

CATALOG #	DESCRIPTION
◆ U5100-XL	Ring-type base model without receptacles or circuit breakers.
◆ U5101-XL	Ringless-type base model without receptacles or circuit breakers.

RECEPTACLE & CIRCUIT BREAKER KITS

CATALOG #	RECEPTACLES	CIRCUIT BREAKERS	CONDUCTORS	CONFIGURATION
◆ K5400-520GR	5-20R Duplex GFI	20 Amp, 1 Pole	12 Awg	GFI Rec.
K5400-520GB	5-20R Duplex	20 Amp, 1 Pole GFI	12 Awg	GFI CB
◆ K5400-TT30	TT30R	30 Amp, 1 Pole	10 Awg	
K5400-TT30GB	TT30R	30 Amp, 1 Pole GFI	10 Awg	
◆ K5400-1450	14-50R	50 Amp, 2 Pole	8 Awg	

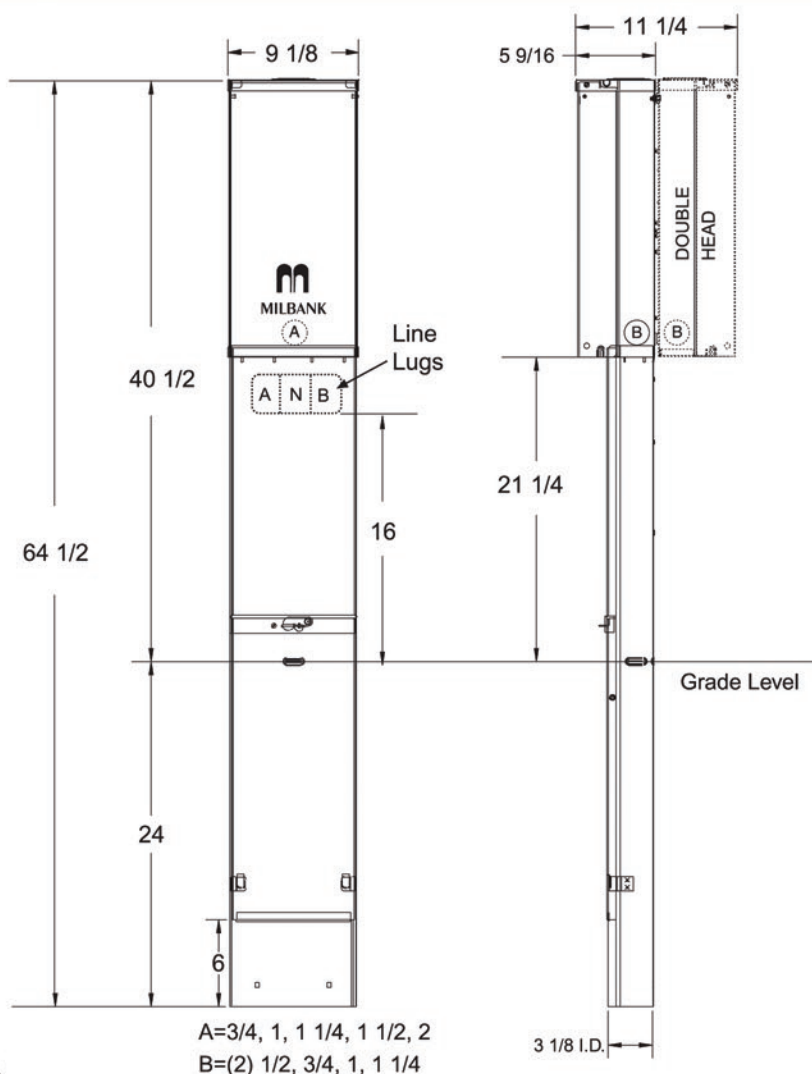
◆ Stock model. Availability subject to prior sale.

Note: 20 Amp GFI required at each RV site by UL and NEC 551-71

Utility requirements for this equipment may vary. Always consult the serving utility for their requirements before ordering or installing equipment in this catalog.



U5200-XL-75
DIRECT BURIAL



SPECIFICATIONS

- UL Listed 125 Amp, 120/240 Volt—1Ø Power Outlet.
- Short circuit current withstand rating 10K RMS symmetrical amperes.
- Type 3R welded enclosure for durable outdoor use.
- Enclosure constructed with galvanized 16 gauge steel.
- Direct burial or pad mounted post constructed with 16 gauge galvanized steel. Two removable front covers for ease of installation. Accepts up to (3) 2 1/2" conduits.
- ASA 61 grey polyester powder coat finish.
- Convenient concentric knock-out configurations. See note A & B above.
- Hub opening with closure plate allows for meter retrofit.
- Wire terminations accept copper or aluminum conductors for loop feed wiring.
Line: (2) #6-350 kcmil Ground: (2) #14-2/0 Neutral: (2) #6-350 kcmil
- Six circuit plated copper interior accepts standard plug-in type circuit breakers. Rated up to 125 amps.
- Three position **self-grounded** receptacle bridge accepts most standard NEMA receptacles with mounting plates.
- Components factory wired with stranded copper wire.
- Lockable hinge cover and dead front are removable for installation and maintenance. Stay-open hinge cover has safety interlock on dead front. Dead front must be removed before hinge cover can be removed.
- Low wattage, 120 Volt fluorescent site light available. Factory or field installable.
- Unit weight: Single—48 lbs. Double—70 lbs.

Utility requirements for this equipment may vary. Always consult the serving utility for their requirements before ordering or installing equipment in this catalog.

U5200 STANDARD MODELS

SINGLE HEAD CATALOG #	DBL. HEAD CATALOG#	RECEPTACLES	CIRCUIT BREAKERS
◆ U5200-XL-41	◆ U5220-XL-41	(1) TT30R (1) 5-20R GFI	(1) 30A, 1P, 120V (1) 20A, 1P, 120V
U5200-XL-41GB		(1) TT30R (1) 5-20R	(1) 30A, 1P, 120V (1) 20A, 1P, 120V, GFI
◆ U5200-XL-332		(2) TT30R (1) 5-20R GFI	(2) 30A, 1P, 120V (1) 20A, 1P, 120V
◆ U5200-XL-75	◆ U5220-XL-75	(1) 14-50R (1) TT30R (1) 5-20R GFI	(1) 50A, 2P, 120/240V (1) 30A, 1P, 120V (1) 20A, 1P, 120V
U5200-XL-75GB		(1) 14-50R (1) TT30R (1) 5-20R	(1) 50A, 2P, 120/240V (1) 30A, 1P, 120V (1) 20A, 1P, 120V, GFI

U5200 STANDARD BASE MODELS

Order up to (3) receptacle / breaker kits. Sold separately for field installation.

CATALOG #	DESCRIPTION
◆ U5200-XL	Single head base model on direct burial post.
◆ U5210-XL	Single head base model on pad mount post. Order K5410 pad mount base separately.
◆ U5220-XL	Double head base model on direct burial post.
◆ U5230-XL	Double head base model on pad mount post. Order K5410 pad mount base separately.

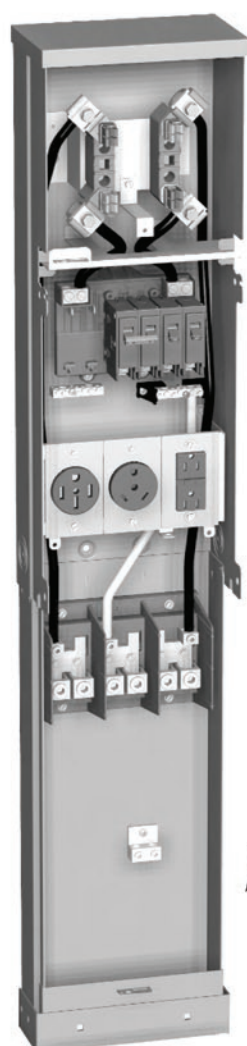
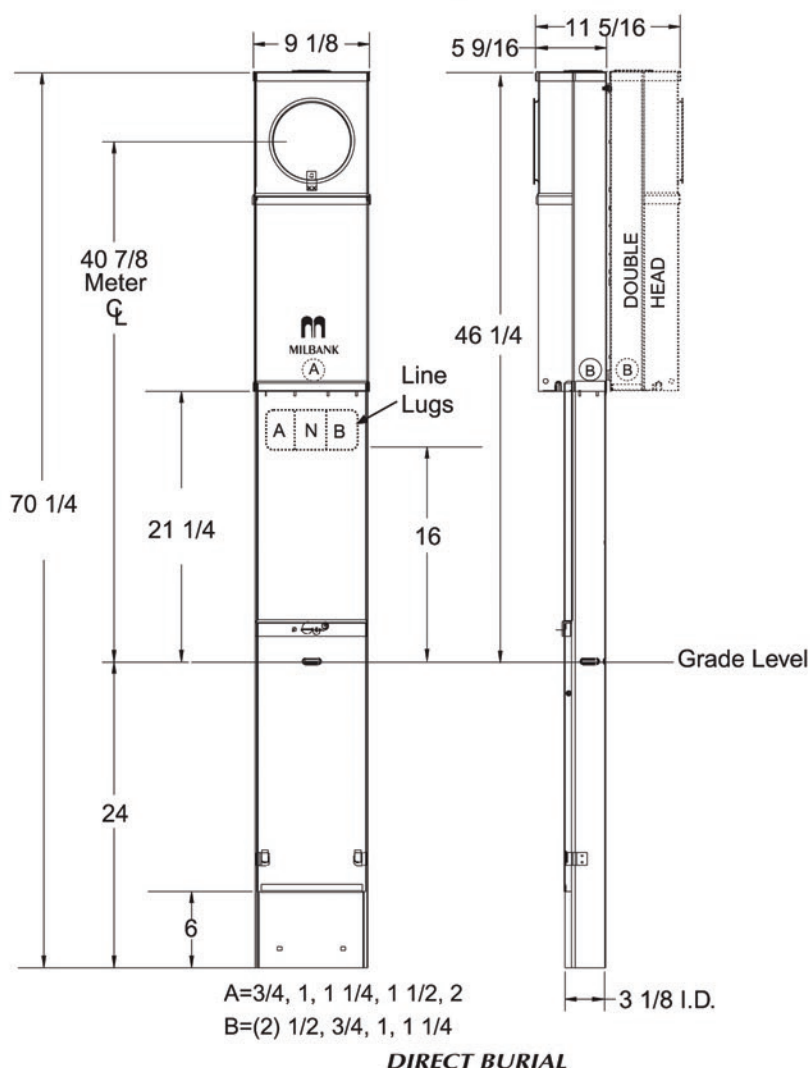
RECEPTACLE & CIRCUIT BREAKER KITS

CATALOG #	RECEPTACLES	CIRCUIT BREAKERS	CONDUCTORS	CONFIGURATION
◆ K5400-520GR	5-20R Duplex GFI	20 Amp, 1 Pole	12 Awg	GFI Rec.
K5400-520GB	5-20R Duplex	20 Amp, 1 Pole GFI	12 Awg	GFI CB
◆ K5400-TT30	TT30R	30 Amp, 1 Pole	10 Awg	TT30R
K5400-TT30GB	TT30R	30 Amp, 1 Pole GFI	10 Awg	TT30R GFI
◆ K5400-1450	14-50R	50 Amp, 2 Pole	8 Awg	14-50R

◆ Stock model. Availability subject to prior sale.

Note: 20 Amp GFI required at each RV site by UL and NEC 551-71

Utility requirements for this equipment may vary. Always consult the serving utility for their requirements before ordering or installing equipment in this catalog.


**U5310-O-75
PAD MOUNT**


SPECIFICATIONS

- UL Listed 125 Amp, 120/240 Volt—1Ø Power Outlet.
- Short circuit current withstand rating 10K RMS symmetrical amperes.
- Type 3R welded enclosure for durable outdoor use.
- Enclosure constructed with galvanized 16 gauge steel.
- Direct burial or pad mounted post constructed with 16 gauge galvanized steel. Two removable front covers for ease of installation. Accepts up to (3) 2 1/2" conduits.
- ASA 61 grey polyester powder coat finish.
- Wire terminations accept copper or aluminum conductors for loop feed wiring.
 Line: (2) #6-350 kcmil Ground: (2) #14-2/0 Neutral: (2) #6-350 kcmil
- Six circuit plated copper interior accepts standard plug-in type circuit breakers. Rated up to 125 amps.
- Three position **self-grounded** receptacle bridge accepts most standard NEMA receptacles with mounting plates.
- Four terminal, drawn ring type meter socket with aluminum sealing ring.
- Components factory wired with stranded copper wire.
- Lockable hinge cover and dead front are removable for installation and maintenance. Stay-open hinge cover has safety interlock on dead front. Dead front must be removed before hinge cover can be removed.
- Low wattage, 120 Volt fluorescent site light available. Factory or field installable.
- Unit weight: Single—53 lbs. Double—80 lbs.

Utility requirements for this equipment may vary. Always consult the serving utility for their requirements before ordering or installing equipment in this catalog.

U5300 STANDARD MODELS

SINGLE HEAD CATALOG #	DBL. HEAD CATALOG#	RECEPTACLES	CIRCUIT BREAKERS
◆U5300-O-41		(1) TT30R (1) 5-20R GFI	(1) 30A, 1P, 120V (1) 20A, 1P, 120V
◆U5300-O-55		(1) 14-50R (1) 5-20R GFI	(1) 50A, 2P, 120/240V (1) 20A, 1P, 120V
◆U5300-O-75	◆U5320-O-75	(1) 14-50R (1) TT30R (1) 5-20R GFI	(1) 50A, 2P, 120/240V (1) 30A, 1P, 120V (1) 20A, 1P, 120V
U5300-O-552GR		(2) 14-50R (1) 5-20R GFI	(2) 50A, 2P, 120/240V (1) 20A, 1P, 120V

U5300 STANDARD BASE MODELS

Order up to (3) receptacle / breaker kits. Sold separately for field installation.

CATALOG #	DESCRIPTION
◆U5300-O	Single head base model on direct burial post.
◆U5310-O	Single head base model on pad mount post. Order K5410 pad mount base separately.
◆U5320-O	Double head base model on direct burial post.
◆U5330-O	Double head base model on pad mount post. Order K5410 pad mount base separately.

RECEPTACLE & CIRCUIT BREAKER KITS

CATALOG #	RECEPTACLES	CIRCUIT BREAKERS	CONDUCTORS	CONFIGURATION
◆K5400-520GR	5-20R Duplex GFI	20 Amp, 1 Pole	12 Awg	GFI Rec.
K5400-520GB	5-20R Duplex	20 Amp, 1 Pole GFI	12 Awg	GFI CB
◆K5400-TT30	TT30R	30 Amp, 1 Pole	10 Awg	GFI Rec.
K5400-TT30GB	TT30R	30 Amp, 1 Pole GFI	10 Awg	GFI CB
◆K5400-1450	14-50R	50 Amp, 2 Pole	8 Awg	GFI Rec.

◆ Stock model. Availability subject to prior sale.

Note: 20 Amp GFI required at each RV site by UL and NEC 551-71

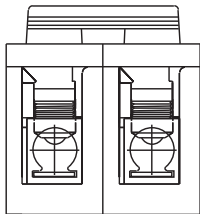
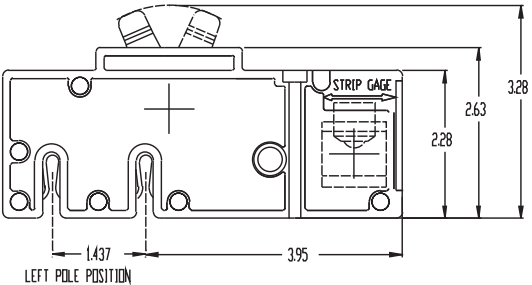
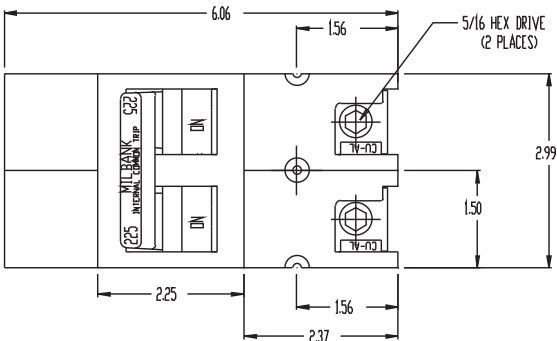
Utility requirements for this equipment may vary. Always consult the serving utility for their requirements before ordering or installing equipment in this catalog.



UQFP



UQFP-M



200 AMP FRAME—PLUG-IN—10,000 AIC & 22,000 AIC
TWO-POLE—COMMON TRIP

AMPS	10K AIC PLUG-IN	22K AIC PLUG-IN	10K AIC PLUG-IN	22K AIC PLUG-IN	WIRE RANGE	
					CU	AL
100	UQFP-100	UQFPH-100	UQFP-M-100	UQFPH-M-100	#3-#1	#1-1/0
125	UQFP-125	UQFPH-125	UQFP-M-125	UQFPH-M-125	#3-#1	#1-1/0
150	UQFP-150	UQFPH-150	UQFP-M-150	UQFPH-M-150	1/0-300	2/0-300
175	UQFP-175	UQFPH-175	UQFP-M-175	UQFPH-M-175	1/0-300	2/0-300
200	UQFP-200	UQFPH-200	UQFP-M-200	UQFPH-M-200	1/0-300	2/0-300

UL LISTED: For use with 60°C or 75°C wire.

UQFP: For parallel main circuit breaker applications

UQFP-M: For series main circuit breaker applications. Split load tab features allow for feed through capability.

STANDARD PACKAGING: 5 units per 16 lb. carton.

Utility requirements for this equipment may vary. Always consult the serving utility for their requirements before ordering or installing equipment in this catalog.



UQFB-X1



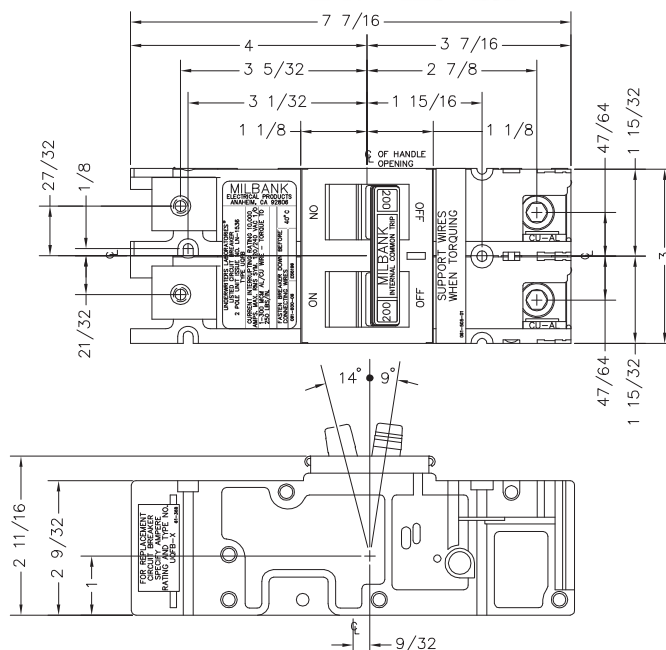
UQFB-X



UQFB



UQFB-X-MOD



**200 AMP FRAME—BOLT-ON—10K AIC & 22K AIC
TWO-POLE—COMMON TRIP**

AMPS	10K AIC BOLT-ON	22K AIC BOLT-ON	10K AIC BOLT-ON	WIRE RANGE	
				CU	AL
100	UQFB-100	UQFBH-100	UQFB-100-X1	#3-#1	#1-1/0
125	UQFB-125	UQFBH-125	UQFB-125-X1	#3-#1	#1-1/0
150	UQFB-150	UQFBH-150	UQFB-150-X1	1/0-300	2/0-300
175	UQFB-175	UQFBH-175	UQFB-175-X1	1/0-300	2/0-300
200	UQFB-200	UQFBH-200	UQFB-200-X1	1/0-300	2/0-300

UL LISTED: For use with 60°C or 75°C wire.

UQFB: (2) 1/0-300 kcmil lugs provided on load and line side (cable-in, cable-out.)

UQFB3: Three pole available. Consult factory.

UQFB-X: (2) 1/0-300 kcmil lugs provided on load side and (2) line bar bus connections on line side.

UQFB-M: For series main circuit breaker applications. Split load tab features allow for feed through capability.

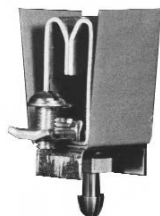
UQFB-X-MOD: Replacement circuit breaker with line barriers removed.

STANDARD PACKAGING: 5 units per 16 lb. carton.

Utility requirements for this equipment may vary. Always consult the serving utility for their requirements before ordering or installing equipment in this catalog.

FIFTH TERMINALS

Consult factory for 5th terminal selection



100-200 amp
"PLUG-IN" FIFTH TERMINAL
5T8K2



HEAVY DUTY JAW
CLAMPING
K3865
(K3866 w/out neutral wire)



200 amp
FIFTH TERMINAL
K5T
(New style block with square hole)

SEALING RINGS



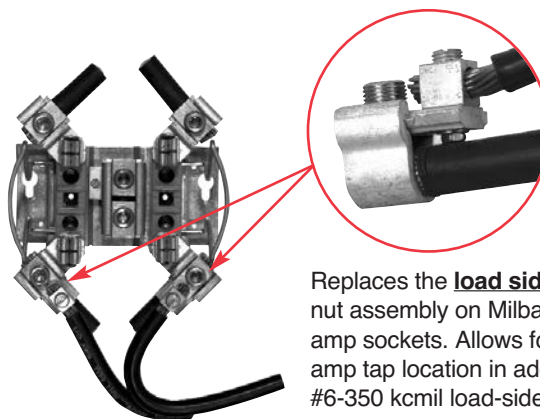
SNAP ACTION
MR-2



SCREW TYPE
(Stainless Steel)
MR-4

STAINLESS STEEL
MR2-SS

LOAD TAP CONNECTORS (3 per set)



Replaces the load side slide-in nut assembly on Milbank 200 amp sockets. Allows for a 100 amp tap location in addition to the #6-350 kcmil load-side connector.

K5022 Includes Safety Barrier Extensions – for applications over 300 VAC.

K4977-INT INTERNAL HEX **K5022-INT** INTERNAL HEX

BYPASS LINK

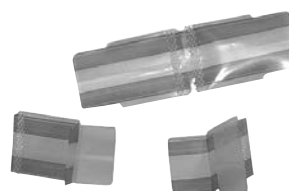


K8180
(Bypass links sold in pairs)

DISCONNECT SLEEVE *

M5-144

(*NOT TO BE USED WITH LEVER
BYPASS SOCKETS)



INTERCHANGEABLE UNIT HUBS



HUB ADAPTER PLATE
(Converts 4" opening to 2½")
S8324



**SMALL "RL"
OPENING (STANDARD)**

SUFFIX	SIZE	MILBANK NO.
WL	1"	A7514
YL	1¼"	A7515
ZL	1½"	A7516
DL	2"	A7517
EL	2½"	A7518

**LARGE "R"
OPENING (HEAVY DUTY)**

SUFFIX	SIZE	MILBANK NO.
F	3"	A8110
G	3½"	A8111
H	4"	A8112



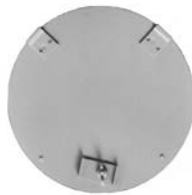
**REMOVABLE HUB
CLOSING PLATE**

DESCRIPTION	SUFFIX	CAT. #
STANDARD (for -RL opening)	-XL	A7551
LARGE (for -R opening)	-X	A9064

CLOSING COVERS



METER CLOSING PLATE
(Ring type / **Ringless**)
6003 (Gray Plastic)
6116 (Clear Plastic)



METAL CLOSING PLATE
(For **Ringless** sockets)
CP-21
(For Ring type sockets)
MCP

HUB SUFFIX CHART

O	Plain Top	WL	1"	For -RL Opening
RL	Small Hub Opening	YL	1¼"	For -RL Opening
R	Large Hub Opening	ZL	1½"	For -RL Opening
XL	Small Closing Plate	DL	2"	For -RL Opening
X	Large Closing Plate	EL	2½"	For -RL Opening
RXL	Large Hub Opening adapted to small Closing Plate	F	3"	For -R Opening
RRL	Large Hub Opening adapted to small Hub Opening	G	3½"	For -R Opening
		H	4"	For -R Opening

CONNECTOR KITS



SINGLE

For use with 3/8"-16 stud
type units only



TWIN

SUFFIX CATALOG # (3 per set) – 1 Ø

K1	K1539	6-350
K3	K1540	4-600 or (2) 1/0-250
K3L	K1540L	4-600 or (2) 1/0-250 Non-rotating

SUFFIX CATALOG # (4 per set) – 3 Ø

K5	K3082	6-350
K7	K3441	4-600 or (2) 1/0-250

SUFFIX CATALOG # (3 per set) – 1 Ø

K2	K1350	6-350
K2L	K1350L	6-350 Non-rotating
K4	K1541	4-600

SUFFIX CATALOG # (4 per set) – 3 Ø

K6	K3442	6-350
K8	K3083	4-600

Utility requirements for this equipment may vary. Always consult the serving utility for their requirements before ordering or installing equipment in this catalog.

MAXIMUM NUMBER OF CONDUCTORS IN CONDUIT*

TYPE	CONDUCTOR SIZE AWG,MCM	CONDUIT TRADE SIZES (INCHES)									
		1/2	3/4	1	1 1/4	1 1/2	2	2 1/2	3	3 1/2	4
RHW & RHH (without outer covering) THW	14	6	10	16	29	40	65	93	143	192	
	12	4	8	13	24	32	53	76	117	157	
	10	4	6	11	19	26	43	61	95	127	163
	8	1	3	5	10	13	22	32	49	66	85
	6	1	2	3	7	10	16	23	36	48	62
TW THW FEPB (6 thru 2), RHW and RHH (without outer covering) RH, THHW	3	1	1	2	4	6	10	15	23	31	40
	1/0		1	1	2	3	5	8	12	16	21
	2/0		1	1	1	3	5	7	10	14	18
	3/0		1	1	1	2	4	6	9	12	15
	4/0		1	1	1	3	5	7	10	13	
	250			1	1	1	2	4	6	8	10
	300			1	1	1	2	3	5	7	9
	350			1	1	1	3	4	6	8	
	400			1	1	1	2	4	5	7	
	500			1	1	1	1	3	4	6	
	600					1	1	1	3	4	5
	700					1	1	1	2	3	4
	750					1	1	1	2	3	4

*This table is for concentric stranded conductors only. For cables with compact conductors refer to N.E.C.

SHORT CIRCUIT CURRENT RATING PER UL 414 TABLE 14.1

SHORT CIRCUIT CURRENT RATING:
WHEN USED IN CONJUNCTION WITH THE FOLLOWING
OVERCURRENT PROTECTIVE DEVICE,
METER SOCKET IS RATED FOR USE ON A CIRCUIT
CAPABLE OF DELIVERING NOT MORE THAN THE
FOLLOWING RMS SYMMETRICAL AMPERES:

RMS SYM. AMPS,MAX.	MAX. OVERCURRENT PROTECTION,AMPS	VOLTS MAX.	RMS SYM. AMPS,MAX.	MAX. OVERCURRENT PROTECTION,AMPS	VOLTS MAX.
200,000	200 CLASS J OR T FUSE	600	42,000	200 CLASS RK1 FUSE	480
100,000	400 CLASS J OR T FUSE	600	25,000	100 CIRCUIT BREAKER	240
100,000	100 CLASS RK5 FUSE	600	22,000	1Ø 125 CIRCUIT BREAKER	240
50,000	600 CLASS T(300V) FUSE	300	18,000	200 CIRCUIT BREAKER	240
			14,000	ANY CIRCUIT BREAKER	600

WATTHOUR METER NOT INCLUDED IN SHORT-CIRCUIT CURRENT RATING.

Note: Prior to purchase, verify amps, voltage and type of device used to protect circuit per this chart.

**SEE CATALOG PAGES FOR APPLICABLE DEVICES.
THIS CHART DOES NOT APPLY TO ALL PRODUCTS.**

Overall ampere ratings of UL Listed Milbank multiple position meter sockets are based on **1993 N.E.C. Manual article 220-32** and **ANSI / UL-414** (except where restricted by line connector size.) These requirements provide for a diversity factor / demand factor being utilized in determining the overall (main bus / lug) rating of a gang socket. All Milbank UL Listed gang sockets meet or exceed these diversity factor/demand factor requirements. Standard overall ampacity ratings for UL Listed and non UL Listed gang sockets are as shown in the chart below. Ampere ratings of meter sockets are based on the meter socket being wired with 75° C insulated wire conductor, sized in accordance with **Table 310-16** of the **National Electric Code**.

GANG SOCKET OVERALL AMPACITIES

NO. OF METER POSITIONS	100A / POS. AMPACITY	125A / POS. AMPACITY	150A / POS. AMPACITY	200A / POS. AMPACITY
2	200A	200A	200A	200A
3	200A	225A	225A	270A
4	200A	250A	270A	360A
5	225A	285A	338A	450A
6	270A	330A	396A	528A

All meter sockets are 600 volt rated unless otherwise noted.

All meter socket ampacity ratings are continuous duty unless otherwise noted.

*CU		AL or Cu-Clad AL	
A	B	A	C
18	—	—	—
16	—	—	—
14	20+	—	—
12	25+	12	20+
10	35+	10	30+
8	50	8	40
6	65	6	50
4	85	4	65
3	100	3	75
2	115	2	90
1	130	1	100
1/0	150	1/0	120
2/0	175	2/0	135
3/0	200	3/0	155
4/0	230	4/0	180
250	255	250	205
300	285	300	230
350	310	350	250
400	335	400	270
500	380	500	310
600	420	600	340
700	460	700	375
750	475	750	385

* Allowable ampacities of insulated
Copper & Aluminum conductors
(3W in conduit) 75°C (167°F)

† Unless otherwise permitted elsewhere in the Code, the overcurrent protection for conductor types marked with an obelisk (†) shall not exceed 15 amps for 14 AWG, 20 amps for 12 AWG, and 30 amps for 10 AWG copper; or 15 amps for 12 AWG and 25 amps for 10 AWG aluminum and copper-clad aluminum after any correction factors for ambient temperature and number of conductors have been applied.

A = Size: AWG/MCM

B = Ampere Rating for Insulation
Types: FEPW, RH, RHW, THW,
THWN, XHHW, USE, 2W.

C = Ampere Rating for Insulation
Types: RH, RHW, THW, THWN,
XHHW, USE

(Per NEC table 310-16)

AMPACITY CORRECTION FACTORS

AMBIENT TEMP.C°	CORRECTION FACTOR	AMBIENT TEMP.F°
21 - 25	1.05	70 - 77
26 - 30	1.00	79 - 86
31 - 35	.94	88 - 95
36 - 40	.88	97 - 104
41 - 45	.82	106 - 113
46 - 50	.75	115 - 122
51 - 55	.67	124 - 131
56 - 60	.58	133 - 140
61 - 65	.33	142 - 158
66 - 70	—	160 - 176

IMPORTANT NOTE

In addition to national and local electrical codes, many utilities have specific requirements for metering equipment. Always consult the serving utility for their specifications and requirements prior to ordering or installing Milbank meter mounting equipment.

BEFORE ENERGIZING

- A. Give equipment a thorough visual examination to determine that:
 - 1) No shipping or installation damage exists.
 - 2) Proper clearances have been maintained.
 - 3) All connections have been made.
 - 4) Equipment is clean and dry.
- B. Make a thorough examination to:
 - 1) Verify tightness of all bolted connections (see table below).
 - 2) Manually operate all circuit breakers, switches, relays, etc.
 - 3) Check rigidity of all mountings, bus bars and components.
 - 4) Use test equipment to check continuity of circuitry and integrity of insulation.
- C. All switches and circuit breakers should be in the "off" position.
- D. Verify that manual meter bypass (if applicable) is in non-bypass position.
- E. Install cover and/or close doors.
- F. If installation is not being energized at this time, follow "after-energizing" steps listed below. These steps will secure the installation in case of accidental energization.

WHEN ENERGIZING

- A. Use caution and follow established safety procedures:
 - 1) Wear safety apparel.
 - 2) Use safety equipment.
 - 3) Take action to prevent injury to yourself and others in the event of failure of the installation.
 - 4) Take action to prevent/decrease damage to property in the event of failure of the installation.
 - 5) If you are unsure how to safely energize the installation, get someone who is knowledgeable to do it.

AFTER ENERGIZING

- A. Secure the installation:
 - 1) To prevent accidental contact with energized parts, cover all openings with approved filler devices.
 - 2) To prevent unauthorized access, secure all covers and/or doors with approved security devices.
 - 3) Attach/post information to advise others of potential hazards associated with the installation.

RECOMMENDED TORQUE FOR GENERAL APPLICATIONS*

NOMINAL SIZE	JOINT DESCRIPTION		HEAD TYPE	TORQUE (INCH LBS.)
	SCREW	NUT		
10	BRASS	Brass Nut or Extruded Hole	ALL	20-25 in. lbs.
10	STEEL	CU or AL Busbar $\leq 1/8"$	ALL	25-30 in. lbs.
10	STEEL	Steel Nut or EH; CU or AL Busbar $> 1/8"$	ALL	30-35 in. lbs.
12	STEEL	Aluminum Extruded Hole	ALL	30-35 in. lbs.
12	STEEL	Steel Nut or Extruded Hole	ALL	40-50 in. lbs.
1/4	STEEL	Aluminum Extruded Hole	ALL	40-50 in. lbs.
1/4	STEEL	Steel Nut or EH; CU or AL Busbar	ALL	50-60 in. lbs.
5/16	STEEL	Aluminum Extruded Hole	HEX	60-70 in. lbs.
5/16	STEEL	Steel Nut or EH; CU or AL Busbar	HEX	100-150 in. lbs.
3/8	STEEL	Steel Nut	HEX	150-200 in. lbs.
1/2	STEEL	Steel Nut	HEX	200-250 in. lbs.

*Interior labels typically indicate the required torque for wire connectors and studs, and should be referenced first.

EH: Extruded Hole

CU: Copper

AL: Aluminum

MATERIALS

STEEL QUALITY

The meter equipment listed in this catalog is made of galvanized steel (AISI* G90) to afford the best possible weather proofing. *American Iron and Steel Institute.

STEEL SHEET

16 gauge, galvanized, sheet: 1 1/4 oz./ sq.ft. class zinc-coated.
(AISI G90)

14 gauge, galvanized, sheet: 1 1/4 oz./ sq.ft. class zinc-coated.

ALUMINUM EXTRUSION

Wire-Terminals: Alloy; 6061-T6, Tin-plated for CU/AL wire.

Bus Bar: Alloy; 6101-o & 6063-O

ALUMINUM SHEET

3000 series aluminum sheet, H14, or 5052 series aluminum sheet, H32. Where applicable thicknesses range from .064 — .125

COPPER SHEET & BUS

Electrolytic copper with tin plating in most applications.

INSULATING MATERIALS

- In most units, support bases for current-carrying components are molded from fiberglass reinforced high-strength, track resistant, thermoset polyester molding compounds.
- Clear or black safety shields and polarity barriers are molded from high-strength, track resistant, polycarbonate molding compounds.
- Various sheet insulating materials, as appropriate for the application are utilized in the fabrication of flat, formed and punched component parts and barriers.

FINISH

PROCESS

Light gray "state of the art" electrostatically applied powder paint offers a durable, non-fading finish. For further information concerning the chemical analysis of the weather resistant finish, please contact the factory.

METAL FASTENERS

Zinc-coated with a chromate dip.

RATING

NEMA RATING

Milbank meter sockets, CT cans and meter socket / breaker units have a type 3R rating.

DIAGRAM A

1Ø2W with 1 P.T. & 1 C.T.
Single Stator Meter (2W1Ø) - Form 3S
5T Socket, Test Switch #TS04-0101

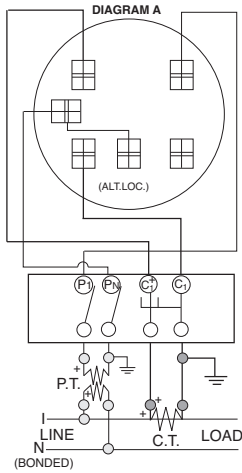


DIAGRAM B

1Ø3W with 1 C.T.
Single Stator Meter (2W1Ø) - Form 3S
5T Socket, Test Switch #TS04-0101

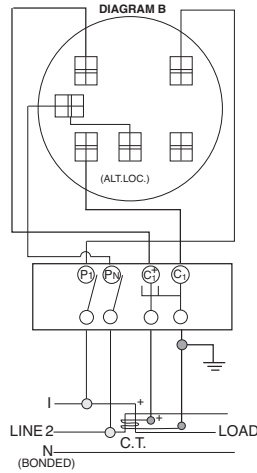


DIAGRAM C

1Ø3W with 2 C.T.'s
Single Stator Meter (3W1Ø) - Form 4S
6T Socket, Test Switch #TS07-0105

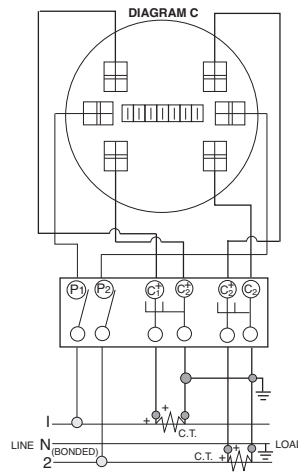


DIAGRAM D

1Ø3W or 3W Network with 2 C.T.'s
2 Stator Meter - Form 5S
8T Socket, Test Switch #TS07-0105

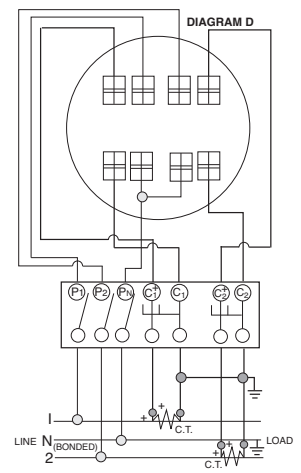


DIAGRAM E

3Ø3W "Δ" with 2 P.T.'s & 2 C.T.'s
2 Stator Meter - Form 5S
8T Socket, Test Switch #TS07-0105

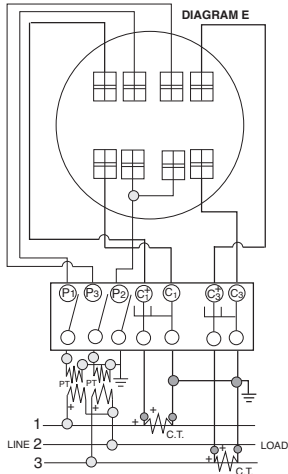


DIAGRAM F

3Ø3W "Δ" with 2 C.T.'s
2 Stator Meter - Form 5S
8T Socket, Test Switch #TS07-0105

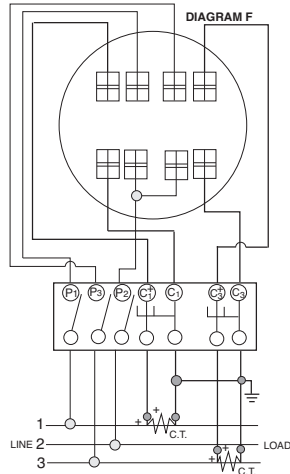


DIAGRAM G

3Ø4W "Y" with 3 C.T.'s
2 ½ Stator Meter - Form 6S
13T Socket, Test Switch #TS10-0109

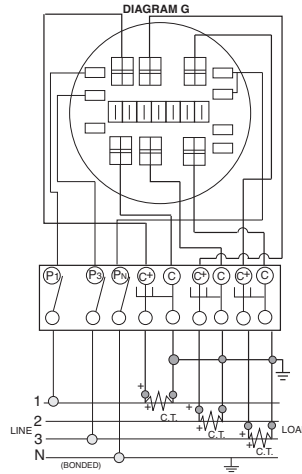


DIAGRAM H

3Ø4W "Y" with 2 P.T.'s & 3 C.T.'s
2 ½ Stator Meter - Form 6S
13T Socket, Test Switch #TS10-0109

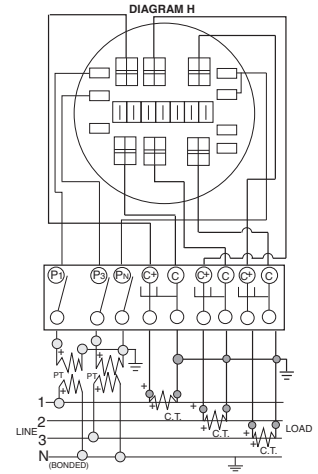


DIAGRAM I

3Ø4W "Y" or "Δ" with 3 C.T.'s
"Y" 3 Stator Meter - Form 9S
"Δ" 2 Stator Meter - Form 8S
13T Socket, Test Switch #TS10-0109

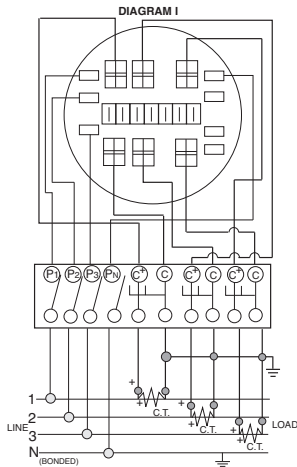
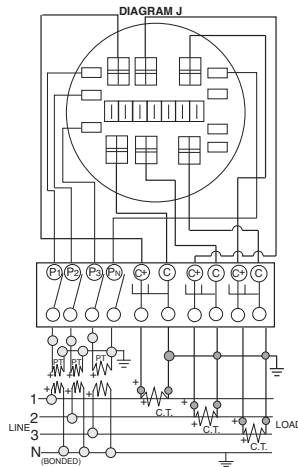
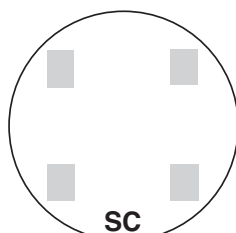
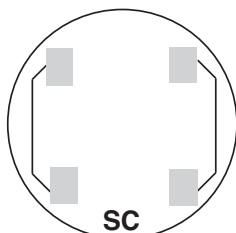
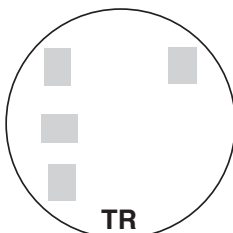
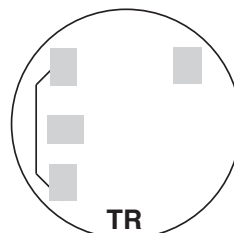
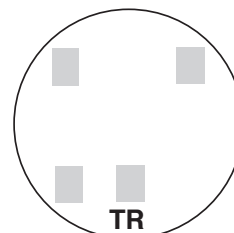
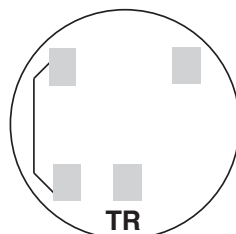
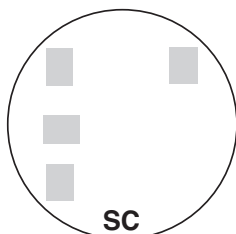
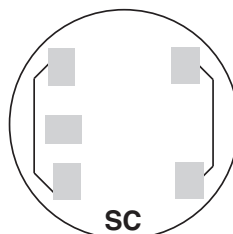
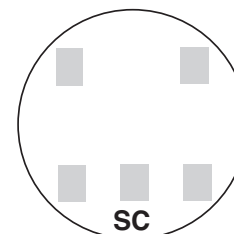
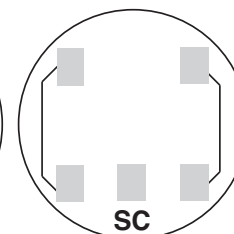
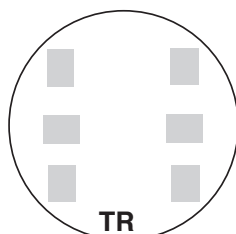


DIAGRAM J

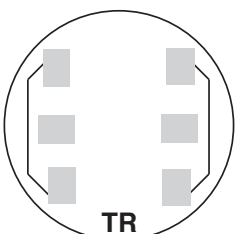
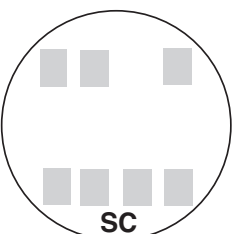
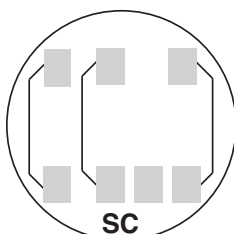
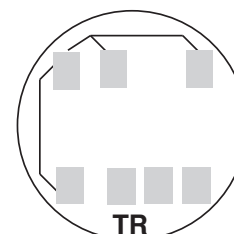
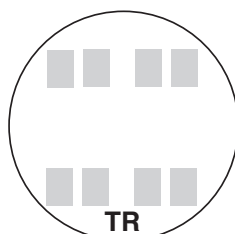
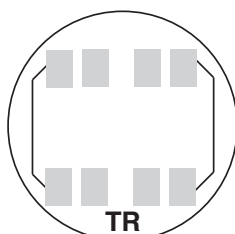
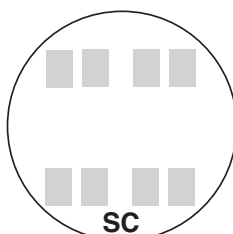
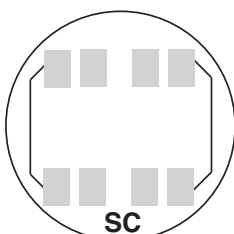
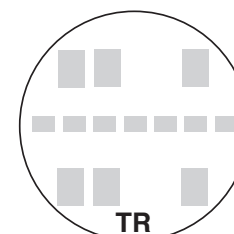
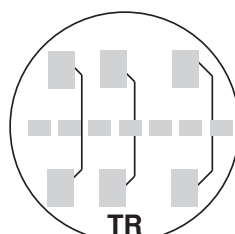
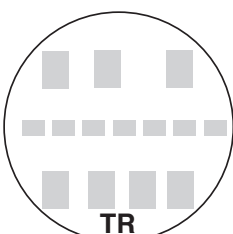
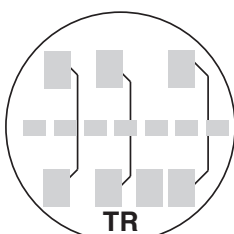
3Ø4W "Y" with 3 P.T.'s & 3 C.T.'s
3 Stator Meter - Form 9S
13T Socket, Test Switch #TS10-0109



PREWIRING: If standard factory prewiring is required, refer to wiring diagrams on this page. Determine appropriate diagram and send a copy with order. If custom factory prewiring is required, specify on order. Be sure to include meter socket catalog number, test switch make and catalog number, meter form number and provide a copy of your wiring diagram.

2 and 3-WIRE FORMS
1S & 2S2 and 3-WIRE FORMS
1S & 2S with BYPASS2-WIRE FORM 3S
5th Term. 9 o'clock2-WIRE FORM 3S
with BYPASS2-WIRE FORM 3S
5th Term. 6 o'clock2-WIRE FORM 3S
with BYPASS2 ELEMENT
3-WIRE NETWORK
FORM 12S 5th
TERM. 9 o'clock2 ELEMENT 3-WIRE
NETWORK FORM 12S
with BYPASS
5th Term. 9 o'clock2 ELEMENT
3-WIRE NETWORK
FORM 12S 5th
TERM. 6 o'clock2 ELEMENT 3-WIRE
NETWORK FORM 12S
with BYPASS
5th Term. 6 o'clock

3-WIRE FORM 4S

3-WIRE FORM 4S
WITH BYPASS2 or 3 ELEMENT
3Ø4W Y or Δ
Y FORM 14S
Δ FORM 15S2 or 3 ELEMENT
3Ø4W Y or Δ
FORMS 14S & 15S
with BYPASS2 ELEMENT
3Ø4W Y or Δ
Y FORM 7S
Δ FORM 24S
with BYPASS2 ELEMENT
2Ø3W, 2Ø4W, 3Ø3W
FORM 5S2 ELEMENT 2Ø3W,
2Ø4W, 3Ø3W
FORM 5S with
BYPASS2 ELEMENT
2Ø3W, 2Ø4W, 3Ø3W
FORM 13S2 or 3 ELEMENT
2Ø3W, 2Ø4W, 3Ø3W
FORM 13S with
BYPASS2 or 3 ELEMENT
3Ø4W Y or Δ
Y FORM 9S
Δ FORM 8STR = TRANSFORMER RATED
SC = SELF CONTAINED2 or 3 ELEMENT
3Ø4W Y or Δ
FORMS 8S & 9S
with BYPASS2 ELEMENT
3Ø4W Y
FORM 6S2 ELEMENT
3Ø4W Y
FORM 6S
with BYPASS

GA/AL/FL PANHANDLE CATALOG PAGE INDEX BY SKU

SKU	PAGE #	SKU	PAGE #	SKU	PAGE #	SKU	PAGE #
6003	49	K5400-BRIDGE-2POS	35	U4667-X-8528	19	UA4664-XT-9507	19
6116	49	K5400-TT30	35	U4667-XT-9526	19	UA4667-X-8062	19
105J	30	K5400-TT30	39	U4667-XT-BAR-9572	20	UA4667-X-8529	19
5T8K2	48	K5400-TT30	41	U4881-O	6	UA4667-XT-9504	20
A7514	33	K5400-TT30	43	U4881-O-50GB	6	UA4667-XT-9527	19
A7514	49	K5400-TT30	45	U4881-O-60GB	6	UAP1797-O-K3L-K2L	10
A7515	33	K5400-TT30GB	39	U4908-O	37	UAP2057-RL-TG	7
A7515	49	K5400-TT30GB	41	U4908-O-11GR	37	UAP5024-XI	25
A7516	33	K5400-TT30GB	43	U4908-O-55GBGR	37	UAP5792-XL-TG	8
A7516	49	K5400-TT30GB	45	U4909-O	37	UAP9328-DL	25
A7517	33	K5415	35	U4909-O-11GR	37	UAP9701-RRL	13
A7517	49	K5T	35	U4909-O-55GBGR	37	UC1290-RL	15
A7518	33	K5T	48	U5000-XL	39	UC1299-RL	15
A7518	49	K8180	48	U5000-XL-332	39	UC7235-RL	15
A7551	49	M400-PAR	27	U5000-XL-41	39	UC7237-RL	15
A8110	49	M400-PAR-UG	27	U5000-XL-55	39	UC7444-RL	16
A8111	49	M5-144	48	U5000-XL-75	39	UC7445-RL	16
A8112	49	MCP	49	U5000-XL-75GB	39	UC7448-RL	16
A9064	49	MR-2	48	U5059-X-2/200	28	UC7449-RL	16
CP-16PDMNT-CALT	30	MR2-SS	48	U5100-XL	41	UC7478-RL	16
CP-21	49	MR-4	48	U5100-XL-41	41	UC7532-RL	16
CP-24PDMNT-CALT	30	Q2100H	33	U5100-XL-55	41	UQFB-100	47
CP-ABK5/8	30	QN2150RH	33	U5100-XL-552GR	41	UQFB-100-X1	47
CP-PE-HOS-3POS	30	QN2200RH	33	U5100-XL-75	41	UQFB-125	47
CP-TC24H	30	TS04-0101	17	U5100-XL-75GB	41	UQFB-125-X1	47
CP-TC7D	30	TS04-0104	17	U5101-XL	41	UQFB-150	47
CP-TCWIRE	30	TS07-0049	17	U5136-O	35	UQFB-150-X1	47
K1350	23	TS07-0105	17	U5136-O	35	UQFB-175	47
K1350	49	TS10-0109	17	U5136-O-100S	35	UQFB-175-X1	47
K1350L	49	TS10-0110	17	U5136-O-200S	35	UQFB-200	47
K1539	23	TS10-0111	17	U5137-O-100S	35	UQFB-200-X1	47
K1539	49	TS10-0112	17	U5137-O-200S	35	UQFBH-100	47
K1540	23	U1079-R	10	U5138-O	35	UQFBH-125	47
K1540	49	U1129-O-K3L-K2L	10	U5138-O-200S	35	UQFBH-150	47
K1540L	49	U1232-X-HSP	22	U5139-O	35	UQFBH-175	47
K1541	23	U1233-X-HSP	22	U5168-XTL-100	33	UQFBH-200	47
K1541	49	U1234-X-HSP	22	U5168-XTL-100-KK	33	UQFP-100	46
K3082	49	U1235-X-HSP	22	U5168-XTL-100-KK-5T	33	UQFP-125	46
K3083	49	U1236-X-HPS	22	U5168-XTL-150	33	UQFP-150	46
K3441	49	U1252-X-K1	22	U5168-XTL-150-KK	33	UQFP-175	46
K3442	49	U1252-X-HSP	22	U5168-XTL-150-KK-5T	33	UQFP-200	46
K3450	35	U1253-X-HSP	22	U5168-XTL-200	33	UQFPH-100	46
K3865	30	U1254-X-HSP	22	U5168-XTL-200-KK	33	UQFPH-125	46
K3865	48	U1255-X-HSP	22	U5168-XTL-200-KK-5T	33	UQFPH-150	46
K4977-INT	48	U1256-X-HSP	22	U5200-XL	43	UQFPH-175	46
K5022	48	U1797-O-K3L-K2L	10	U5200-XL-332	43	UQFPH-200	46
K5022-INT	48	U1980-O	9	U5200-XL-41	43	UQFPH-M-100	46
K5035	35	U2120-X	14	U5200-XL-41GB	43	UQFPH-M-125	46
K5193	35	U2448-X	11	U5200-XL-75	43	UQFPH-M-150	46
K5194	35	U2569-O	9	U5200-XL-75GB	43	UQFPH-M-175	46
K5400-1450	35	U2594-X	14	U5210-XL	43	UQFPH-M-200	46
K5400-1450	37	U2852-X	23	U5220-XL	43	UQFP-M-100	46
K5400-1450	39	U2853-X	23	U5230-XL	43	UQFP-M-125	46
K5400-1450	41	U2854-X	23	U5268-XTL-150	33	UQFP-M-150	46
K5400-1450	43	U2855-X	23	U5268-XTL-150-KK	33	UQFP-M-175	46
K5400-1450	45	U2856-X	23	U5268-XTL-200	33	UQFP-M-200	46
K5400-1450GB	37	U2862-X	23	U5268-XTL-200-KK	33	Z703916-AC	19
K5400-520	37	U2863-X	23	U5300-O	45	Z703917-AC	21
K5400-520GB	39	U2864-X	23	U5300-O-41	45	Z703918-AC	19
K5400-520GB	41	U2865-X	23	U5300-O-55	45	Z703919-AC	19
K5400-520GB	43	U2866-X	23	U5300-O-552GR	45	Z703921-AC	19
K5400-520GB	45	U3491-XL-150	26	U5300-O-75	45	Z703921-AC	21
K5400-520GR	35	U3491-XL-200	26	U5310-O	45	Z704693-AC	19
K5400-520GR	37	U3795-XL-R-200	26	U5320-O	45	Z704694-AC	19
K5400-520GR	39	U3800	5	U5330-O	45	Z705420-AC	21
K5400-520GR	41	U3822-20GR	6	U7021-RL-TG	8	Z705456-AC	21
K5400-520GR	43	U3830	5	U7040-RL-TG	8	Z705545-AC	21
K5400-520GR	45	U3860	5	U7423-RXL	12	Z708124-AC	21
K5400-620	37	U4031-O-2/200	28	U7487-RL-TG	7	Z708145-AC	19
K5400-620GB	37	U4664-X-8507	18	U9701-RRL	13		
K5400-BRIDGE-1POS	35	U4667-X-8061	19	U9706-RRL	13		

GA/AL/FL PANHANDLE CATALOG UTILITY INDEX BY SKU

SKU#	UTILITIES		SKU#	UTILITIES	
	Huntsville Utilities	Gulf Power		Huntsville Utilities	Gulf Power
6003			QN2150RH		
6116			QN2200RH		
105J			TS04-0101		
5T8K2			TS04-0104		
A7514			TS07-0049		
A7515			TS07-0105		
A7516			TS10-0109		
A7517			TS10-0110		
A7518			TS10-0111		
A7551			TS10-0112		
A8110			U1079-R	X	
A8111			U1129-O-K3L-K2L		
A8112			U1232-X-HSP		
A9064			U1233-X-HSP		
CP-16PDMNT-CALT			U1234-X-HSP		
CP-21			U1235-X-HSP		
CP-24PDMNT-CALT			U1236-X-HPS		
CP-ABK5/8			U1252-X-K1		
CP-PE-HOS-3POS			U1252-X-HSP		
CP-TC24H			U1253-X-HSP		
CP-TC7D			U1254-X-HSP		
CP-TCWIRE			U1255-X-HSP		
K1350			U1256-X-HSP		
K1350L			U1797-O-K3L-K2L	X	
K1539			U1980-O	X	
K1540			U2120-X		
K1540L			U2448-X		
K1541			U2569-O		
K3082			U2594-X		X
K3083			U2852-X		
K3441			U2853-X		
K3442			U2854-X		
K3450			U2855-X		
K3865			U2856-X		
K4977-INT			U2862-X		
K5022			U2863-X		
K5022-INT			U2864-X		
K5035			U2865-X		
K5193			U2866-X		
K5194			U3491-XL-150		
K5400-1450			U3491-XL-200		
K5400-1450GB			U3795-XL-R-200	X	
K5400-520			U3800		
K5400-520GB			U3822-20GR		
K5400-520GR			U3830		
K5400-620			U3860		
K5400-620GB			U4031-O-2/200	X	
K5400-BRIDGE-1POS			U4664-X-8507		
K5400-BRIDGE-2POS			U4667-X-8061		
K5400-TT30			U4667-X-8528		
K5400-TT30GB			U4667-X-9526		
K5415			U4667-X-BAR-9572		
K5T			U4881-O		
K5T			U4881-O-50GB		
K8180			U4881-O-60GB		
M400-PAR			U4908-O		
M400-PAR-UG			U4908-O-11GR		
M5-144			U4908-O-55GBGR		
MCP			U4909-O		
MR-2			U4909-O-11GR		
MR2-SS			U4909-O-55GBGR		
MR-4			U5000-XL		
Q2100H			U5000-XL-332		

GA/AL/FL PANHANDLE CATALOG UTILITY INDEX BY SKU CONTINUED

UTILITIES			UTILITIES		
SKU#	Huntsville Utilities	Gulf Power	SKU#	Huntsville Utilities	Gulf Power
U5000-XL-41			UAP2057-RL-TG		X
U5000-XL-55			UAP5024-XI		X
U5000-XL-75			UAP5792-XL-TG		X
U5000-XL-75GB			UAP9328-DL		X
U5059-X-2/200			UAP9701-RRL		X
U5100-XL			UC1290-RL		
U5100-XL-41			UC1299-RL		
U5100-XL-55			UC7235-RL		
U5100-XL-552GR			UC7237-RL		
U5100-XL-75			UC7444-RL		
U5100-XL-75GB			UC7445-RL		
U5101-XL			UC7448-RL		
U5136-O			UC7449-RL		
U5136-O			UC7478-RL		
U5136-O-100S			UC7532-RL		
U5136-O-200S	X		UQFB-100		
U5137-O-100S			UQFB-100-X1		
U5137-O-200S			UQFB-125		
U5138-O			UQFB-125-X1		
U5138-O-200S			UQFB-150		
U5139-O			UQFB-150-X1		
U5168-XTL-100			UQFB-175		
U5168-XTL-100-KK			UQFB-175-X1		
U5168-XTL-100-KK-5T			UQFB-200		
U5168-XTL-150			UQFB-200-X1		
U5168-XTL-150-KK			UQFBH-100		
U5168-XTL-150-KK-5T			UQFBH-125		
U5168-XTL-200			UQFBH-150		
U5168-XTL-200-KK			UQFBH-175		
U5168-XTL-200-KK-5T			UQFBH-200		
U5200-XL			UQFP-100		
U5200-XL-332			UQFP-125		
U5200-XL-41			UQFP-150		
U5200-XL-41GB			UQFP-175		
U5200-XL-75			UQFP-200		
U5200-XL-75GB			UQFPH-100		
U5210-XL			UQFPH-125		
U5220-XL			UQFPH-150		
U5230-XL			UQFPH-175		
U5268-XTL-150			UQFPH-200		
U5268-XTL-150-KK			UQFPH-M-100		
U5268-XTL-200			UQFPH-M-125		
U5268-XTL-200-KK			UQFPH-M-150		
U5300-O			UQFPH-M-175		
U5300-O-41			UQFPH-M-200		
U5300-O-55			UQFP-M-100		
U5300-O-552GR			UQFP-M-125		
U5300-O-75			UQFP-M-150		
U5310-O			UQFP-M-175		
U5320-O			UQFP-M-200		
U5330-O			Z703916-AC		
U7021-RL-TG	X		Z703917-AC		
U7040-RL-TG			Z703918-AC		
U7423-RXL			Z703919-AC		
U7487-RL-TG			Z703921-AC		
U9701-RRL			Z703921-AC		
U9706-RRL			Z704693-AC		
UA4664-XT-9507			Z704694-AC		
UA4667-X-8062			Z705420-AC		
UA4667-X-8529			Z705456-AC		
UA4667-XT-9504			Z705545-AC		
UA4667-XT-9527			Z708124-AC		
UAP1797-O-K3L-K2L		X	Z708145-AC		

Other quality products available from Milbank

Commercial Pedestals

- Attractive • Easy to install
- Secure • Cost effective



**Un-
Strut Your
Stuff...**

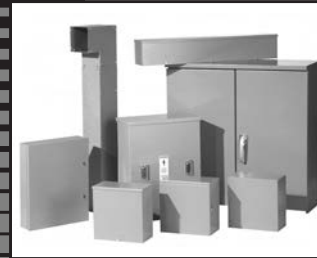
816.483.5314 phone
816.483.6357 fax
www.milbankmfg.com
ComPed 04/05 (2.5K)




COMMERCIAL ENCLOSURES

2007 PRICE LIST

Effective June 26, 2006
Supersedes and cancels all previous Milbank lists.
All prices listed within are subject to change without notice.



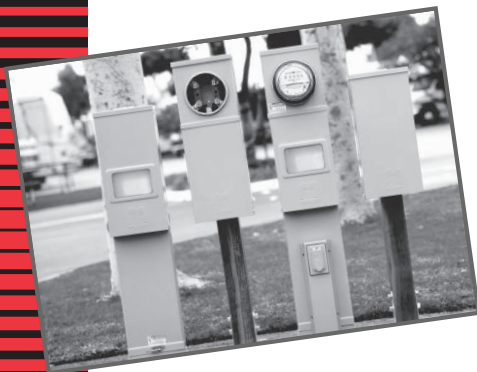
MILBANK MFG. CO. - ENCLOSURE GROUP
1601 South St. Louis Street
Concordia, MO 64020
Tel: 660-463-0805 Fax: 660-463-7950
Toll Free: 1-877-483-5314
www.milbankmfg.com




Recreational Vehicle Park Electrical Products & Accessories

Millennium Series

INCLUDES REPLACEMENT PARTS





In addition to your local utility's meter mounting equipment, Milbank also manufactures supporting products, such as...

Air Conditioner Disconnects
Hot Tub Disconnects
RV/Mobile Home Power Outlets
Terminal Boxes
Temporary Power Outlets
Commercial Pedestals
Commercial Enclosures
CT Enclosures
Circuit Breakers
Enclosed Circuit Breakers
Safety Switches
Test Switches

Contact your local distributor or go to
www.milbankmfg.com
to find additional product literature.



www.milbankmfg.com

Meter Mounting Equipment & More!

Commercial Electrical Enclosures

Residential & Commercial Metering

Commercial Meter Pedestals

Disconnect Devices

Current Transformer Enclosures

RV/MH Pedestals

Temporary Power Outlets

Circuit Breakers

Enclosed Circuit Breakers

Safety Switches

Test Switches



REPRESENTATIVE

DISTRIBUTOR

MILBANK MFG. CO.

PO Box 419028

Kansas City, MO 64141-0028

Tel: 816-483-5314 Fax: 816-483-6357

Toll Free: 877-483-5314

www.milbankmfg.com

MILBANK®



www.milbankmfg.com

GA/AL/FL 3/08 (2K)