

20
16

PRODUCT
CATALOG



ML KISHIGO®

ESTABLISHED 1971



E S T A B L I S H E D 1 9 7 1

The Original

With over 40 years on the job, we’ve made it our mission to design and manufacture high quality clothing that you can depend on to keep you safe and comfortable on the job site. We pride ourselves on our high standards and focus on the details and safety compliance standards so you don’t have to. When you buy ML Kishigo work wear, you’ll gain a new tool that makes your job easier.

Inside

The Original	3	T-Shirts	32
Quality	4	Accessories	36
Vests: Class 2	6	Outerwear	42
Class 3	18	Rainwear	48
Breakaway	20	Flame Resistant	54
Specialty	22	Vests: Public Safety	60
Enhanced Visibility	28	Custom Printing	63
Pants: Class E	30	Designed in the U.S.A.	64

Quality Comes Standard

Our garments are designed so you can find the right gear for the right job. All of our products are manufactured to exacting standards with unique features to give you the performance and comfort you need to get the job done.

Premium Black Series®

Performance, meet style.

There's nothing wrong with wanting to look good. Because even when you're covered from head to toe in dust and dirt, your clothes can still do the talking. So when you wear an item from the Black Series you'll know that you're getting the visibility you need, but with the style you want. Made with high quality materials to increase durability, Black Series gear also gives you enhanced visibility with reflective trim and piping and added functionality via cargo and expansive utility pockets. So go ahead, we're giving you permission to be the best-dressed guy on site.



Premium Brilliant Series®

Demand maximum visibility.

Sometimes when the sun goes down, you're just getting started. You're in for a long night and there's no time to mess around. You need to stand out and be seen. That's why we created the Brilliant Series for maximum visibility. With unique reflective trim, it enhances low light visibility and provides instant differentiation between you and the work zone. Because when traffic is coming toward you, it may be all you've got.



Standard



Premium Brilliant Series

FLAME RESISTANT

Premium Black Series®

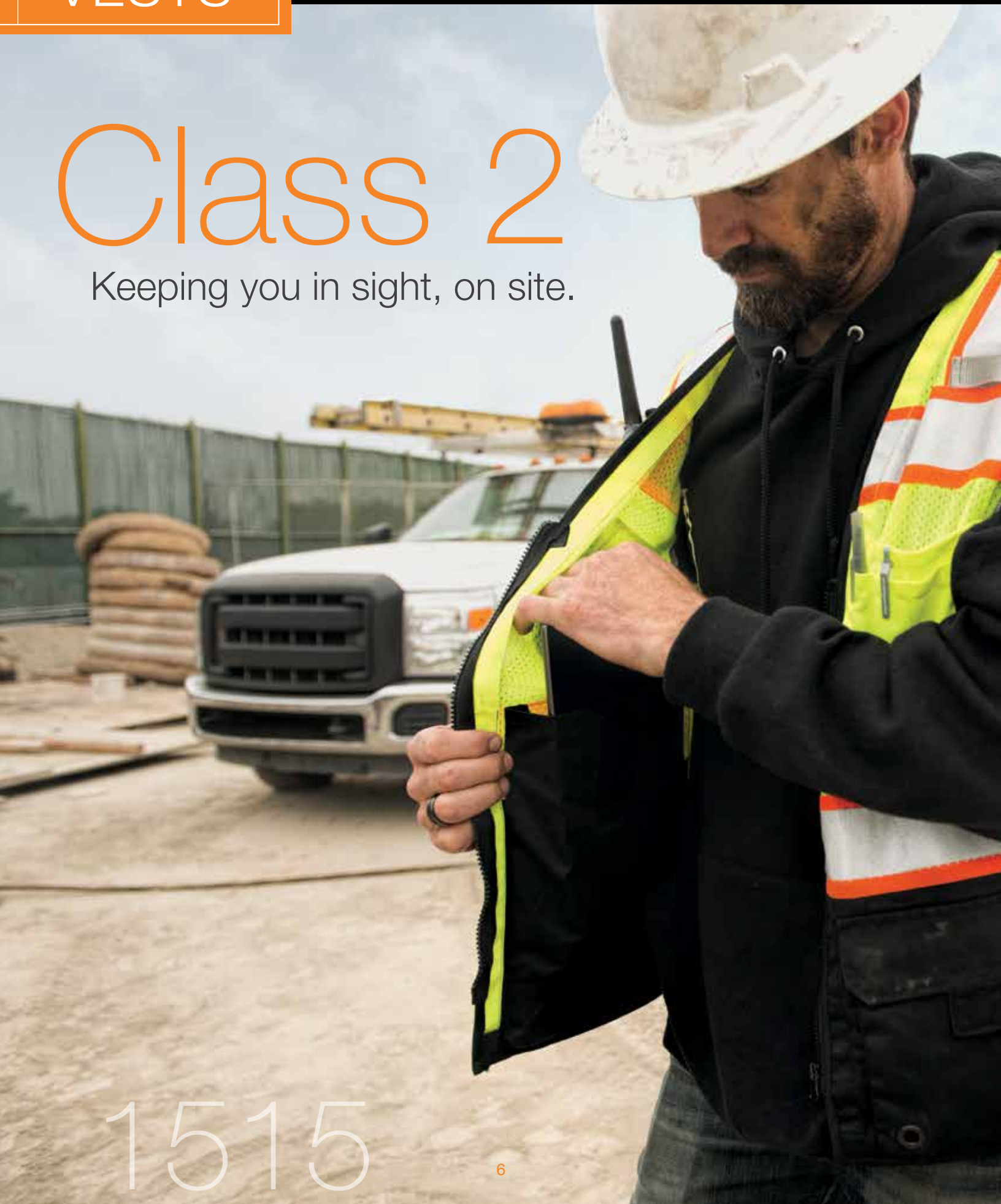
It's not just a label.

On some things, labels only tell you how much more it'll cost. But on our Flame Resistant line, the label is a promise. It tells you our products adhere to the latest performance and compliance specs and have been tested to the required methods for both NFPA and ANSI standards. But we didn't stop there. We wanted to make our gear even better so we used the best materials to give you the comfort and style you deserve. So when it counts the most, you'll be ready.



Class 2

Keeping you in sight, on site.



1515

Everything you need to get the job done.



Premium Black Series®

Black Bottom Vest

PERFORMANCE FEATURES

- Ultra-Cool™ 100% polyester mesh with heavy duty black bottom and trim to keep vest appearance clean & professional.
- Zipper front closure with durable webbing reinforcement.
- 2" wide high performance reflective material with 3" breathable contrasting color.
- Reflective trim around arms & piping down sides for added low light visibility.
- Left and right chest mic tabs.

POCKETS

- Two lower outside heavy duty expandable cargo pockets with adjustable flaps and grommets.
- Right chest 2-tier 4-division pencil pocket.
- Left chest heavy duty gusseted radio/utility pocket with reflective piping.
- Inside lower left heavy duty tablet (iPad) pocket with load-bearing strap.
- Inside lower right patch pocket.

SIZES: M-5X

ANSI/ISEA 107 Class 2 Compliant



1513



1510 Lime
1511 Orange

Premium Brilliant Series®

Heavy Duty Vest

PERFORMANCE FEATURES

- Ultra-Cool™ 100% polyester mesh.
- Brilliant Trim reflective edging improves low light visibility.
- Zipper front closure with durable webbing reinforcement.
- 2" wide high performance reflective material with 3" breathable contrasting color.
- Left and right chest mic tabs.

POCKETS

- Two lower outside cargo pockets with grommets and adjustable flaps.
- Right chest 2-tier pencil pocket.
- Left chest radio pocket with flap.
- Two inside patch pockets.

SIZES: M-5X

ANSI/ISEA 107 Class 2 Compliant



1513 Lime
1514 Orange

Premium Black Series®

Heavy Duty Vest

PERFORMANCE FEATURES

- Ultra-Cool™ 100% polyester mesh.
- Zipper front closure with durable webbing reinforcement.
- 2" wide high performance reflective material with 3" breathable contrasting color.
- Reflective trim around arms and piping down sides for added low light visibility.
- Black sides provide contrast and add a sporty look.
- Left and right chest mic tabs.

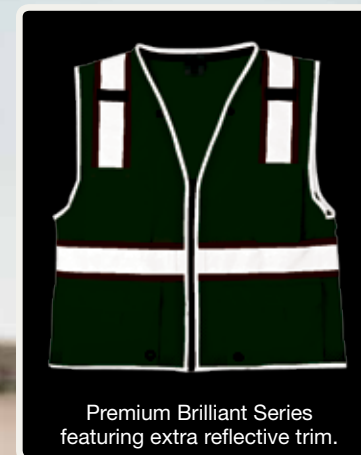
POCKETS

- Two lower outside cargo pockets with adjustable flaps and grommets.
- Right chest 2-tier pencil pocket.
- Left chest heavy duty gusseted radio/utility pocket with reflective piping.
- Two inside patch pockets.

SIZES: M-5X

(Size medium does not have black zipper or trim around neck and bottom - Will match garment color)

ANSI/ISEA 107 Class 2 Compliant



Premium Brilliant Series
featuring extra reflective trim.



Standard



1510



1163 Lime
1164 Orange

Solid Front with Mesh Back Vest

PERFORMANCE FEATURES

- Comfortable Ultra-Cool™ 100% polyester mesh material on back with solid front.
- Zipper front closure.
- 2" wide high performance reflective material with 3" contrasting color.
- Left and right chest mic tabs.

POCKETS

- Two lower outside patch pockets with flaps.
- Right chest 2-tier, 4-division pocket.
- Left chest radio pocket with flap.
- Two lower inside patch pockets.

SIZES: M-5X

ANSI/ISEA 107 Class 2 Compliant



1195 Lime
1196 Orange

All Mesh Contrast Vest

PERFORMANCE FEATURES

- Ultra-Cool™ 100% polyester mesh.
- Zipper front closure.
- 2" wide high performance reflective material with 3" breathable contrasting color.
- Left and right chest mic tabs.

POCKETS

- Two lower outside patch pockets with flaps.
- Right chest 2-tier pencil pocket.
- Left chest radio pocket with flap.
- Two inside patch pockets.

SIZES: M-5X

ANSI/ISEA 107 Class 2 Compliant



1530



NEW
1530 Lime
1531 Orange

Brilliant Series® X Back Vest

PERFORMANCE FEATURES

- Ultra-Cool™ 100% polyester mesh.
- Brilliant Trim reflective edging improves low light visibility.
- Zipper front closure.
- X back configuration.
- 2" wide reflective material with 3" contrasting color.
- Left chest mic tab.

POCKETS

- Two lower outside patch pockets with flaps.
- Inside right chest 2-division pocket.
- Left chest radio pocket with hook & loop tab closure.

SIZES: S-M, L-XL, 2X-3X, 4X-5X

ANSI/ISEA 107 Class 2 Compliant



We're listening and delivering.

Our inspiration and innovation come from one thing—you. The best ideas for our ever-evolving product line come from the people who wear them. We're always interested in hearing what would make our products even better and use that feedback to design and manufacture work wear that makes your job easier.



1163



1056 Lime
1055 Orange

Contrasting Mesh Vest

PERFORMANCE FEATURES

- Ultra-Cool™ 100% polyester mesh.
- Zipper front closure.
- 2" wide high performance reflective material with 4.5" contrasting color.
- Left chest mic tab.

POCKETS

- Inside left chest 2-tier, 4-division pencil pocket.
- Lower right inside patch pocket.

SIZES: M-5X

ANSI/ISEA 107 Class 2 Compliant



1166 Lime
1167 Orange

4 Season Adjustable Mesh Vest

PERFORMANCE FEATURES

- Ultra-Cool™ 100% polyester mesh.
- Hook & loop front closure.
- 4-season adjustability allows for accurate sizing in any weather even over bulky coats.
- Two 1" wide high performance reflective material with 4.5" contrasting color.
- Left chest mic tab.

POCKETS

- Outside left chest 2-tier pencil pocket.
- Inside right chest 2-tier pencil/cell pocket.
- Two inside lower patch pockets.

SIZES: M-XL, 2X-4X

ANSI/ISEA 107 Class 2 Compliant



1507 Lime
1508 Orange

Brilliant Series®

3 Pocket Zipper Mesh Vest

PERFORMANCE FEATURES

- Ultra-Cool™ 100% polyester mesh.
- Brilliant Trim reflective edging improves low light visibility.
- 2" wide high performance reflective material.
- Left chest mic tab.

POCKETS

- Left chest radio pocket.
- Inside lower left patch pocket.
- Inside right chest 2-tier, 4-division pencil pocket.

SIZES: M-5X

ANSI/ISEA 107 Class 2 Compliant



1507



1089 Lime
1090 Orange

Single Pocket Zipper Mesh Vest

PERFORMANCE FEATURES

- Ultra-Cool™ 100% polyester mesh.
- Zipper front closure.
- 2" wide high performance reflective material.
- Left chest mic tab.

POCKETS

- Outside left chest pocket.

SIZES: M-5X

ANSI/ISEA 107 Class 2 Compliant



1291 Lime
1292 Orange

6 Pocket Zipper Solid Vest

PERFORMANCE FEATURES

- Lightweight 100% polyester solid material.
- Zipper front closure.
- 2" wide high performance reflective material.
- Left chest mic tab.

POCKETS

- Two lower outside patch pockets with flaps.
- Left chest radio pocket.
- Right chest 4-division pencil pocket.
- Two inside patch pockets.

SIZES: S-M, L-XL, 2X-3X, 4X-5X

ANSI/ISEA 107 Class 2 Compliant



1085 Lime
1086 Orange

3 Pocket Zipper Mesh Vest

PERFORMANCE FEATURES

- Ultra-Cool™ 100% polyester mesh.
- Zipper front closure.
- 2" wide high performance reflective material.
- Left chest mic tab.

POCKETS

- Outside left chest radio pocket with hook & loop tab.
- Inside right chest 2-tier, 4-division pencil pocket.
- Lower inside left patch pocket.

SIZES: M-5X

ANSI/ISEA 107 Class 2 Compliant



1083 Lime
1084 Orange

4 Pocket Hook & Loop Mesh Vest

PERFORMANCE FEATURES

- Ultra-Cool™ 100% polyester mesh.
- 4" hook & loop front closure.
- 2" wide high performance reflective material.
- Left chest mic tab.

POCKETS

- Outside right chest 2-tier pencil pocket.
- Outside left chest patch pocket.
- Two large lower inside patch pockets.

SIZES: M-5X

ANSI/ISEA 107 Class 2 Compliant



NEW
1532 Lime
1533 Orange

Clear ID Vest

PERFORMANCE FEATURES

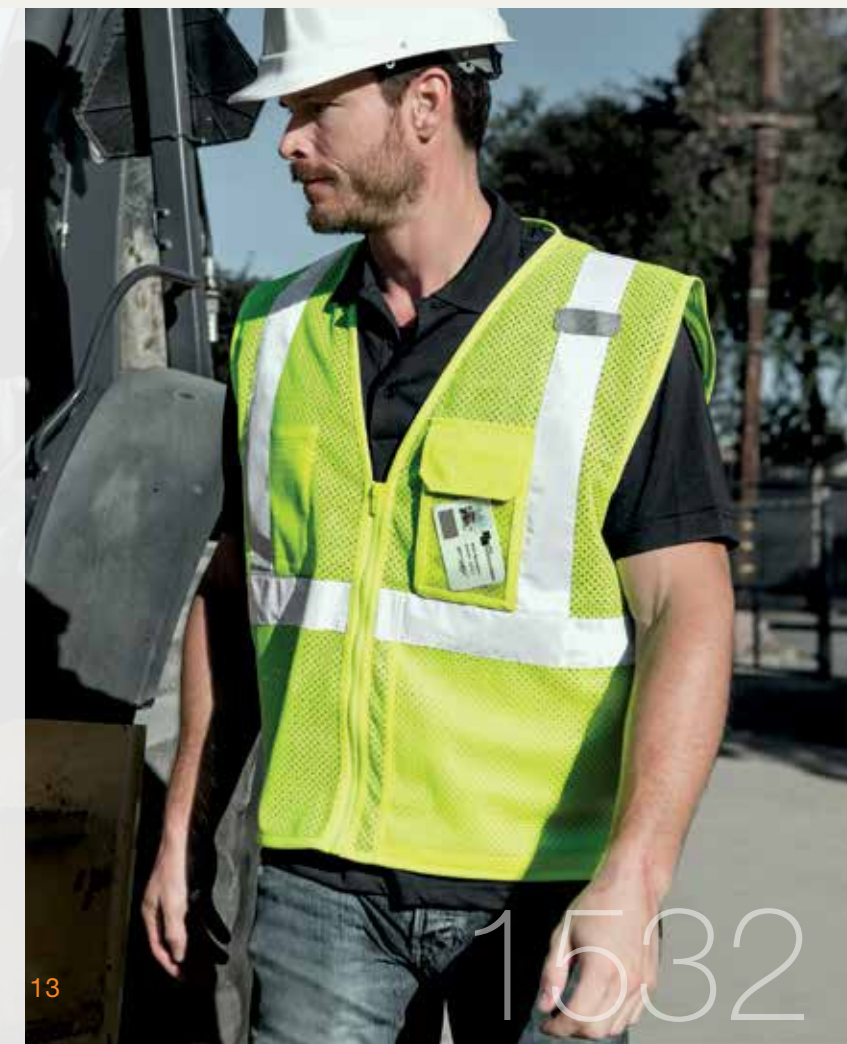
- Ultra-Cool™ 100% polyester mesh.
- Zipper front closure.
- 2" wide high performance reflective material.
- Left chest mic tab.

POCKETS

- Left chest radio pocket and clear ID holder with flap.
- Inside right chest 2-tier, 4-division pencil pocket.
- Lower inside left reinforced tablet (iPad) pocket with load bearing strap.

SIZES: S-M, L-XL, 2X-3X, 4X-5X

ANSI/ISEA 107 Class 2 Compliant



1532



1527 Lime
1528 Orange

Single Pocket Contrasting Mesh Vest – Economy

PERFORMANCE FEATURES

- 100% polyester mesh.
- Zipper front closure.
- 2" wide reflective material with 3" contrasting color.
- Left chest mic tab.

POCKETS

- Left chest pocket.

SIZES: S-M, L-XL, 2X-3X, 4X-5X

ANSI/ISEA 107 Class 2 Compliant



1519 Lime
1520 Orange

Single Pocket Zipper Mesh Vest – Economy

PERFORMANCE FEATURES

- 100% polyester mesh.
- Zipper front closure.
- 2" wide reflective material.
- Left chest mic tab.

POCKETS

- Left chest pocket.

SIZES: S-M, L-XL, 2X-3X, 4X-5X

ANSI/ISEA 107 Class 2 Compliant



1509 Lime
1529 Orange

Black Bottom Mesh Vest – Economy

PERFORMANCE FEATURES

- 100% polyester mesh material.
- Solid black polyester on lower front.
- Zipper front closure.
- 2" wide reflective material.
- Left and right chest mic tabs.

POCKETS

- Two lower front solid patch pockets with flaps.
- Left chest radio pocket.
- Right chest 2-tier pocket.
- Two large lower inside pockets.

SIZES: S-M, L-XL, 2X-3X, 4X-5X

ANSI/ISEA 107 Class 2 Compliant



1517 Lime
1518 Orange

4 Pocket Contrast Mesh Vest – Economy

PERFORMANCE FEATURES

- 100% polyester mesh.
- Zipper front closure.
- 2" wide reflective material with 3" solid contrasting color.
- Left chest mic tab.

POCKETS

- Two lower outside patch pockets with flaps.
- Right chest 2-division pocket.
- Left chest radio pocket with hook & loop tab closure.

SIZES: S-M, L-XL, 2X-3X, 4X-5X

ANSI/ISEA 107 Class 2 Compliant



1193 Lime
1194 Orange

Single Pocket Hook & Loop Mesh Vest – Economy

PERFORMANCE FEATURES

- 100% polyester mesh.
- 4" hook & loop front closure.
- 2" wide reflective material.
- Left chest mic tab.

POCKETS

- Left chest pocket.

SIZES: S-M, L-XL, 2X-3X, 4X-5X

ANSI/ISEA 107 Class 2 Compliant



1191 Lime
1192 Orange

6 Pocket Mesh Vest – Economy

PERFORMANCE FEATURES

- 100% polyester mesh material with solid polyester pockets.
- Zipper front closure.
- 2" wide reflective material.
- Left chest mic tab.

POCKETS

- Two lower outside patch pockets with flaps.
- Right chest 2-division pocket.
- Left chest 4-division pocket.
- Two inside patch pockets.

SIZES: S-M, L-XL, 2X-3X, 4X-5X

ANSI/ISEA 107 Class 2 Compliant



1197 Lime
1198 Orange

Combined Performance 5 Pocket Solid Vest

PERFORMANCE FEATURES

- 100% polyester solid material.
- Zipper front closure.
- 2" wide Reflexite® combined performance prismatic reflective material.
- Left chest mic tab.

POCKETS

- Left chest radio pocket with hook & loop strap.
- Right chest 2-tier, 3-division pencil pocket.
- Two lower pockets with zipper closures.
- One large inside lower left patch pocket.

SIZES: S-5X

ANSI/ISEA 107 Class 2 Compliant



1076 Lime
1077 Orange

Reflexite® All Mesh Vest

PERFORMANCE FEATURES

- Ultra-Cool™ 100% polyester mesh.
- Zipper front closure.
- 2" wide Reflexite® reflective material.
- Left and right chest mic tabs.

POCKETS

- Outside left chest 2-tier, 4-division pencil pocket.
- Inside lower right patch pocket.

SIZES: S-5X - Small only available in orange.

ANSI/ISEA 107 Class 2 Compliant



1208A Lime
1207A Orange

Reflexite® Solid Front with Mesh Back Vest

PERFORMANCE FEATURES

- Comfortable Ultra-Cool™ 100% polyester mesh material on back with solid front.
- Zipper front closure.
- 2" wide Reflexite® reflective material.
- Left and right chest mic tabs.

POCKETS

- Two lower outside patch pockets with flaps.
- Left chest radio pocket.
- Right chest 4-division pencil pocket.
- Two inside patch pockets.

SIZES: S-5X - Small only available in orange.

ANSI/ISEA 107 Class 2 Compliant



1198

16

Choose the right material for the right job.



Prismatic ~ Wet conditions

This material reflects back color and utilizes thousands of micro-prisms that are covered by a transparent film. Due to this protective layer, it performs exceptionally well in wet conditions and resists abrasion compared to glass bead.



Glass Bead ~ Warm conditions

Silver glass bead material is made of microscopic glass beads adhered to fabric, which creates a more flexible and lightweight reflective option. While ideal in many environments, especially warm ones, its largest drawback is that it loses reflectivity when wet and can abrade in rough environments.



Your garment's reflective material should stand out from the work environment.

Class 3

Meets ANSI standards,
surpasses yours.

The
Premium Brilliant Series
Difference.



Premium
Brilliant Series®

1550 Lime
1551 Orange

Heavy Duty Vest

PERFORMANCE FEATURES

- Ultra-Cool™ 100% polyester mesh with solid pockets.
- Brilliant Trim reflective edging improves low light visibility.
- Zipper front closure with durable webbing reinforcement.
- 2" wide high performance reflective material with 3" Ultra-Cool™ contrasting mesh.
- Left and right chest mic tabs.
- Two lapel grommets.

POCKETS

- Outside right chest 2-tier, 4-division pocket.
- Outside left chest multi-use cell pocket.
- Inside lower patch pockets.
- Two lower outside cargo pockets with flaps and grommets.

SIZES: M-5X

ANSI/ISEA 107 Class 3 Compliant



Standard

Premium Brilliant Series
featuring extra reflective trim.



1242 Lime
1243 Orange

6 Pocket Contrast Mesh Vest

PERFORMANCE FEATURES

- Ultra-Cool™ 100% polyester mesh with solid pockets.
- Zipper front closure.
- 2" wide high performance reflective material with 3" contrasting mesh.
- Left chest mic tab.

POCKETS

- Outside left chest radio pocket.
- Outside right chest 2-tier, 3-division pocket.
- Inside lower patch pockets.
- Two lower outside solid material patch pockets with flaps.

SIZES: M-5X

ANSI/ISEA 107 Class 3 Compliant



1201A Lime
1202A Orange

Reflexite® Mesh Vest

PERFORMANCE FEATURES

- Ultra-Cool™ 100% polyester mesh with solid pockets.
- 6" hook & loop front closure.
- 2" wide Reflexite® reflective material.
- Left and right chest mic tabs.

POCKETS

- Outside left chest 2-tier pocket.
- Outside right chest multi-use cell pocket.
- Inside lower patch pockets.
- Two lower outside patch pockets with flaps.

SIZES: S-5X - Small only available in orange.

ANSI/ISEA 107 Class 3 Compliant



1264 Lime
1265 Orange

All Mesh Vest – Economy

PERFORMANCE FEATURES

- Ultra-Cool™ 100% polyester mesh.
- Zipper front closure.
- 2" wide reflective material.
- Left chest mic tab.

POCKETS

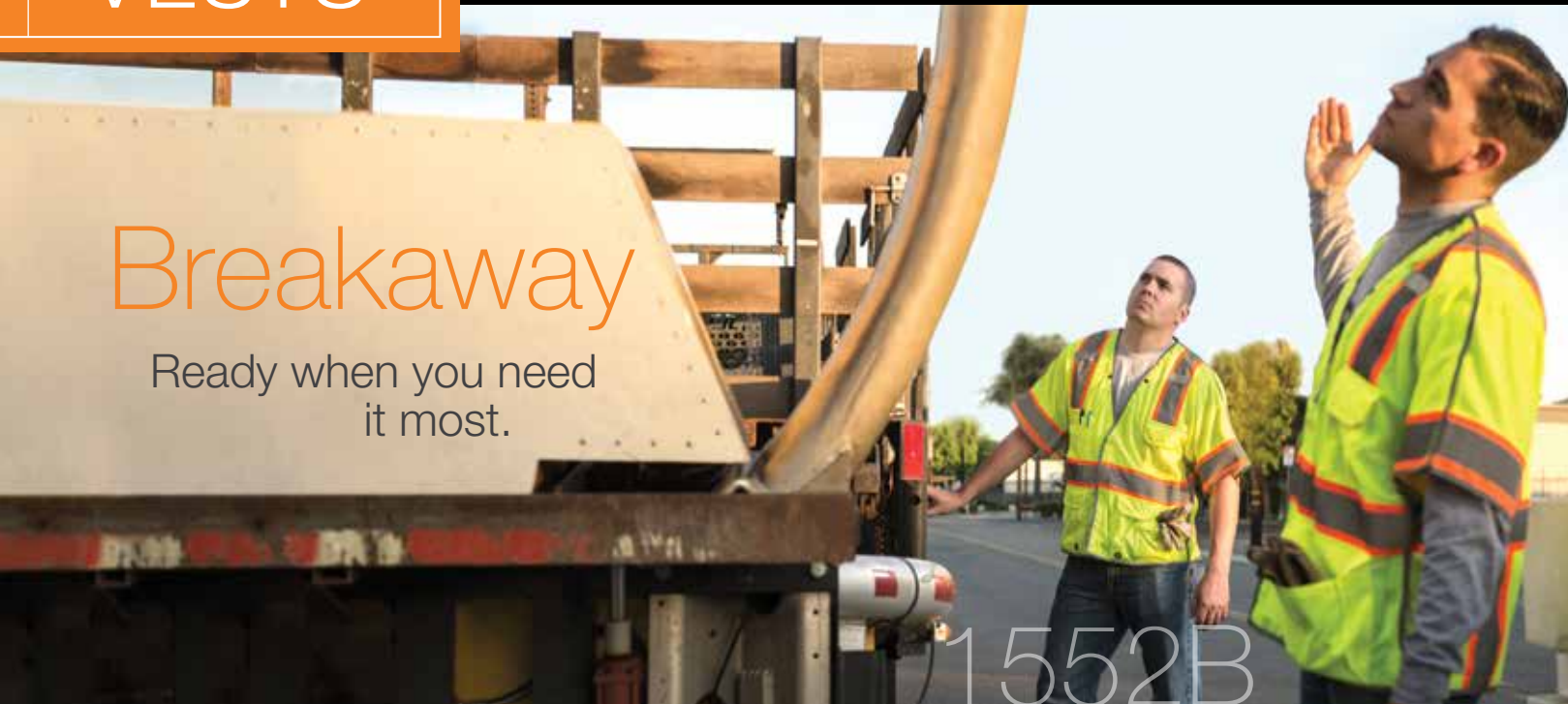
- Outside left chest radio pocket.
- Inside lower right patch pocket.
- Inside right chest pocket.

SIZES: M-5X

ANSI/ISEA 107 Class 3 Compliant

Breakaway

Ready when you need it most.



1552B



1552B Lime
1553B Orange

Premium Brilliant Series®

Breakaway Class 3 Vest

PERFORMANCE FEATURES

- Ultra-Cool™ 100% polyester mesh material.
- Brilliant Trim reflective edging improves low light visibility.
- Hook & loop front closure with durable webbing reinforcement.
- 5-point breakaway on shoulders, sides, and front closure.
- 2" wide high performance reflective material on 3" contrasting color.
- Left and right chest mic tabs.
- Two lapel grommets.

POCKETS

- Outside right chest 2-tier 4-division pocket.
- Outside left chest multi-use cell pocket.
- Inside lower patch pockets.
- Two lower outside cargo pockets with adjustable flaps and grommets.

SIZES: M-5X

ANSI/ISEA 107 Class 3 Compliant



Designed with you in mind.

When you're on the job, you can't control everything around you. From broken machines to drivers that come a little too close, a job site can be a dangerous place. That's why we created a line that's designed to break away when pulled. You'll lose a panel, but keep so much more.



1174 Lime
1176 Orange

Contrasting Mesh Breakaway Vest

PERFORMANCE FEATURES

- Ultra-Cool™ 100% polyester mesh.
- Hook & loop breakaway shoulders, sides & front closure.
- 2" wide high performance reflective material with 4.5" contrasting color.
- Left chest mic tab.

POCKETS

- Inside left chest 2-tier, 4-division pencil pocket.
- Inside lower left patch pocket.
- Inside right chest cell phone pocket.

SIZES: M-5X

ANSI/ISEA 107 Class 2 Compliant



1166BA Lime
1167BA Orange

4 Season Breakaway Vest

PERFORMANCE FEATURES

- Ultra-Cool™ 100% polyester mesh.
- 4-season adjustability for accurate sizing in any weather even over bulky coats.
- 5-point breakaway.
- Hook & loop front closure.
- Two 1" wide high performance reflective material with 4.5" contrasting color.
- Left chest mic tab.

POCKETS

- Inside right chest 2-tier pencil/cell pocket.
- Two inside lower patch pockets.
- Outside left chest 2-tier pencil pocket.

SIZES: M-XL, 2X-4X

ANSI/ISEA 107 Class 2 Compliant



1505B Lime
1506B Orange

Premium Brilliant Series®

Breakaway Vest

PERFORMANCE FEATURES

- Ultra-Cool™ 100% polyester mesh.
- Brilliant Trim reflective edging improves low light visibility.
- 5-point breakaway with breakaway sides, shoulders and front closure.
- 2" wide high performance reflective material.
- Left chest mic tab.

POCKETS

- Left chest radio pocket.
- Inside lower left patch pocket.
- Inside right chest 2-tier, 4-division pencil pocket.

SIZES: M-5X

ANSI/ISEA 107 Class 2 Compliant

Specialty

Where innovation meets demand.



1521 Lime

Premium Brilliant Series® Ladies Fitted Vest

PERFORMANCE FEATURES

- Ultra-Cool™ 100% polyester mesh back and sides with lightweight solid front.
- Zipper front closure.
- 2" wide high performance reflective material.
- Brilliant Trim and reflective piping around arms & down sides for added low light visibility.
- Waist cinches to ensure a perfect fit.

POCKETS

- Two hidden lower outside slash pockets with zipper closures.
- Inside ergonomically positioned lower left radio pocket with flap.

LADIES SIZES: S, M, L, XL

ANSI/ISEA 107 Class 2 Compliant



1525 Lime
1526 Orange

Ladies Mesh Vest – Economy

PERFORMANCE FEATURES

- Ultra-Cool™ 100% polyester mesh.
- Zipper front closure.
- 2" wide high performance reflective material.
- Reflective trim around arms for better visibility in low light conditions.
- Cinched sides to ensure a perfect fit.

POCKETS

- Two lower patch slash pockets.
- Inside lower left radio pocket.

LADIES SIZES: S, M, L, XL

ANSI/ISEA 107 Class 2 Compliant



1523 Lime
1524 Orange

Premium Brilliant Series®

Heavy Duty Vest

PERFORMANCE FEATURES

- Ultra-Cool™ 100% polyester mesh material with Mossy Oak® Break-Up Infinity® bottom & trim to keep vest appearance clean & sporty.
- Zipper front closure with durable webbing reinforcement.
- 2" wide high performance breathable reflective material greatly reduces hot spots.
- Brilliant Series reflective piping down sides for added low light visibility.
- Left chest mic tab.

POCKETS

- Two lower outside expandable cargo pockets with flaps.
- Right chest 2-tier, 4-division pocket.
- Left chest gusseted radio/utility pocket with reflective piping.
- Inside lower left heavy duty tablet (iPad) pocket with load-bearing strap.

SIZES: M-5X

ANSI/ISEA 107 Class 2 Compliant
Official Licensed Product of Haas Outdoors, Inc., West Point, MS 39773.
Produced by ML Kishigo



1521



Uniquely designed with unparalleled durability.



Premium Black Series®

S5002 Lime
S5003 Orange

Surveyors Vest

PERFORMANCE FEATURES

- Solid polyester front with mesh back.
- Heavy duty black bottom and trim to help keep a clean appearance.
- Zipper front closure reinforced with durable webbing.
- 2" wide high performance reflective material laminated to 3" contrasting color.
- Left and right mic tabs.
- 2 lapel grommets.
- Padded neck for comfort.

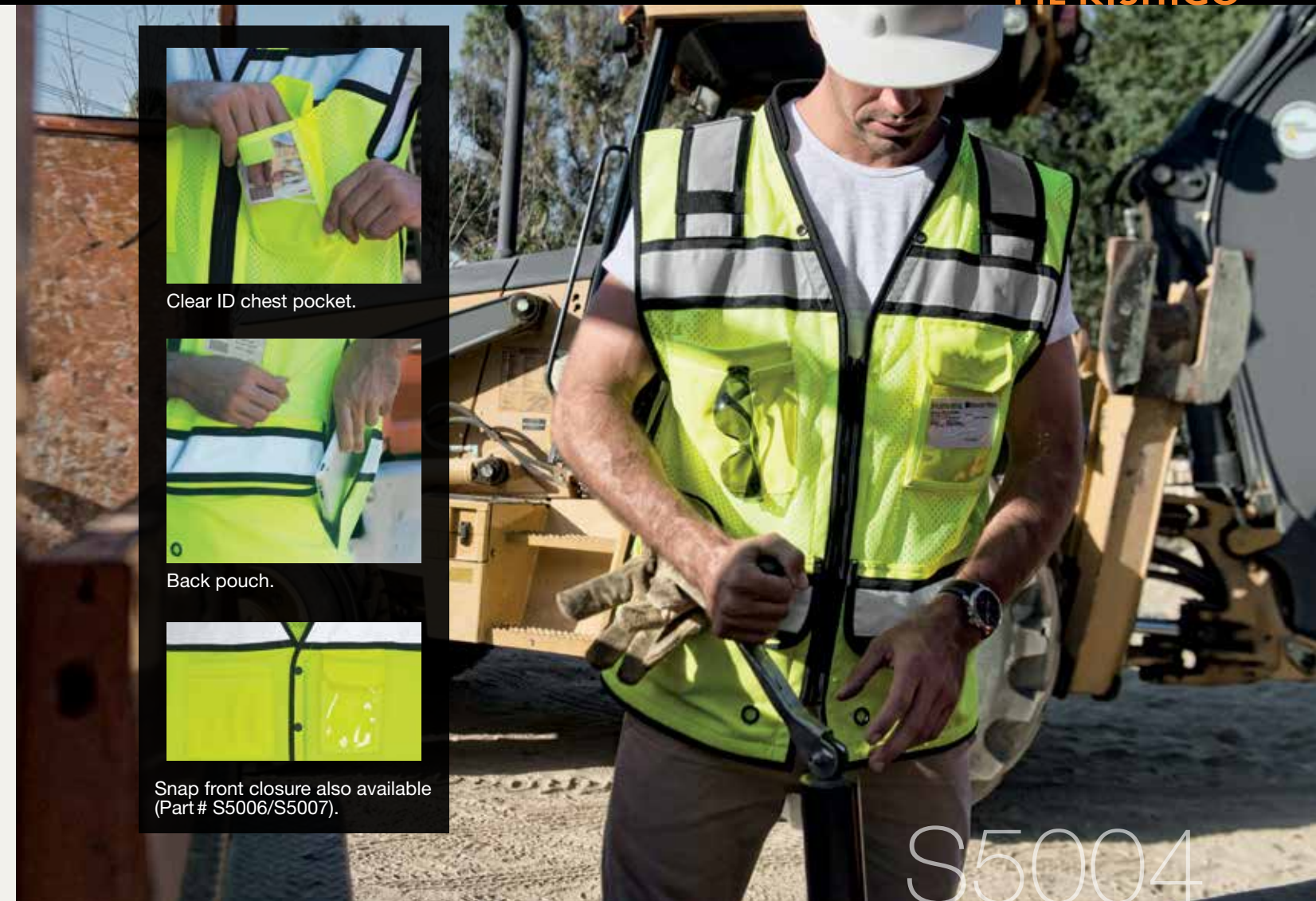
POCKETS

- Left chest 2-tier pocket with dual function flap that can be held open by hook & loop.
- Large right gusseted pocket with flap.
- Outside lower front pockets with flaps, left and right stake pockets, left and right elastic spray paint can pockets.
- Lower inside right full length zipper pocket with load bearing strap.
- Lower inside left tablet (iPad) pocket with load bearing strap.
- Hidden back pouch with left and right zipper access.

SIZES: M-5X

(Size medium does not have black trim around arms - Will match garment color).

ANSI/ISEA 107 Class 2 Compliant



S5004 Lime **Z**
S5005 Orange **Z**



S5006 Lime **S**
S5007 Orange **S**

High Performance Surveyors Vest **NEW**

PERFORMANCE FEATURES

- Ultra-Cool™ 100% polyester mesh.
- Zipper or snap front closure with durable webbing reinforcement.
- 2" wide high performance reflective material with 3" contrasting black.
- Left and right mic tabs.
- Padded neck for comfort.
- 2 lapel grommets.

POCKETS

- Left chest radio pocket and clear ID holder with flap.
- Right chest 2-tier, 4-division pencil pocket.
- Outside left and right full length pockets with grommets.
- Inside lower left tablet (iPad) pocket with load bearing strap.
- Inside lower right full length pocket.
- Hidden back pouch with left and right zipper access.

SIZES: M-5X

ANSI/ISEA 107 Class 2 Compliant

AVAILABLE IN:

- Z** Zipper
- S** Snaps



S5000



S5000 Lime
S5001 Orange

Professional Surveyors Vest

PERFORMANCE FEATURES

- Solid polyester front with mesh back.
- Zipper front closure with durable webbing reinforcement.
- 2" wide high performance reflective material laminated to 3" contrasting color.
- Left and right mic tabs.
- 2 lapel grommets.
- Padded neck for comfort.

POCKETS

- Left chest 2-tier pocket with dual function flap that can be held open by hook & loop.
- Large right gusseted pocket with flap.
- Outside lower front pockets with flaps, left and right stake pockets, left and right elastic spray paint can pockets.
- Lower inside left and right full length zipper pockets with load bearing straps.
- Hidden back pouch with left and right zipper access.

SIZES: M-5X

ANSI/ISEA 107 Class 2 Compliant



S5010 Lime
S5011 Orange

Professional Surveyors Vest

PERFORMANCE FEATURES

- Solid polyester front with mesh back.
- Zipper front closure with durable webbing reinforcement.
- 2" wide high performance reflective material laminated to 3" contrasting color.
- Left and right mic tabs.
- 2 lapel grommets.
- Padded neck for comfort.

POCKETS

- Same pocket configuration as the Professional Class 2 Surveyors Vest (S5000/S5001) shown above.

SIZES: M-5X

ANSI/ISEA 107 Class 3 Compliant



T341 Lime

Fall Protection Vest

PERFORMANCE FEATURES

- Durable 100% polyester solid front & Ultra-Cool™ mesh back.
- Snap front closure.
- 2" wide high performance reflective material on 3" contrasting color.
- Back and side openings for harness rings.
- Left and right chest mic tabs.

POCKETS

- Left chest radio pocket with flap.
- Right chest 2-tier pencil pocket.
- Two lower front expandable-flap closure pockets.
- Two lower inside patch pockets.

SIZES: S-M, L-XL, 2X-3X, 4X-5X

ANSI/ISEA 107 Class 2 Compliant



T341



We've got you covered & tethered.

Working with fall protection manufacturers, we developed a functional vest that integrates easy donning, visual inspection of harness, and secure access to D-Rings while maintaining the high visibility your workers need to meet the ANSI standard.

VESTS

Enhanced Visibility

Day and night recognition when you never thought you'd need it.



NEW
B500 Lime

Enhanced Visibility Professional Utility Vest

PERFORMANCE FEATURES

- Heavy duty poly/cotton solid front with mesh back.
- Oversized zipper front closure with durable webbing reinforcement.
- 2" wide high performance reflective material with 3" high visibility contrasting lime.
- Left and right mic tabs.
- Padded neck for comfort.
- 2 lapel grommets.

POCKETS

- Left chest 2-tier pocket with dual function flap that can be held open by hook & loop.
- Large right chest gusseted pocket with flap.
- Outside lower front gusseted pockets with flaps, left elastic spray can pocket.
- Inside lower right full length zipper pockets with load bearing strap.
- Inside lower left tablet (iPad) pocket with load bearing strap.
- Hidden back pouch with left and right zipper access.
- Inside left chest phone pocket.

SIZES: M-5X

Not ANSI/ISEA Compliant



NEW
B100 Lime

Enhanced Visibility Multi Pocket Mesh Vest

PERFORMANCE FEATURES

- 100% polyester mesh.
- Zipper front closure with durable webbing reinforcement.
- 2" wide high performance reflective material with 3" high visibility contrasting lime.
- Left and right mic tabs.
- 2 lapel grommets.

POCKETS

- Two lower outside cargo pockets with adjustable flaps.
- Right chest 2-tier pencil pockets.
- Left chest radio pocket.
- Two inside patch pockets.

SIZES: S-M, L-XL, 2X-3X, 4X-5X

Not ANSI/ISEA Compliant



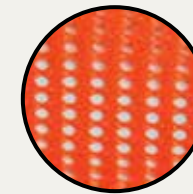
N Series Mesh Vest

PERFORMANCE FEATURES

- High quality polyester mesh.
- Comfortable cotton trim.
- Three 5/8" wide reflective stripes with 2" contrasting material on back and two on front (N-A1 & NL-A2).
- 3" hook and loop front closure.
- 3/4" elastic side closures for universal sizing.

ONE SIZE FITS MOST

Not ANSI/ISEA Compliant



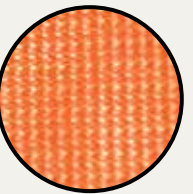
T Series Mesh Vest

PERFORMANCE FEATURES

- Tightly woven mesh.
- Comfortable cotton trim.
- 1" wide reflective stripes (T-V17 & TL-V18).
- 3" hook and loop front closure.
- 3/4" elastic side closures for universal sizing.

ONE SIZE FITS MOST

Not ANSI/ISEA Compliant



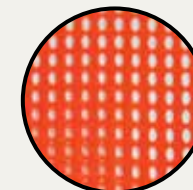
P Series Mesh Vest

PERFORMANCE FEATURES

- Comfortable cotton trim.
- 1" wide reflective stripes (Excluding P & PL).
- 1/2" wide reflective stripes with contrasting material (P-V21 & PL-V22).
- 3" hook and loop front closure.
- 3/4" elastic side closures for universal sizing.

ONE SIZE FITS MOST

Not ANSI/ISEA Compliant



1092 Lime
1091 Orange

Multi-pocket Surveyors Vest – Economy

PERFORMANCE FEATURES

- 100% polyester solid material.
- Zipper front closure.
- 1" wide reflective stripes with 2" wide contrasting material.

POCKETS

- Two lower outside patch pockets with flaps.
- Two outside chest pencil pockets.
- Two inside patch pockets.

SIZES: M-5X

Not ANSI/ISEA Compliant

Class E



3118



3118 Lime
3119 Orange

Premium Brilliant Series® Mesh Pants

PERFORMANCE FEATURES

- Ultra-Cool™ 100% polyester mesh.
- Brilliant Series reflective piping considerably improves low light visibility.
- Hook & loop fly with adjustable sides and elastic back.
- 2" wide high performance reflective material with 3" contrasting color.
- Elastic bottom cuff with zipper for boot access.
- Black bottom to help keep a clean appearance.

POCKETS

- Heavy duty solid left and right cargo pockets with reflective piping.
- Left and right side pocket access slits.

SIZES:

S-M Waist - Up to 48" | Inseam - 29"
L-XL Waist - Up to 54" | Inseam - 32"
2X-4X Waist - Up to 66" | Inseam - 34"

ANSI/ISEA 107 Class E Compliant



3107

3108

3113

3112

3116

3117

Mesh Pants

PERFORMANCE FEATURES

- Ultra-Cool™ 100% polyester mesh.
- Drawstring waist with elastic back.
- Elastic bottom cuffs.
- 3116 & 3117 have zipper cuff for boot access.
- 2" wide reflective material.
- 2" wide Reflexite® prismatic reflective material on 3112 & 3113.

POCKETS

- Left and right side pocket access slits.

SIZES:

S-M Waist - Up to 48" | Inseam - 29"
L-XL Waist - Up to 54" | Inseam - 32"
2X-4X Waist - Up to 66" | Inseam - 34"

ANSI/ISEA 107 Class E Compliant

How to make your Class 3 ensemble.



Class 2

Class E

Class 3



3930 Lime
3931 Orange

Mesh Gaiters

PERFORMANCE FEATURES

- Ultra-Cool™ 100% polyester mesh.
- Two 2" wide high performance reflective material encircle the gaiter.
- Adjustable hook & loop closure.



3932 Lime
3933 Orange

Premium Black Series® Mesh Gaiters

PERFORMANCE FEATURES

- Ultra-Cool™ 100% polyester mesh.
- 2" wide high performance reflective material with contrasting mesh.
- Zipper closure with hook and loop adjustable bottom for easy boot access.
- Black bottom to help keep clean appearance.



3934 Lime
3935 Orange

Premium Black Series® Waterproof Gaiters

PERFORMANCE FEATURES

- Waterproof material with durable seam sealed construction to keep you dry and comfortable.
- 2" wide high performance reflective material with contrasting mesh.
- Zipper closure with storm flap and hook and loop adjustable bottom for easy boot access.
- Black bottom to help keep clean appearance.



3934

Reflexite®

Class 2 & Class 3

Lightweight material to keep you safe and cool.

9134

32



9114 Lime
9115 Orange

Premium Black Series® T-Shirt

PERFORMANCE FEATURES

- Microfiber polyester material wicks away moisture.
- 2" wide high performance breathable reflective tape significantly reduces hot spots and provides greater flexibility over solid tapes.
- Black sides provide contrast and add a sporty look.

POCKETS

- Left chest pocket.

SIZES: M-5X

ANSI/ISEA 107 Class 2 Compliant



9134 Lime
9135 Orange

Premium Black Series®

Long Sleeve T-Shirt

PERFORMANCE FEATURES

- Microfiber polyester material wicks away moisture.
- 2" wide high performance breathable reflective tape significantly reduces hot spots and provides greater flexibility over solid tapes.
- Black sides provide contrast and add a sporty look.

POCKETS

- Left chest pocket.

SIZES: M-5X

ANSI/ISEA 107 Class 3 Compliant

33

**NEW**9160 Lime
9161 Orange**Premium Brilliant Series®****High Performance Class 2 T-Shirt****PERFORMANCE FEATURES**

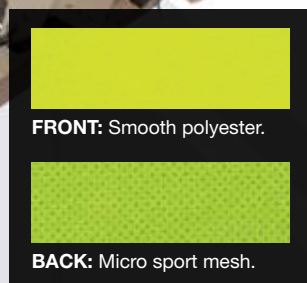
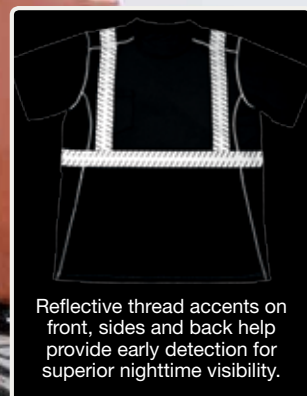
- SPF rated, extremely lightweight with exceptional breathability.
- Smooth polyester material on front with micro sport mesh on back.
- 2" wide high performance breathable reflective material.
- Brilliant Series Trim (reflective thread) down sides and around waist for added low light visibility.
- Black bottom front to keep t-shirt appearance clean and professional.
- Tagless neck label for extra comfort.

POCKETS

- Left chest pocket.

SIZES: M-5XL

ANSI/ISEA 107 Class 2 Compliant

**FRONT:** Smooth polyester.**BACK:** Micro sport mesh.

Reflective thread accents on front, sides and back help provide early detection for superior nighttime visibility.

9160

9120 Lime
9121 Orange**Flat Stitch Panels Class 2 T-Shirt****PERFORMANCE FEATURES**

- Microfiber polyester material wicks away moisture.
- 2" wide high performance reflective material on contrast panels.
- Flat stitched contrast panels improve daytime visibility and significantly improves comfort and coolness over layered contrasting panels.

POCKETS

- Left chest pocket.

SIZES: M-5X

ANSI/ISEA 107 Class 2 Compliant

9110 Lime
9111 Orange**Short Sleeve Class 2 T-Shirt – Economy****PERFORMANCE FEATURES**

- Microfiber polyester material wicks away moisture.
- 2" wide reflective material.

POCKETS

- Left chest pocket.

SIZES: M-5X

ANSI/ISEA 107 Class 2 Compliant

9122 Lime
9123 Orange9124 Lime
9125 Orange**Long/Short Sleeve T-Shirt – Economy****PERFORMANCE FEATURES**

- Microfiber polyester material wicks away moisture.
- Perfect for protecting your arms from the sun while staying cool.

POCKETS

- Left chest pocket.

SIZES: M-5X

Not ANSI/ISEA Compliant

9128 Lime
9127 Orange**100% Cotton T-Shirt****PERFORMANCE FEATURES**

- Lightweight and comfortable all 100% cotton construction.

POCKETS

- Left chest pocket on 9127 (Orange).
- No pocket on 9128 (Lime).

SIZES: S-3X (9127), M-5X (9128)

Not ANSI/ISEA Compliant

9118 Lime
9119 Orange**Short Sleeve Class 3 T-Shirt****PERFORMANCE FEATURES**

- Microfiber polyester material wicks away moisture.
- 2" wide high performance reflective material.

POCKETS

- Left chest pocket.

SIZES: M-5X

ANSI/ISEA 107 Class 3 Compliant

9145 Lime
9146 Orange**Long Sleeve Class 3 T-Shirt – Economy****PERFORMANCE FEATURES**

- Microfiber polyester material wicks away moisture.
- 2" wide reflective material.

POCKETS

- Left chest pocket.

SIZES: M-5X

ANSI/ISEA 107 Class 3 Compliant

Better accessories for better visibility.

2810



2810 Lime
2813 Orange

Hard Hat Sun Shield

PERFORMANCE FEATURES

- Keeps your neck well shaded.
- Elastic band to fit over most hard hats.
- Ultra-Cool™ 100% polyester mesh with contrasting trim.
- 5/8" wide high performance reflective material with contrasting material.



2808 Lime
2809 Orange

Hard Hat Nape Protector

PERFORMANCE FEATURES

- Protects your neck from the sun while wearing your hard hat.
- 100% polyester.
- Self-adhesive hook & loop tabs allow you to attach to the inside or outside of any hard hat.
- 2" wide high performance reflective material.



2808



2871

2-Tone Hard Hat Cover

PERFORMANCE FEATURES

- 100% polyester mesh.
- Elastic band to fit over many different hard hats.
- Built in hooks secure the cover to your hard hat.
- 1/2" wide high performance reflective material.

ANSI/ISEA 107 Headwear Compliant



2871 Lime/Orange



2826

Knit Beanie

PERFORMANCE FEATURES

- Soft 100% polyester knit material.
- Two stripes of reflective thread are woven into the beanie, allowing for greater flexibility over sewn on reflective tape.



2826 Lime
2827 Orange



2824

Full Brim Safari Hat

PERFORMANCE FEATURES

- 100% polyester material.
- Mesh around the crown of the head keeps you cool and ventilated.
- 1" wide reflective material with 2" contrasting color material 360 degrees around the hat.
- Dark grey under brim reduces glare.
- Reflective piping around brim and top of hat.
- Drawstring keeps the hat securely on your head.



2822 Lime (S-M)
2824 Lime (L-XL)

SIZES: S-M, L-XL

ANSI/ISEA 107 Headwear Compliant

2823 Orange (S-M)
2825 Orange (L-XL)



2855

Baseball Cap

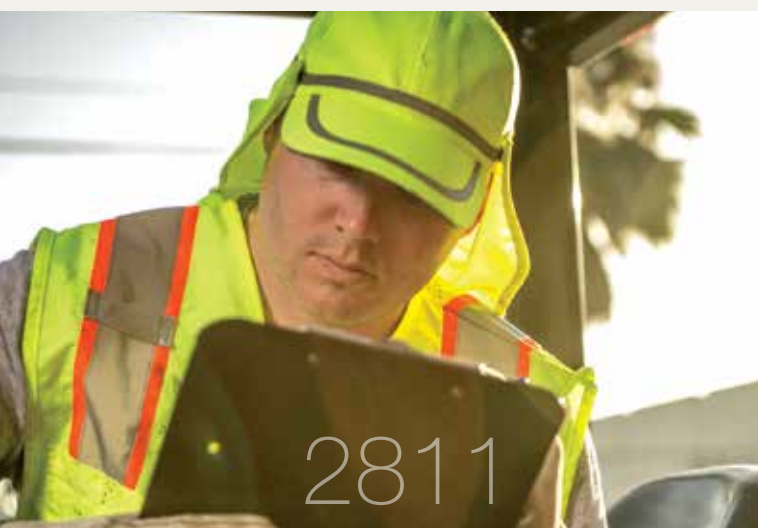
PERFORMANCE FEATURES

- Stylish high visibility baseball cap.
- 100% polyester material.
- 1/2" wide reflective material.
- Two mesh panels on cap for breathability and comfort.
- Dark grey under brim reduces glare.

ANSI/ISEA 107 Headwear Compliant



2854 Lime
2855 Orange



2811

Baseball Cap Sun Shield

PERFORMANCE FEATURES

- Snaps into place on left and right side of our baseball cap.
- Reflective material maintains 360 degree visibility around the cap.
- Secure hook & loop tab connects to back strap.
- Baseball cap (2854/2855) sold separately.



2811 Lime
2812 Orange



2816



2816 Lime

Multi-Wear Climate Shield

PERFORMANCE FEATURES

- Multiple configurations to fit any style or weather condition.
- Lightweight 100% polyester jersey knit material.
- Two 1" strips of reflective material ensure nighttime or low light visibility in any configuration.

SIZES: One size fits most.

See all the ways to wear at mlkishigo.com/climate-shield.html.



HAT LINER



BALACLAVA



NECK SHIELD



DOO-RAG



FACE GUARD



FOULARD



SAHARIANE



HAIR BAND

OPTIONS TO WEARING SHIELD



2873

Full Brim Sun Shield

PERFORMANCE FEATURES

- 100% polyester shade with breathable mesh nape protector.
- Designed to fit over full brim hard hats.
- Easy to fold and put away.
- Brilliant Trim reflective edging improves low light visibility.
- 1/2" reflective material with contrasting color.



2873 Lime
2874 Orange



3902

Single Stripe Seat Belt Covers

PERFORMANCE FEATURES

- High visibility seat belt covers make it easy to ensure your workers are practicing proper safety and are buckled up.
- 1" full length reflective material.
- Hook and loop closure.



3902 Lime
3903 Orange

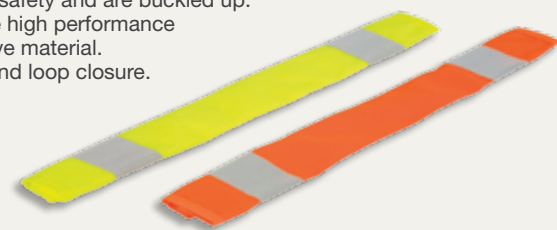


3901

Dual Stripe Seat Belt Covers

PERFORMANCE FEATURES

- High visibility seat belt covers make it easy to ensure your workers are practicing proper safety and are buckled up.
- 2" wide high performance reflective material.
- Hook and loop closure.



3901 Lime
3900 Orange



3881

Arm/Ankle Bands

PERFORMANCE FEATURES

- 2" wide elastic arm/ankle band for added visibility.
- Hook & loop adjustability.
- 5/8" wide reflective material.



3881 Lime
3882 Orange



3896

Reflective Waist Bands

PERFORMANCE FEATURES

- 2" wide prismatic reflective material belt.
- 2" wide glass bead reflective material on 3895.
- Adjustable up to 54".
- Plastic clasp closure.



3896 Lime
3897 Orange
3895 Silver



5963

Stop Signs

NON-REFLECTIVE

- A. 5950 STOP/SLOW & 5951 STOP/STOP (Not shown).
- 18" Screened hard board.
 - 9" Handle.
- B. 5965 STOP/STOP (Ultra lightweight)
- 18" Screened coroplast.
 - 9" Handle.
 - Ideal for crossing guards.

REFLECTIVE:

HIGH INTENSITY GRADE

- D. 5961 STOP/SLOW
- 18" Aluminum.
 - 12" Handle.
- E. 5963 STOP/SLOW
- 18" Aluminum.
 - 60" One piece handle.
 - 2 bolt (Assembly required).

REFLECTIVE:

ENGINEER GRADE

- C. 5960 STOP/SLOW
- 18" Aluminum.
 - 12" Handle.

Warning Flags

STANDARD WARNING FLAGS

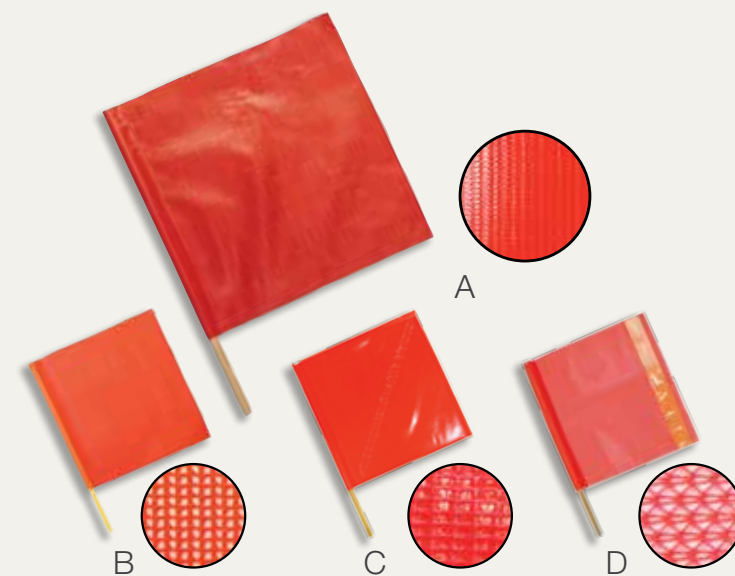
- A. 1600 VINYL
- 18" x 18" red/orange reinforce vinyl material.
 - 3/4" x 24" hardwood dowel.
- B. 1703 MESH
- 18" x 18" red/orange vinyl coated mesh.
 - 3/4" x 24" hardwood dowel.

VINYL FLAG W/ DIAGONAL STAY

- C. 1600S VINYL
- 18" x 18" red/orange vinyl coated material.
 - 3/4" x 24" hardwood dowel.
 - Diagonal stay keeps flag open.

HEAVY DUTY VINYL COATED MESH WITH ORANGE PRISMATIC TAPE

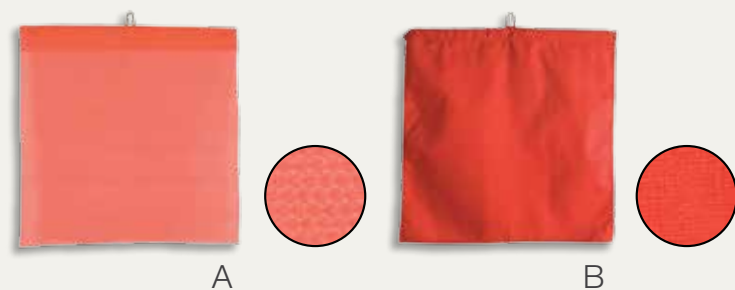
- D. 5988 W/PVC TRIM
- 18" x 18" red/orange 10 oz. vinyl coated mesh.
 - 3/4" x 24" hardwood dowel.
 - 2" wide orange prismatic reflective material.




Overhang Signs


STANDARD WARNING FLAGS

- A. D-5971 MESH
- 18" x 18" fluorescent red/orange 10 oz heavy duty vinyl coated mesh.
 - 12 gauge wire hanger.
- B. CI-5971
- 18" x 18" red lightweight cotton fabric.
 - 12 gauge wire hanger.






Left chest pocket with retractable clear ID holder & cell phone storage.



Hidden tablet pocket.



Durable ripstop material with seam sealed construction.



JS135

Leading the Way

The JS135 is the first of its kind.



Removable high quality zip up hoodie sweatshirt with design inspired reflective bands on the left arm.

Left arm cell phone pocket with waterproof zipper.

Two large integrated outside lower gusseted patch pockets.

Two side access hand warmer pockets with micro fleece lining.



Tape design allows for large logo area on back.

JS135 Lime

Premium
Black Series®

2 in 1 Jacket

- PERFORMANCE FEATURES**
- Durable ripstop material with waterproof seam sealed construction.
 - 2" wide high performance reflective material laminated directly to the fabric for longer life.
 - Zipper front closure with storm flap.
 - Removable zip up hoodie sweatshirt.
 - Black areas provide contrast, style, and durability.
 - Detachable rain hood can be stored in pocket.
 - Cuffs with durable rubber pull tabs make for easy adjustments while wearing gloves.
 - Ventilated cape back for additional comfort.
 - Reflective piping accents on back, sides, and pockets.
- POCKETS**
- Two outside lower gusseted pockets with hook & loop flaps.
 - Two outside lower side access pockets with fleece lining.
 - Left chest pocket with retractable clear ID holder.
 - Left arm cell phone pocket with waterproof zipper.
 - Inside lower left hidden tablet (iPad) pocket with zipper. Tablet pocket can be accessed without unzipping the jacket.
 - Traditional hoodie design with two side slash pockets.

SIZES: M-5X
ANSI/ISEA 107 Class 3 Compliant



Extra visibility in trim.

Reflective piping accents on back, sides, and pockets help provide early detection for nighttime visibility.



JS119 Lime
JS120 Orange
NEW
Updated Features*

Premium Brilliant Series®

Bomber Jacket

PERFORMANCE FEATURES

- Durable ripstop material with waterproof seam sealed construction.*
- Removable black quilted liner.
- Hidden collar hood.
- 2" wide 3M™ Scotchlite™ reflective material with 3" contrast.
- Brilliant Series reflective piping on collar, shoulders, hood and sleeve seams.
- Adjustable cuffs.
- Black bottom front & sleeves to keep a clean appearance.

POCKETS

- Left chest pocket with retractable clear ID holder.*
- Left bicep 2-division pencil/pen pocket.*
- Two outside lower slash pockets with zippers.
- Inside wallet pocket.

SIZES: M-5X

ANSI/ISEA 107 Class 3 Compliant



NEW
JS121 Lime

Economy Bomber Jacket

PERFORMANCE FEATURES

- Durable waterproof seam sealed shell with thermal insulation.
- 2" wide reflective material.
- Black bottom front & sleeves to keep a clean appearance.
- Adjustable cuffs.

POCKETS

- Left chest radio pocket to accommodate new larger cell phones.
- Two outside lower slash pockets.
- Right chest outside multi-use pocket with vertical zipper closure.

SIZES: M-5X

ANSI/ISEA 107 Class 3 Compliant



JS130 Lime
NEW
JS131 Orange

Ripstop Bomber Jacket

PERFORMANCE FEATURES

- Durable ripstop material with waterproof seam sealed construction and fleece body & hood.
- Hood fits into the collar or can be removed altogether.
- Quilted sleeves for easy arm in and out access.
- 2" wide high performance reflective material.
- Adjustable cuffs with rubber pulls for easy use when wearing gloves.
- Left and right mic tabs.

POCKETS

- Right chest vertical pocket for wallet or other accessories.
- Left chest radio pocket.
- Left and right outside slash pockets.
- Left bicep 2-division pencil/pen pocket with drainage grommets.
- Large vertical tablet (iPad) pocket with zipper inside storm flap. Tablet can also be accessed without unzipping the jacket.

SIZES: M-5X

ANSI/ISEA 107 Class 3 Compliant



Hidden tablet pocket.



2-division pencil pocket.



High Visibility ripstop material.



Hidden tablet pocket.



2-division pencil pocket.



High Visibility ripstop material.



JS140

**NEW**
JS140 Lime**Premium
Black Series®****Parka****PERFORMANCE FEATURES**

- Durable ripstop material with waterproof seam sealed construction.
- Quilted liner with thermal insulation.
- 2" wide high performance reflective material.
- Zipper front closure with storm flap.
- Storm cuff (powder barrier) waist liner keeps wind and snow out of critical areas.
- Black areas provide contrast, style, and durability.
- Cuffs with durable rubber pull tabs make for easy adjustments while wearing gloves.
- Detachable lined hood can be stored in pocket.
- Reflective piping accents on back, sides, and pockets.

POCKETS

- Two outside lower gusseted pockets with hook & loop flaps.
- Two outside lower side access pockets with microfleece lining.
- Left chest pocket with retractable clear ID holder.
- Left bicep 2-division pencil pocket.
- Inside lower left hidden tablet (iPad) pocket with zipper. Tablet pocket can be accessed without unzipping the jacket.

SIZES: M-5X

ANSI/ISEA 107 Class 3 Compliant

JS110 Lime
JS111 Orange**360 Pro Series
Parka****PERFORMANCE FEATURES**

- Reflexite® reflective tape performs exceptionally well under wet conditions and provides additional durability compared to silver glass beaded reflective materials.
- Waterproof seam sealed construction.
- Thermal insulation.
- Hidden collar hood.
- Adjustable cuffs.
- Storm cuff (powder barrier) waist and sleeve liners keep wind and snow out of critical areas.
- 6" side zipper for added comfort when sitting and provides improved airflow.
- Black lower body and sleeves help the wearer keep a clean appearance.

POCKETS

- Two outside lower slash pockets with zippers and storm flaps.
- Outside left chest radio pocket.
- Hidden wallet pocket inside front closure storm flap.
- Inside general use pocket.

SIZES: M-5X

ANSI/ISEA 107 Class 3 Compliant

JS102 Lime
JS103 Orange**Hoodie Sweatshirt with Zipper****PERFORMANCE FEATURES**

- Black lower body and sleeves help the wearer keep a clean appearance.
- High quality 9 oz. polyester sweatshirt material.
- Black rib knit cuffing.
- 2" wide high performance reflective material.

POCKETS

- Lower outside slash pockets.

SIZES: M-5X

ANSI/ISEA 107 Class 3 Compliant

WB100 Lime
WB101 Orange**Premium
Black Series®****Windbreaker****PERFORMANCE FEATURES**

- Lightweight 100% polyester and flexible design.
- Durable black ripstop material in high wear areas, along the sides and under the arms.
- Waist cinches hidden in front pockets.
- Adjustable cuffs.
- Shoulder blade vents.
- 2" wide high performance reflective material.

POCKETS

- Two outside lower pockets with zippers.
- Left chest vertical pocket with waterproof zipper.

SIZES: M-5X

ANSI/ISEA 107 Class 3 Compliant

Stay Visible.
Stay Dry.

In rain or shine,
you'll get the job done.



Extra visibility in trim.

RWJ106



RWJ106 Lime
RWJ107 Orange

Premium
Black Series®

Rainwear

PERFORMANCE FEATURES

- Waterproof breathable material with durable seam sealed construction.
- Black bottom and accents for a mix of functionality and style.
- Reflective trim improves reflectivity all the way around the garment.
- 2" wide Reflexite® reflective material performs exceptionally well under wet conditions.
- Waterproof front zipper.
- Adjustable wrist cuffs.
- Ventilated back and armpits.
- Reinforced D-ring access on back.

POCKETS

- Vertical left chest pocket with waterproof zipper.
- Lower front slash pockets with waterproof zipper.
- Left arm cell phone pocket with storm flap and zipper closure.

SIZES: S-M, L-XL, 2X-3X, 4X-5X
ANSI/ISEA 107 Class 3 Compliant

Rainwear Pants

PERFORMANCE FEATURES

- Reflective trim down the outside of the legs for enhanced low light visibility.
- Adjustable leg cuff straps.
- Zipper cuff for boot access.

POCKETS

- Large left and right side gusseted cargo pockets with reflective trim.

SIZES: S-M, L-XL, 2X-3X, 4X-5X
ANSI/ISEA 107 Class E Compliant

Rainwear Bib

PERFORMANCE FEATURES

- Same as pants, plus:
- High quality elastic suspenders with quick release buckle.
 - Large chest patch pocket with zipper/storm flap.
 - Right side cargo pocket, grommets at the bottom of cargo pocket for water drainage.

SIZES: S-M, L-XL, 2X-3X, 4X-5X
ANSI/ISEA 107 Class E Compliant



Black bottom and accents for style and clean appearance in dirty conditions.



RWP106 Lime
RWP107 Orange

RWB106 Lime
RWB107 Orange

The material you need with the features you want.



Premium Brilliant Series®

Rainwear

PERFORMANCE FEATURES

- Waterproof material with durable seam sealed construction.
- Black bottom and accents for a mix of functionality and style.
- Brilliant Series reflective piping improves reflectivity all the way around the garment.
- 2" wide Reflexite® reflective material performs exceptionally well under wet conditions.
- Waterproof front zipper.
- Adjustable wrist cuffs.
- Ventilated back and armpits.

POCKETS

- Hidden left chest pocket with zipper and retractable clear ID holder.
- Two outside lower slash pockets with waterproof zipper.
- Inside lower left hidden tablet (iPad) pocket with zipper.

PANTS

- Waterproof material with seam sealed construction.
- Elastic waist with drawstring.
- Black material on knees to keep a clean appearance.
- 2" wide Reflexite® reflective material performs exceptionally well under wet conditions.
- Adjustable bottom cuff with zipper for easy boot access.
- Pockets: Left and right side pockets with zipper closure.

SIZES: S-M, L-XL, 2X-3X, 4X-5X

ANSI/ISEA 107 Class 3 Compliant - Jacket
ANSI/ISEA 107 Class E Compliant - Pants



Storm Stopper Pro Rainwear

PERFORMANCE FEATURES

- Reflexite® prismatic reflective tape performs exceptionally well under wet conditions, and provides additional durability over silver glass beaded reflective materials.
- Waterproof material with seam sealed construction keeps the wearer warm and dry.
- Zipper/storm flap closure for weather protection.
- Black lower body and sleeves help keep the wearer's appearance neat and clean.
- Vented cape back for additional breathability.
- Hidden collar hood.
- Adjustable wrist and ankle cuffs.
- Mesh liner.
- D-ring access on back.

POCKETS

- Two outside pockets with storm flaps and snaps.
- Left chest radio pocket.

PANTS

- Adjustable leg cuff straps.

SIZES: S-M, L-XL, 2X-3X, 4X-5X

ANSI/ISEA 107 Class 3 Compliant - Jacket
ANSI/ISEA 107 Class E Compliant - Pants

Premium Brilliant Series®

Long Rain Coat

PERFORMANCE FEATURES

- Waterproof material with durable seam sealed construction.
- 2" wide high performance reflective material.
- Brilliant Series reflective piping on shoulders, hood and sleeve seams.
- Zipper/storm flap closure for weather protection.
- Non-sparking snaps and zipper.
- Adjustable wrist cuffs.
- Black lower body and sleeves help keep the wearer's appearance neat and clean.

POCKETS

- Lower front patch pockets with flaps.

SIZES: S-M, L-XL, 2X-3X, 4X-5X

ANSI/ISEA 107 Class 3 Compliant





RWJ102



RWJ102 Lime
RWJ103 Orange

RWP102 Lime
RWP103 Orange

Storm Cover Rainwear

PERFORMANCE FEATURES

- Waterproof material with durable seam sealed construction.
- 2" wide high performance reflective material.
- Zipper/storm flap closure for weather protection.
- Non-sparking snaps and zipper.
- Adjustable wrist cuffs.
- Mesh liner.

POCKETS

- Lower front patch pockets with snap closure.
- Left chest radio pocket.

PANTS

- Adjustable leg cuff straps.

SIZES: S-M, L-XL, 2X-3X, 4X-5X

ANSI/ISEA 107 Class 3 Compliant - Jacket
ANSI/ISEA 107 Class E Compliant - Pant



9665J Lime

9665P Lime

Storm Stopper Rainwear

PERFORMANCE FEATURES

- Waterproof material with durable seam sealed construction.
- 2" wide high performance reflective material.
- Zipper/storm flap closure.
- Non-sparking snaps and zipper.
- Fully vented cape back for breathability.
- Adjustable wrist cuffs.
- Mesh liner.

POCKETS

- Patch pockets with snap closure.

BIB

- High quality elastic suspenders with quick release buckle.
- Adjustable leg cuff straps.
- Front fly with snap closure.

SIZES: S-M, L-XL, 2X-3X, 4X-5X

ANSI/ISEA 107 Class 3 Compliant - Jacket
ANSI/ISEA 107 Class E Compliant - Bib



RW110 Lime
RW111 Orange

Rainwear Set – Economy

Full rainsuit only. No separates.

PERFORMANCE FEATURES

- Waterproof material with durable seam sealed construction.
- 2" wide reflective material.
- Zipper/storm flap closure.
- Non-sparking snaps and zipper.
- Adjustable wrist cuffs.

POCKETS

- Lower front patch pockets with flaps.

PANTS

- Adjustable leg cuff straps.

SIZES: S-M, L-XL, 2X-3X, 4X-5X

ANSI/ISEA 107 Class 3 Compliant - Jacket
ANSI/ISEA 107 Class E Compliant - Pants

FLAME RESISTANT

ML KISHIGO®

FR Ready

Flame Resistant gear to keep you seen, safe, and comfortable.

F406



F406 Lime



FLAME RESISTANT
**Premium
Black Series®**

FR Long Sleeve T-Shirt

PERFORMANCE FEATURES

- Lightweight modacrylic/cotton Flame Resistant interlock knit material.
- 2" wide high performance breathable reflective material greatly reduces hot spots and provides greater flexibility over solid tapes.
- Dark Flame Resistant sides add a sporty look and visual contrast.

POCKETS

- Left chest pocket.

SIZES: M-5X

NFPA 70E-2012 | ASTM F1506 | ARC 2
Arc Rating/ATPV: 8.6 cal/cm²

ANSI/ISEA 107 Class 3 Compliant



NEW

F462 Lime



FR Long Sleeve T-Shirt – *Economy*

PERFORMANCE FEATURES

- Lightweight modacrylic/cotton Flame Resistant interlock knit material.
- 2" wide laminated reflective material.

POCKETS

- Left chest pocket.

SIZES: M-5X

NFPA 70E-2012 | ASTM F1506 | ARC 2
Arc Rating/ATPV: 8.6 cal/cm²

ANSI/ISEA 107 Class 3 Compliant

FR Gear with style and function.



FR Pro Series Vest

PERFORMANCE FEATURES

- Modacrylic blend Flame Resistant solid or GlenGuard™ mesh material.
- FR hook & loop front closure.
- 2" wide Flame Resistant Reflexite® reflective material with 3" contrasting color.

POCKETS

- Two inside lower patch pockets.
- One outside left chest 2-tier, 3-division pencil pocket.
- One outside right chest storage pocket.

SIZES: M-5X

NFPA 70E-2012 | ASTM F1506 | ARC 1
Arc Rating/ATPV: Solid=5.5cal/cm² | Mesh: 5.1cal/cm²

ANSI/ISEA 107 Class 2 Compliant 2 - 4 week lead time



FR Pro Series Vest

PERFORMANCE FEATURES

- Modacrylic blend Flame Resistant solid or GlenGuard™ mesh material.
- FR hook & loop front closure.
- 2" wide Flame Resistant Reflexite® reflective material with 3" contrasting color.

POCKETS

- Two inside lower patch pockets.
- One outside left chest 2-tier, 3-division pencil pocket.
- One outside right chest storage pocket.

SIZES: M-5X

NFPA 70E-2012 | ASTM F1506 | ARC 1
Arc Rating/ATPV: Solid=5.5cal/cm² | Mesh: 5.1cal/cm²

ANSI/ISEA 107 Class 3 Compliant 2 - 4 week lead time



FLAME RESISTANT Premium Black Series®

FR Mesh Vest

PERFORMANCE FEATURES

- Modacrylic blend Flame Resistant GlenGuard™ mesh material.
- 2" wide high performance breathable reflective material greatly reduces hot spots.
- Indura® FR black bottom and trim helps keep the vest clean and enhance worker's appearance.
- Nomex® high temp FR zipper.
- FR reflective piping.
- Optional D-Ring access also available (Part # FM410D - Allow 1-2 weeks lead time).

POCKETS

- Two lower inside patch pockets.
- Left chest inside 2-tier, 4-division pencil pocket.

SIZES: M-5X

NFPA 70E-2012 | ASTM F1506 | ARC 1
Arc Rating/ATPV: 5.1 cal/cm²

ANSI/ISEA 107 Class 2 Compliant



GlenGuard™ Hi-Vis is a registered trademark of Glen Raven, Inc.



FR Breathable Mesh Vest

PERFORMANCE FEATURES

- Modacrylic blend Flame Resistant GlenGuard™ mesh material.
- 2" wide high performance breathable reflective material.
- Flame Resistant hook & loop front closure.

POCKETS

- Two lower inside patch pockets.
- Left chest inside 2-tier, 4-division pocket.

SIZES: M-5X

NFPA 70E-2012 | ASTM F1506 | ARC 1
Arc Rating/ATPV: 5.1 cal/cm²

ANSI/ISEA 107 Class 2 Compliant



FR Classic Vest

PERFORMANCE FEATURES

- Modacrylic blend Flame Resistant solid or GlenGuard™ mesh material.
- FR hook & loop front closure.
- 2" wide Flame Resistant Reflexite® reflective material.

POCKETS

- Two inside lower patch pockets.
- One inside upper left 2-tier, 4-division pencil pocket.

SIZES: M-5X

NFPA 70E-2012 | ASTM F1506 | ARC 1
Arc Rating/ATPV: Solid = 5.5 cal/cm² | Mesh = 5.1 cal/cm²

ANSI/ISEA 107 Class 2 Compliant

Reflexite®

FM410



F442 Lime



FR Economy Vest

PERFORMANCE FEATURES

- Modacrylic blend Flame Resistant solid material.
- FR hook and loop front closure.
- 2" wide laminated reflective material.

POCKETS

- Two lower inside patch pockets.
- One inside left chest 2-tier, 4-division pencil pocket.

SIZES: M-5X

NFPA 70E-2012 | ASTM F1506 | ARC 1
Arc Rating/ATPV: 6.7 cal/cm²

ANSI/ISEA 107 Class 2 Compliant



FM419 Lime
FM420 Orange

Chemically Treated Mesh Vest

PERFORMANCE FEATURES

- Chemically treated Ultra-Cool™ 100% polyester mesh material.
- Non-sparking zipper front closure.
- 2" wide reflective material.

POCKETS

- Outside left chest radio pocket with hook & loop tab.
- Inside right chest 2-tier, 4-division pencil pocket.
- Two lower inside patch pockets.

SIZES: M-5X

ANSI/ISEA 107 Class 2 Compliant

Does not meet ANSI FR Requirements
Test Method: D6413/Less than 2 seconds after flame,
less than 6" char length.



F2802 Lime
F2803 Orange



FR Hard Hat Nape Protector

PERFORMANCE FEATURES

- Modacrylic blend Flame Resistant solid material.
- Protects your neck and shoulders from the sun.
- Self-adhesive hook and loop tabs allow you to attach to the inside or outside of any hard hat.
- 2" wide Flame Resistant Reflexite® reflective material.

Arc Rating/ATPV: 5.5 cal/cm²



F2800 Lime
F2801 Orange
FM2800 Lime Mesh



FR Hard Hat Sun Shield

PERFORMANCE FEATURES

- Modacrylic blend Flame Resistant solid or GlenGuard™ mesh material.
- 2" wide Flame Resistant Reflexite® reflective material.

Arc Rating/ATPV: Solid=5.5cal/cm² | Mesh: 5.1cal/cm²



F407 Lime



FLAME RESISTANT
Premium
Black Series®

FR Hoodie

PERFORMANCE FEATURES

- 10.5 oz Modacrylic blend Flame Resistant sweatshirt material with extremely soft fleece-like inner texture.
- Black bottom enhances worker's appearance.
- Nomex® high temp FR zipper front closure.
- 2" wide breathable reflective material provides flexibility and comfort.

POCKETS

- Two outside lower slash pockets.

SIZES: M-5X

NFPA 70E-2012 | ASTM F1506 | ARC 2
Arc Rating/ATPV: 11.3 cal/cm²

ANSI/ISEA 107 Class 3 Compliant



F407



400 PSV

- PERFORMANCE FEATURES**
- Lightweight solid polyester front with Ultra-Cool™ mesh shoulders and back.
 - 5-point breakaway on 4003BV.
 - 4-point breakaway on 4001BZ and 4007BZ.
 - 4-season adjustability allows for accurate sizing in any weather, even over bulky coats.
 - Two 1" wide high performance reflective material with contrast.
 - Brilliant Trim reflective edging improves low light visibility.
 - Convenient left mic tab holder.
 - Handy left chest badge holder & right chest name tag holder.

- POCKETS**
- Left chest pencil/pen pocket.
 - Inside large lower patch pocket (when not in use, the vest folds into convenient storage pouch).

SIZES: M-XL, 2X-4X
ANSI/ISEA 207 Compliant



4003BV
Lime/Red (Fire)



4001BZ
Lime/Black (Police)



4007BZ
Lime/Black (Security)



200 PSV

- PERFORMANCE FEATURES**
- Upper mesh and lower solid polyester material.
 - 5-point breakaway on 8052BV.
 - 4-point breakaway on 8051BZ, 8054BZ, and 8055BZ.
 - Two 1" wide high performance reflective material with 4 1/2" lime contrast.
 - 4-season adjustability allows for accurate sizing in any weather, even over bulky coats.
 - Convenient left chest mic tab holder.

- POCKETS**
- Left chest pencil/pen pocket.
 - Inside large lower patch pocket (when not in use, the vest folds into convenient storage pouch).

SIZES: M-XL, 2X-4X
ANSI/ISEA 207 Compliant



8051BZ
Lime/Blue (Police)



8052BV
Lime/Red (Fire)



8055BZ
Lime/Black (Security)



8054BZ
Lime/Brown (Sheriff)



Best Visibility
400 PSV

Good Visibility
200 PSV

Our 400 PSV and 200 PSV standouts.



All Season Adjustability
Accommodates thin to bulky wear.



Built-in Vest Storage Pouch
Conveniently folds away when not in use.



Breakaway Panels
Quick release panels in case of machinery grabs.

3700 Series Incident Command Vest

PERFORMANCE FEATURES

- 100% polyester fabric with matching color trim.
- Hook & loop front closure.
- White 1" wide reflective material (White vest uses lime reflective material).
- Clear plastic card holder for standard, holds 4.25" x 11" (back) and 3" x 5" card (front) - (Laminated inserts sold separately, or print your own).

POCKETS

- (A) Upper right chest pocket with pencil/pen division (5" wide x 5" tall).
- (B) Inside lower right patch pocket (5.5" wide x 5.75" tall).

ONE SIZE FITS MOST

Not ANSI/ISEA Compliant

3705i Green

3710i Yellow

3702i Black

3706i Tan

3703i Dark Blue

3712i Fluorescent Orange

3713i Fluorescent Yellow

3711i White

3707i International Orange

3709i Light Blue

3704i Royal Blue

4700 Series Incident Command Vest

PERFORMANCE FEATURES

- Poly/cotton fabric with matching color trim.
- Hook & loop front closure.
- 5/8" wide reflective stripes with 2" contrasting material.
- Clear plastic card holder for standard, holds 4.25" x 11" (back) and 3" x 5" card (front) - (Laminated inserts sold separately, or print your own).
- Minimum 10-piece order.

POCKETS

- (A) Lower right pocket with one division (9.5" wide x 8.5" tall overall).
- (B) Lower left inside large notebook/flashlight pocket (10.25" wide x 9.5" tall overall).

SIZES: S-5X

Not ANSI/ISEA Compliant 2 - 4 week lead time

4705 Green

4709 Light Blue

4711 White

4712 Fluorescent Orange

4713 Fluorescent Yellow

4702 Black

4706 Tan

4707 International Orange

4703 Dark Blue

4710 Yellow

4704 Royal Blue

Custom printing.

Need something custom for your company?

We have an in-house graphic design and screen print facility that specializes in traditional screen printing, reflective graphic transfers, and die-cut numbers and letters (reflective and non reflective). We're experts at determining the best application for your specific fabric. Our imprint technicians test and retest to ensure your garments receive the right temperature requirements eliminating shrinkage, unusual rippling of the tape, or other challenges that may distort your garments. We also have a steadfast knowledge of expensive Fire Resistant fabrics and can ensure your garment gets done correctly the first time. No guess work from the experts. Need it fast? We can even ship it within 48 hours.*

*Some limitations apply, please contact your customer service rep for further details.



Horizontal Sample (1516/1515)



Vertical Sample (1514/1513)



Designed in the U.S.A.

At ML Kishigo, we pride ourselves on being a company who listens to the customers. It's the feedback of hardworking men and women around the country that sparks innovation and why we strive to continually manufacture quality products. All of our designs come from a team right here in the USA. Each and every one of us is committed to providing you with quality high visibility gear that you can wear every day without fail. From all of us here in Santa Ana, California, we're proud to support hardworking Americans just like you.



OUR VISION

Our dedication to safety is reflected in
our uncompromising commitment to
quality, innovation, and comfort.

We ensure every thread, seam, and
product holds up to these standards to
keep you safe and comfortable.

While you're committed to your job,
we're committed to you.



ML KISHIGO®

MLKISHIGO.COM

2901 S. DAIMLER ST.
SANTA ANA, CA 92705

800.338.9480