



1-1/4" BRANCH TAILPIECES, HOSE & CLAMP, THREADED TOP TECHNICAL SPECIFICATION

| | |
|----------------------|------------------|
| Job Name _____ | Item # _____ |
| Location _____ | |
| Engineer _____ | Contractor _____ |
| PO # _____ | Tag _____ |
| Representative _____ | |

SPECIFICATIONS

Dearborn Brass 1-1/2" Brass Tubular Branch Tailpieces With Hose & Clamp are designed for use in tubular drain applications.

DESCRIPTION

- Chrome Finish
- Branch Tailpiece with Hose & Clamp Connection
 - (1) Branch Tailpiece

APPROVALS AND LISTINGS



PRODUCT SELECTOR

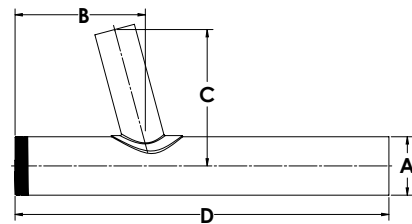
1-1/4" BRANCH TAILPIECES, HOSE & CLAMP, THREADED TOP

| ✓ | Product Number | Size | Description | Carton Quantity |
|---|----------------|-------------|--|-----------------|
| | 817TB-1 | 1-1/4" x 8" | Branch Tailpiece, Hose & Clamp, Threaded Top - 20 Ga., 7/8" Branch | 10 |

Data is subject to manufacturing tolerances.

DIMENSIONS

| | | | | | |
|------|------------|---------------|------|----------|---------------|
| [A]: | Diameter A | 1.5" | [F]: | Height C | 3.11" |
| [B]: | Length B | See Chart A.1 | [G]: | Length D | See Chart A.2 |



Access BIM/Revit content through www.oatey.com